

EXTERNAL PUBLIC DEBT OF CARICOM MEMBER STATES

1990 - 2000



CARIBBEAN COMMUNITY (CARICOM) SECRETARIAT
GEORGETOWN, GUYANA

EXTERNAL PUBLIC DEBT OF CARICOM MEMBER STATES 1990 - 2000

PREPARED AND COMPILED BY:

STATISTICS SUB-PROGRAMME
INFORMATION AND COMMUNICATION PROGRAMME
CARIBBEAN COMMUNITY (CARICOM) SECRETARIAT
GEORGETOWN, GUYANA
PO BOX 10827

JUNE 2002

Web Page - <http://www.caricom.org>
Email stats1@caricom.org
stats2@caricom.org

ISBN 976-600-150-2

Copyright © CARICOM Secretariat, 2002
All rights reserved

PREFACE

*This first issue of the **External Public Debt of CARICOM Member States**, provides data for the period 1990-2000, for twelve CARICOM Member States, namely: Antigua and Barbuda, The Bahamas, Belize, Dominica, Grenada, Guyana, Jamaica, Montserrat, St. Kitts and Nevis, Saint Lucia, St. Vincent and the Grenadines, and Trinidad and Tobago. Data were previously published in a combined volume of External Public Debt and Balance of Payments for the period 1980 –1996. In this report data for Barbados and Suriname were not available for inclusion. Therefore the CARICOM totals exclude these countries. Data for The Bahamas are presented in a new series for 1991 – 2000 which therefore implies that data for 1990 were not revised.*

The report presents, in one volume, ratios and indicators related to External Public Debt of CARICOM Member States which users frequently request from the Secretariat.

The report is divided into two (2) parts. It provides data on External Public Debt at both the regional level and details at the level of Member States. The report also presents data highlights on the overall debt situation of CARICOM excluding Barbados and Suriname as well as for individual Member States.

The data presented in the report were collected mainly from the Eastern Caribbean Central Bank (ECCB), the Central Banks of The Bahamas, Belize, Guyana, and Trinidad and Tobago, the Ministry of Finance in Jamaica and the Statistical Offices in the Organisation of Eastern Caribbean States (OECS) sub-region.

The Statistics Sub-Programme welcomes suggestions or comments that would help to improve subsequent issues of this report.

STATISTICS SUB-PROGRAMME
INFORMATION AND COMMUNICATION PROGRAMME
CARIBBEAN COMMUNITY (CARICOM) SECRETARIAT

JUNE 2002

ACKNOWLEDGEMENTS

The CARICOM Secretariat thanks the ECCB; the Central Banks of Barbados, The Bahamas, Belize, Guyana and Trinidad and Tobago; the Ministry of Finance, Jamaica; and the Statistics Departments in Member States for supplying the data used to compile the report.

The Secretariat also thanks the staff of its Statistics Sub-Programme for compiling and preparing the report.

SYMBOLS AND ABBREVIATIONS

The interpretation of symbols and abbreviations used in this report is as follows:

...	Data not available or not separately recorded
-	Magnitude zero
0	Magnitude less than US\$0.1 million
- -	Data not meaningful
p	Provisional data
MDCs	More Developed Countries
LDCs	Less Developed Countries
OECS	Organisation of Eastern Caribbean States
ECCB	Eastern Caribbean Central Bank
SDR	Special Drawing Rights
GDP	Gross Domestic Product

SOURCES OF DATA

National Statistical Offices of Member States

The Central Bank of The Bahamas

The Central Bank of Belize

The Central Bank of Trinidad and Tobago

The Bank of Guyana

The Eastern Caribbean Central Bank

The Ministry of Finance, Jamaica

GENERAL NOTES

1. Mid-Year Estimates have been revised compared to those published previously in our National Accounts Digest, 1990 – 1999.
2. Estimates of Gross Domestic Product at Market Prices (GDP at MP) have been revised compared to those published previously in our National Accounts Digest, 1990 – 1999.
3. Growth rates are shown from 1991, since the revised data series covers 1990 – 2000.
4. For Montserrat, External Debt for the entire period has been from Official and Multilateral Creditors. Therefore, the table on Montserrat External Debt by Creditors is not shown.
5. Differences between the Total Debt figures in the Summary tables and Creditors tables are due to rounding. In general, figures may not add up or calculations may not be exact due to rounding.
6. Figures in this report may differ from those in other publications because of an earlier cut off period of data collection, after which there may have been revisions to the data.

CONTENTS

TABLE NO	PAGE
PREFACE	iii
ACKNOWLEDGEMENTS	v
SYMBOLS AND ABBREVIATIONS	vii
SOURCES OF DATA	vii
GENERAL NOTES	viii
EXPLANATORY NOTES AND DEFINITIONS	xiii
EXCHANGE RATES	xv
DATA HIGHLIGHTS	3

PART 1

CARICOM: EXTERNAL PUBLIC DEBT- AGGREGATES AND INDICATORS, 1990 –2000.

1.1	CARICOM: Disbursed External Public Debt Outstanding.....	9
1.2	CARICOM: Debt Service Payments on its External Public Debt.....	10
1.3	CARICOM: Growth of External Public Debt	11
1.4	CARICOM: Disbursed Debt Outstanding as a Percentage of its GDP at Market Prices	12
1.5	CARICOM: Disbursed Debt Outstanding as a Percentage of its Exports of Goods and Services (XGS)	13
1.6	CARICOM: Debt Service Ratio	14
1.7	CARICOM: Debt Service Payments as a Percentage of its GDP at Market Prices	15
1.8	CARICOM: Per Capita Disbursed External Public Debt Outstanding	16
1.9	CARICOM: Gross Domestic Product at Market Prices.	17
1.10	CARICOM: Exports of Goods and Services	18
1.11	CARICOM Mid-Year Population Estimates.....	19

PART 2:

**EXTERNAL PUBLIC DEBT- AGGREGATES AND INDICATORS,
BY MEMBER STATE, 1990 –2000.**

2.1	Antigua and Barbuda: Summary of External Public Debt Operations	23
2.2	Antigua and Barbuda: External Public Debt by Creditors	24
2.2b	Antigua and Barbuda: External Public Debt by Creditors (Percentage Distribution)	24
3.1	The Bahamas: Summary of External Public Debt Operations	26
3.2	The Bahamas: External Public Debt by Creditors	26
3.2b	The Bahamas: External Public Debt by Creditors (Percentage Distribution)	27
4.1	Belize: Summary of External Public Debt Operations	29
4.2	Belize: External Public Debt by Creditors	30
4.2b	Belize: External Public Debt by Creditors (Percentage Distribution).....	30
5.1	Dominica: Summary of External Public Debt Operations	32
5.2	Dominica: External Public Debt by Creditors	33
5.2b	Dominica: External Public Debt by Creditors (Percentage Distribution)	33
6.1	Grenada: Summary of External Public Debt Operations	35
6.2	Grenada: External Public Debt by Creditors	36
6.2b	Grenada: External Public Debt by Creditors (Percentage Distribution)	36
7.1	Guyana: Summary of External Public Debt Operations	38
7.2	Guyana: External Public Debt by Creditors	39
7.2b	Guyana: External Public Debt by Creditors (Percentage Distribution)	39
8.1	Jamaica: Summary of External Public Debt Operations	41
8.2	Jamaica: External Public Debt by Creditors	42
8.2b	Jamaica: External Public Debt by Creditors (Percentage Distribution)	42
9.1	Montserrat: Summary of External Public Debt Operations	44
10.1	St. Kitts and Nevis: Summary of External Public Debt Operations	46
10.2	St. Kitts and Nevis: External Public Debt by Creditors	47
10.2b	St. Kitts and Nevis: External Public Debt by Creditors (Percentage Distribution)	47
11.1	Saint Lucia: Summary of External Public Debt Operations	49
11.2	Saint Lucia: External Public Debt by Creditors	50
11.2b	Saint Lucia: External Public Debt by Creditors (Percentage Distribution)	50
12.1	St. Vincent and the Grenadines: Summary of External Public Debt Operations	52

12.2	St. Vincent and the Grenadines: External Public Debt by Creditors	53
12.2b	St. Vincent and the Grenadines: External Public Debt by Creditors (Percentage Distribution)	53
13.1	Trinidad and Tobago: Summary of External Public Debt Operations	55
13.2	Trinidad and Tobago: External Public Debt by Creditors	56
13.2b	Trinidad and Tobago: External Public Debt by Creditors (Percentage Distribution)	56

GRAPHS

GRAPH NO:	PAGE
1.1	CARICOM, MDCs and LDCs: Disbursed External Public Debt Outstanding 9
1.2	CARICOM, MDCs and LDCs: Debt Service Payments on its External Public Debt 10
1.3	CARICOM, MDCs and LDCs: Growth of External Public Debt Outstanding 11
1.4	CARICOM, MDCs and LDCs External Public Debt Outstanding as a Percentage of GDP at Market Prices 12
1.5	CARICOM, MDCs and LDCs External Public Debt Outstanding as a Percentage of its XGS 13
1.6	CARICOM, MDCs and LDCs Debt Service Ratios 14
1.6	CARICOM, MDCs and LDCs: Debt Service Payments as a Percentage of its GDP 15
1.8	CARICOM, MDCs and LDCs: Per Capita Disbursed External Public Debt Outstanding 16
1.9	CARICOM, MDCs and LDCs: GDP at Market Price 17
2.1	Antigua and Barbuda: Disbursed Debt Outstanding as a Percentage of its XGS and GDP..... 25
2.2	Antigua and Barbuda: Debt Service Payments as a Percentage of its XGS and GDP 25
3.1	The Bahamas: Disbursed Debt Outstanding as a Percentage of its XGS and GDP..... 28
3.2	The Bahamas: Debt Service Payments as a Percentage of its XGS and GDP..... 28
4.1	Belize: Disbursed Debt Outstanding as a Percentage of its XGS and GDP..... 31
4.2	Belize: Debt Service Payments As a Percentage of its XGS and GDP..... 31

5.1	Dominica: Disbursed Debt Outstanding as a Percentage of its XGS and GDP.....	34
5.2	Dominica: Debt Service Payments As a Percentage of its XGS and GDP.....	34
6.1	Grenada: Disbursed Debt Outstanding as a Percentage of its XGS and GDP.....	37
6.2	Grenada: Debt Service Payments as a Percentage of its XGS and GDP.....	37
7.1	Guyana: Disbursed Debt Outstanding as a Percentage of its XGS and GDP.....	40
7.2	Guyana: Debt Service Payments as a Percentage of its XGS and GDP.....	40
8.1	Jamaica: Disbursed Debt Outstanding as a Percentage of its XGS and GDP	43
8.2	Jamaica: Debt Service Payments As a Percentage of its XGS and GDP.....	43
9.1	Montserrat: Disbursed Debt Outstanding as a Percentage of its XGS and GDP	45
9.2	Montserrat: Debt Service Payments as a Percentage of its XGS and GDP.....	45
10.1	St. Kitts and Nevis: Disbursed Debt Outstanding as a Percentage of its XGS and GDP.....	48
10.2	St. Kitts and Nevis: Debt Service Payments As a Percentage of its XGS and GDP.....	48
11.1	Saint Lucia: Disbursed Debt Outstanding as a Percentage of its XGS and GDP.....	51
11.2	Saint Lucia: Debt Service Payments as a Percentage of its XGS and GDP	51
12.1	St. Vincent and the Grenadines Disbursed Debt Outstanding as a Percentage Of its XGS and GDP:	54
12.2	St. Vincent and the Grenadines: Debt Service Payments as a Percentage Of its XGS and GDP.....	54
13.1	Trinidad and Tobago: Disbursed Debt Outstanding as a Percentage Of its XGS and GDP:	57
13.2	Trinidad and Tobago: Debt Service Payments as a Percentage Of its XGS and GDP.....	57

EXPLANATORY NOTES AND DEFINITIONS

External Public Debt is defined as debt owed to non-residents of a country by its national Government, Government agencies and autonomous public bodies. It also includes private debt guaranteed for repayment by the Government or a public entity. The debt has a maturity of more than one year.

Disbursed Debt Outstanding is the total public or publicly guaranteed long-term debt, which has been drawn by the borrower and is outstanding at the end of the year.

Disbursements are drawings (the amounts actually received) by the borrower on loan commitments during the year specified.

Amortisation is the repayment of principal by the borrower in the year specified.

Debt Service Payments is the sum of amortisation and interest payments actually made by the borrower in the year specified.

Net Borrowing is disbursements minus amortisation. It represents the net flows received by the borrower in the year specified.

Valuation Adjustment is a residual item that is used to account for cancellations and adjustments resulting from the use of different exchange rates, and the rescheduling of other liabilities into external public debt.

Exports of Goods (XG) covers international movement of goods and non-factor services across custom borders. Exports are valued at free on board (fob).

Exports of Goods and Services (XGS) covers international movement of goods and non-factor services across custom borders. Exports are valued at free on board (fob). Exports of goods and services include all transactions involving a change of ownership of goods and services between residents of a country and the rest of the world, including merchandise goods and services.

Central Government Current Revenue (CGCR) consists of tax revenue and non-tax revenue but excludes capital receipts. Tax revenue covers taxes on income, profits social security contributions, taxes on property, domestic taxes on goods and services, etc. Non-tax revenue consists of property income, and operating surpluses of departmental enterprises, receipts from public enterprises, voluntary unrequited non-repayable receipts other than from government, administrative fees and charges, fines, etc.

(Gross) International Reserves is the sum of all the gross foreign of the Central Bank and commercial Banks of a country. These include monetary gold holdings, IMF reserve Tranche Position, Special Drawing Rights (SDR's) holdings and foreign currency balances.

DEBT INDICATORS (RATIOS)

Disbursed Debt Outstanding and total Debt Service Payments, while defining the broad magnitude of the debt problem, are not, by themselves, accurate measures of a country's debt problem. When used in conjunction with other macro economic indicators, however, they can result in ratios that present a fairly accurate picture of a country's debt burden and its capacity to service its external debt. Two of these ratios are highlighted below:

The Ratio of Total Debt to GDP is a measure of the total debt obligations relative to the productive capacity of the country. It indicates the magnitude of effort required, from the productive machinery, to liquidate the outstanding external debt.

The Debt Service Ratio is the ratio of Debt Service Payments (amortisation plus interest payments) to the exports of goods and services. Unlike the Total Debt to GDP ratio, this ratio contrasts the payment obligations due with the principal source from which they will have to be serviced, i.e., foreign exchange earnings from the exports of goods and services. A maximum acceptable limit for this ratio is considered to be 15 percent. Beyond this limit, it is felt that borrowing countries will find it extremely difficult to service their external debts while sustaining current levels of services in their domestic economies.

The two ratios described above, along with the others provided in the publication, give some indication as to the cost of, and capacity for, servicing the external public debt in terms of the output, foreign exchange earnings and tax revenue foregone. The following indicators are provided in the report:

- Disbursed Debt Outstanding per Capita
- Disbursed Debt Outstanding to Gross Domestic Product (GDP)
- Disbursed Debt Outstanding to Exports of Goods (XG)
- Disbursed Debt Outstanding to Exports of Goods and Services (XGS)
- Debt Service Payments to GDP
- Debt Service Payments to XG
- Debt Service Payments to XGS (Debt Service Ratio)
- Debt Service Payments to Central Government Current Revenue (CGCR)
- Debt Service Payments to Disbursements
- Debt Service Payments to International Reserves (IR)
- Interest Payments to GDP
- Interest Payments to XG
- Interest Payments to XGS.

EXCHANGE RATES

The data in this report are presented in US dollars. In some instances, however, the data were collected in national currencies and were converted to US dollars, based on exchange rates obtained from the various Central Banks.

The following exchange rates were used to convert national currencies to US dollars.

EXCHANGE RATES

National Currency per United States Dollar - (US\$)

Country	National Currency (dollar)	1990	1991	1992	1993	1994	1995	1996	1997	1998	1999	2000
OECS Countries	EC\$	2.7	2.7	2.7	2.7	2.7	2.7	2.7	2.7	2.7	2.7	2.7
The Bahamas	B\$	1.0000	1.0000	1.0000	1.0000	1.0000	1.0000	1.0000	1.0000	1.0000	1.0000	1.0000
Barbados	Bd\$	2.0000	2.0000	2.0000	2.0000	2.0000	2.0000	2.0000	2.0000	2.0000	2.0000	2.0000
Belize	BZ\$	2.0000	2.0000	2.0000	2.0000	2.0000	2.0000	2.0000	2.0000	2.0000	2.0000	2.0000
Guyana	G\$	48.2630	118.5400	124.9500	126.8500	138.8900	141.8500	140.0500	141.9300	150.4600	177.0700	181.0900
Jamaica	J\$	7.1800	12.7600	22.8900	25.5800	33.1600	35.3500	36.8800	35.4800	36.5200	39.1800	43.1900
Suriname	Sf	1.7850	1.7850	1.7850	74.1200	201.0500	412.0000	406.0000	406.0000	406.0000	995.0000	...
Trinidad and Tobago	TT\$	4.2500	4.2500	4.2500	5.3400	5.8700	5.8900	5.9900	6.2500	6.2800	6.2700	6.2396

DATA HIGHLIGHTS

EXTERNAL PUBLIC DEBT DATA HIGHLIGHTS

CARICOM

The debt analysis excludes Barbados, and Suriname for the entire period. Total Disbursed External Public Debt Outstanding for the CARICOM region stood at \$US8.2 billion in 2000. MDCs' (Guyana, Jamaica and Trinidad and Tobago) public debt stood at \$US6.2 billion or 76.1 % of the total while LDCs' debt was \$US1.6 billion or 19.4 %. In 1990 the total public debt was \$US9.5 billion with the proportion for the MDCs being 89.1% and LDCs, 8.1%.

The growth of the public debt in 2000 for the region showed an increase of 8.9% in 2000. In 1999 there was a decrease of 4.1% in the total external public debt. MDCs' debt increased by 7.4% in 2000 with Jamaica's debt increasing by 11.6% and Trinidad and Tobago's debt increasing by 6.0%. The growth patterns of the external public debt of CARICOM and that of MDCs are almost identical. The ratio of total debt outstanding to GDP was 33.9 % in 2000. In 1990 this ratio was 64.1 % and in 1995, 50.9%. For MDCs debt outstanding to GDP stood at 39.7 % in 2000 and for LDCs, 44.7 % in this same year. Total debt outstanding to Exports of Goods and Non-factor Services was 55.4 % in 2000, 82.7% in 1995 and 116.5% in 1990.

Total Debt Service Payments for the region stood at \$US1.1 billion in 2000. Corresponding figures for 1995 and 1990 were \$US1.3 billion and \$US1.4 billion respectively. MDCs' debt service payments amounted to \$US938.2 million in 2000 while the figure for LDCs was \$US148.2 million. In 1995 MDCs' debt services payments was \$US1.1 billion and in 1990 \$US1.3 billion. LDCs' debt service payments was \$US53.1 million in 1990.

CARICOM's Debt Service Ratio was 7.7% in 2000 compared to 12.3% in 1995 and 16.8 % in 1990. For MDCs the debt service ratio was 9.4 % in 2000, 16.0% and 25.4% in 1995 and 1990 respectively. The debt service ratio for LDCs was 7.4% in 2000, 5.3% in 1995 and 4.1% in 1990.

CARICOM's Debt Service Payments to GDP was 4.7% in 2000, 7.6 % in 1995 and 9.2% in 1990. CARICOM's Per Capita debt was \$US1421.6 in 2000, \$US1557.9 in 1995 and \$US1797.8 in 1990.

COUNTRY HIGHLIGHTS

Antigua and Barbuda

The growth in debt for Antigua and Barbuda was 1.7% in 2000 and stood at \$US420.2 million. Debt outstanding to GDP was 64.6% in 2000. In 1990 this ratio was over 75% and declined to a low of 51.0% in 1996. The trend in debt

outstanding to exports of goods and services was similar to the ratio of debt outstanding to GDP. In 2000 the ratio of debt outstanding to exports of goods and services was 93.5%. The debt service ratio was 5.7% in 2000 and was under 3% for most of the remaining years. The composition of the debt outstanding showed a changing structure of the debt over time. In 1990, 88% of the debt was owed to private creditors and this trend continued until 1997. In 1998, 48.6% of the debt was from official creditors with bilateral creditors comprising the majority of this debt. This trend persisted up to 2000 with the official creditors surpassing the private creditors with respect to the total debt outstanding from 1999.

The Bahamas

There was negligible change in the public debt outstanding in 2000 as compared to the previous year for the Bahamas. In 1999 the growth in public debt outstanding was 5.2%. There were decreases in the public debt outstanding in 1993-96, ranging from 4.8% to 9.0%. Debt outstanding to GDP was 7.5% in 2000 and was over 7.6% for the remaining years. The debt service ratio stood at 1.8% in 2000, 2.1% in 1999 and was under 5% for the remaining years of the period shown. There was a general increasing pattern in the total debt owed to official creditors from 1991 to 1996 as compared to private creditors with multilateral creditors accounting for the majority of the debt owed. In 1991 the proportion of total debt outstanding to official creditors was 51.2% and this increased to 72.6% in 1995, 76.7% in 1996 and was 69.5% in 2000.

Belize

There was a big increase in net borrowing in 2000 resulting in a growth in the total public debt outstanding of over 66% for Belize. Even with the outstanding adjustment to the 1999 debt figure the growth in the total public debt in 2000 will still be high. Total debt outstanding to GDP was 51.6% in 2000 as compared with a proportion of 32.8% in 1990. The debt service ratio was 11.7% in 2000 compared with ratios of 6.4% in 1990, 10.3% in 1995 and 9.2% in 1999. The structure of the total public debt by creditors showed that the greater proportion of this public debt was owed to official creditors. This proportion was 87.8% in 1990 moving to 78.3% in 1995, 80.4% in 1996 and declining to 51.3% in 2000. The share of the debt owed to official creditors was divided almost evenly between bilateral and multilateral creditors. In 2000 the proportion of debt owed to commercial banks rose considerably to 43.6%.

Dominica

Dominica's total public debt grew by 8.1% in 2000 compared to a growth rate of 0.9% in 1999. Debt outstanding to GDP was 37% in 2000. Generally the proportion of total debt to GDP was lower in the period 1997-2000 as compared to the period 1990-96. The debt service ratio was 5.1% in 2000 and was under 8% for all the remaining years. The structure of the public debt showed close to 100% of the debt was owed to official creditors with the majority of this debt owed to multilateral creditors.

Grenada

Grenada's public debt grew by 22.3% in 2000 as compared to a growth rate of 9.8% in 1999. Total public debt to GDP stood at 31.5% in 2000. The debt service ratio was 4.4% in 2000. Official creditors comprised the majority of the public debt of Grenada. However in 2000 the proportion of debt owed to official creditors decreased to 68% from 82.8% in 1999, due mainly to an increase in debt to commercial banks.

Guyana

Guyana's public debt outstanding declined for the fifth successive year with the decline in 2000 being 1.3%. In 1999 the decline was 19.7% and 1996, 25.3%. Total public debt outstanding to GDP was 166.2% in 2000. This ratio was as high as 532.4 in 1991. The debt service ratio was 12.2% in 2000 compared to 60% in 1990 and 16.9% in 1995. The structure of the public debt by creditors showed that over 91% of the public debt was owed to official creditors with multilateral creditors comprising the majority of the debt.

Jamaica

The growth in Jamaica's public debt was 11.6% in 2000. This growth followed a decline of 8.5% in 1999. Total public debt to GDP was 48.7% in 2000 as compared with 97.7% in 1990 and 115.5% in 1992. The debt service ratio was 10.7% in 2000 compared to 17.3% in 1999. This ratio was over 22% for the period 1990-93. The structure of the total debt outstanding by creditors showed official creditors accounting for the majority of the public debt with proportions of over 82% during the period 1990-97. There was a decline in the proportion of debt owed to official creditors in 1998-2000. In 2000 the proportion of debt owing to official creditors was 69.1% implying an increase in the debt owed to private creditors, 30.9% in 2000.

Montserrat

Montserrat's debt experienced the fourth successive year of decline in 2000. The decline in 2000 was 3.7% following a decline of 21.5% in 1999. The ratio of debt outstanding to GDP was 23% in 2000 compared to 4.5% in 1990 and 17.7% in 1995. The debt service ratio for Montserrat was 0.9% in 2000. Montserrat's total debt outstanding was owed in its entirety to multilateral creditors.

St. Kitts and Nevis

The growth in the total public debt for St Kitts and Nevis was 5.8% in 2000 as compared with 22.9% in 1999, and 75.3% in 1997. The total debt outstanding to GDP was 49.3% in 2000 and was 50.2% in 1999. During the period 1990-96 the total debt outstanding to GDP was approximately between 23 and 25%. The debt service ratio was 13.7% in 2000 and 11.6% in 1999. This ratio was under 6% for the period 1990-97. There was a change in the structure of the total public debt outstanding by creditors. For the period 1990-96 over 82% of the public debt

originated from official creditors with changes also taking place within the proportion owed to bilateral and multilateral creditors. From 1998 the proportion of debt outstanding to official creditors fell under 70% and was 57.1% in 2000. The debt outstanding to private creditors therefore increased during these years with the proportion owing to commercial banks being 29.6% in 2000.

Saint Lucia

The total public debt for Saint Lucia grew by 16.8% in 2000. In 1999 the growth in the public debt was 10%. The total debt outstanding to GDP was 26.7% in 2000 and was 20% and over from 1993 to 2000. The debt service ratio was 5.3% in 2000, 4.3% in 1999 and was under 4% for the remaining years. The structure of the public debt by creditors showed a changing pattern over time from 70% of the debt being outstanding to official creditors in 1990 to over 85% from 1992-95. From 1996-1998 over 80% of the debt outstanding was owed to official creditors. In 2000 the proportion owed to official creditors declined to 64%, with the resultant increase in debt to private creditors reflected in an increase of 25.1% owed to commercial banks.

St. Vincent and the Grenadines

There was a decline in the public debt for St. Vincent and the Grenadines in 2000 of 0.5% which followed an increase in the public debt of 59% in 1999. Net borrowing increased from \$US13.6 million to \$US58.4 million from 1998 to 1999. The total public debt to GDP was 46.6% in 2000 and 48.5% in 1999. With the exception of 1990 this ratio was always over 30%. The debt service ratio was 5.7% in 2000 and ranged from 2.8% in 1990 to 6.5% in 1999. The structure of the public debt outstanding by creditors showed that over 93% of the debt was owed to official creditors for the period 1990-98. In 1999 and 2000 the proportion owed to official creditors fell to approximately 62%. The increase in debt owed to private creditors in 1999 and 2000 was for commercial banks.

Trinidad and Tobago

The total public debt outstanding of Trinidad and Tobago grew by 6% in 2000 and 7.7% in 1999. In the period 1991-98 the public debt reflected negative growth. The total debt to GDP ratio was 20.7% in 2000. In the period 1990-94 this ratio was over 40%. The debt service ratio was 7.8% in 2000 compared with a ratio of 18.9% in 1990, 30.6% in 1993 and 15% in 1995. With the exception of 1997 and 1998, the majority of the total public debt was owed to private creditors of which commercial banks were owed the majority of this debt, for the period 1990-94, and bond-holders in 1995-96 and 1999-2000. The proportion of the total debt outstanding to multilateral creditors was higher than any other category in the period 1995-1999. In 2000 the proportion of the debt owed to bond holders was 54.9% representing the highest proportion owed to creditors.

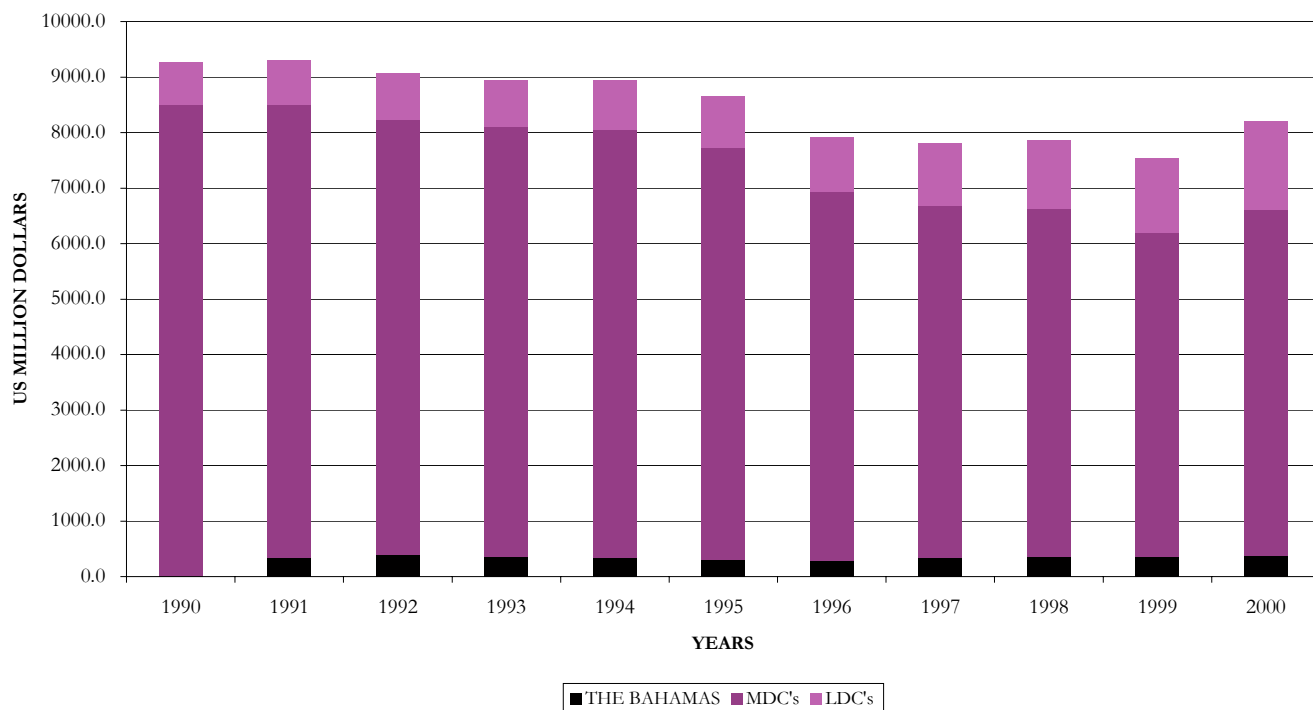
PART 1

CARICOM: EXTERNAL PUBLIC DEBT AGGREGATES AND INDICATORS 1990 – 2000

CARICOM
TABLE 1.1: DISBURSED EXTERNAL PUBLIC DEBT OUTSTANDING: 1990-2000

COUNTRY	(In millions of United States Dollars)										
	1990	1991	1992	1993	1994	1995	1996	1997	1998	1999	2000
CARICOM	9531.2	9314.8	9066.2	8943.6	8952.0	8652.7	7908.6	7809.7	7863.3	7540.9	8212.8
The Bahamas	266.2	342.2	377.6	359.7	334.6	304.4	286.2	336.1	349.9	368.1	367.9
CARIBBEAN COMMON MARKET	9265.0	8972.7	8688.6	8584.0	8617.4	8348.3	7622.5	7473.6	7513.4	7172.8	7844.9
MDCs	8493.0	8167.6	7859.9	7742.8	7714.8	7415.4	6644.7	6354.6	6284.9	5819.8	6249.9
Guyana	1820.1	1855.4	1967.2	1953.5	1999.5	2058.3	1537.0	1513.0	1507.5	1210.9	1194.8
Jamaica	4152.4	3874.3	3678.0	3687.2	3651.8	3451.9	3231.9	3277.6	3306.4	3024.1	3375.3
Trinidad and Tobago	2520.5	2437.9	2214.7	2102.1	2063.5	1905.2	1875.8	1564.0	1471.1	1584.8	1679.8
LDCs	771.9	805.1	828.7	841.2	902.6	932.9	977.7	1119.0	1228.5	1353.0	1595.0
Belize	132.8	142.9	149.9	167.9	183.9	185.7	221.4	243.4	263.1	254.5	423.7
OECS	639.1	662.2	678.8	673.3	718.7	747.2	756.3	875.6	965.4	1098.5	1171.3
Antigua and Barbuda	296.1	291.1	280.4	264.1	277.3	286.4	275.5	347.8	397.6	420.2	427.3
Dominica	85.8	93.9	97.0	94.1	98.7	103.1	102.6	89.0	90.9	91.7	99.2
Grenada	88.6	87.5	85.0	81.5	88.6	88.4	90.6	93.1	96.2	105.6	129.2
Montserrat	3.0	3.4	5.2	10.0	10.2	10.7	11.1	10.6	10.2	8.0	7.7
St. Kitts and Nevis	39.9	41.6	45.3	47.7	51.6	55.1	61.4	107.6	124.5	153.1	161.9
Saint Lucia	70.0	79.5	95.8	99.4	105.4	116.2	128.4	138.7	145.3	159.8	186.7
St. Vincent and the Grenadines	55.6	65.2	70.2	76.5	86.8	87.3	86.8	88.7	100.7	160.1	159.3

FIGURE 1.1: CARICOM, THE BAHAMAS, LDCs AND MDCs DISBURSED EXTERNAL PUBLIC DEBT OUTSTANDING: 1990-2000

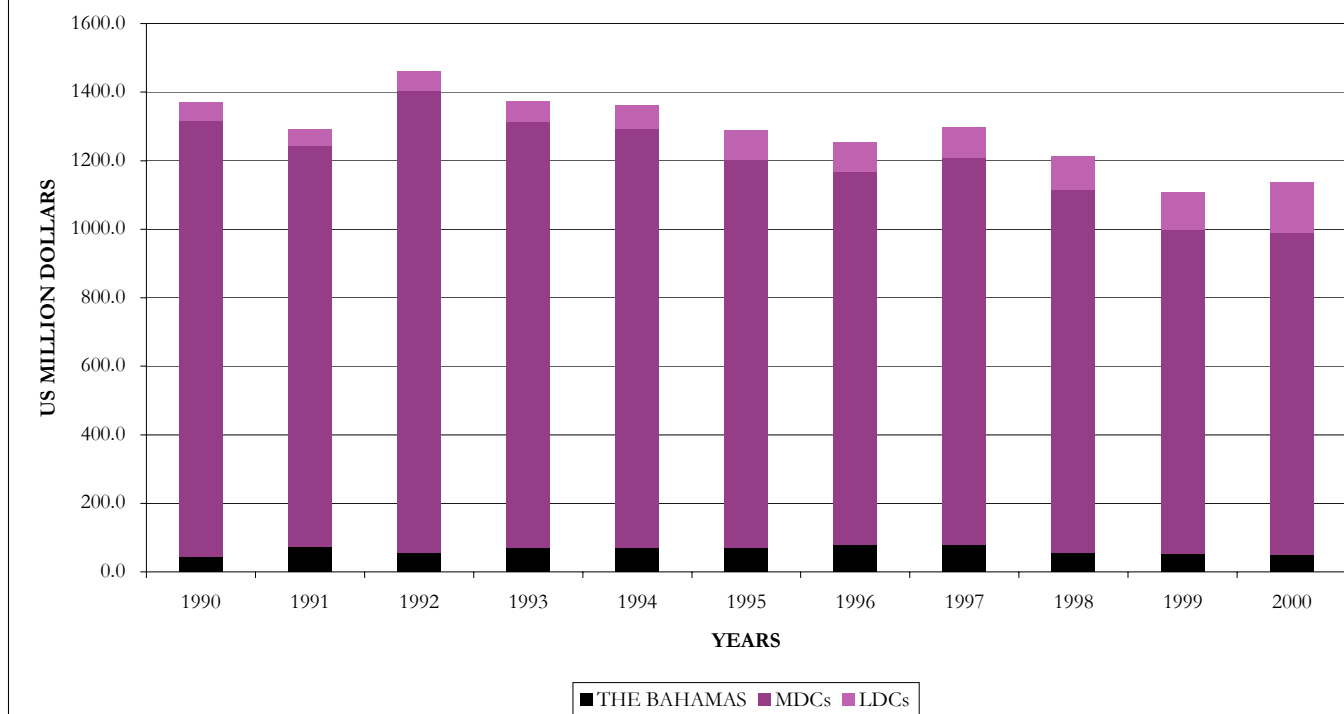


CARICOM

TABLE 1.2 CARICOM'S DEBT SERVICE PAYMENTS ON ITS EXTERNAL PUBLIC DEBT: 1990-2000

COUNTRY	(In millions of United States Dollars)										
	1990	1991	1992	1993	1994	1995	1996	1997	1998	1999	2000
CARICOM	1370.1	1293.1	1459.4	1374.2	1363.0	1289.6	1251.4	1297.6	1212.8	1107.1	1136.8
The Bahamas	45.2	73.2	57.2	68.9	70.9	70.0	79.4	79.3	56.5	51.0	50.4
CARIBBEAN COMMON MARKET	1324.9	1219.9	1402.2	1305.3	1292.1	1219.6	1172.0	1218.4	1156.3	1056.0	1086.4
MDCs	1271.7	1169.8	1346.0	1245.1	1221.6	1133.8	1087.4	1128.9	1056.8	946.4	938.2
Guyana	151.5	71.1	88.0	85.1	99.2	108.0	114.8	131.3	130.1	70.2	82.9
Jamaica	663.5	620.6	637.9	542.1	536.0	592.6	579.5	523.1	635.6	603.5	477.2
Trinidad and Tobago	456.7	478.1	620.1	617.9	586.4	433.2	393.1	474.5	291.1	272.7	378.1
LDCs	53.1	50.1	56.2	60.2	70.4	85.8	84.6	89.5	99.5	109.7	148.2
Belize	16.8	15.3	13.6	15.7	23.9	30.8	30.3	30.6	34.0	33.7	54.2
OECS	36.3	34.8	42.6	44.5	46.5	55.0	54.3	58.9	65.5	76.0	94.0
Antigua and Barbuda	13.4	8.2	8.5	7.9	8.7	14.3	9.2	10.1	13.7	13.8	26.1
Dominica	5.2	5.1	6.1	6.7	7.2	7.4	8.9	10.7	8.0	8.0	7.1
Grenada	4.1	4.9	6.8	7.1	6.8	8.7	8.6	8.4	8.3	9.4	10.3
Montserrat	0.5	0.4	0.4	0.5	0.7	0.6	0.8	0.6	0.5	0.3	0.2
St. Kitts and Nevis	3.3	3.4	4.5	5.1	6.2	6.4	6.8	7.4	11.2	16.8	20.7
Saint Lucia	6.1	8.6	11.5	11.9	10.6	11.0	11.7	12.4	14.2	16.3	19.4
St. Vincent and the Grenadines	3.7	4.2	4.7	5.3	6.4	6.6	8.3	9.2	9.6	11.4	10.2

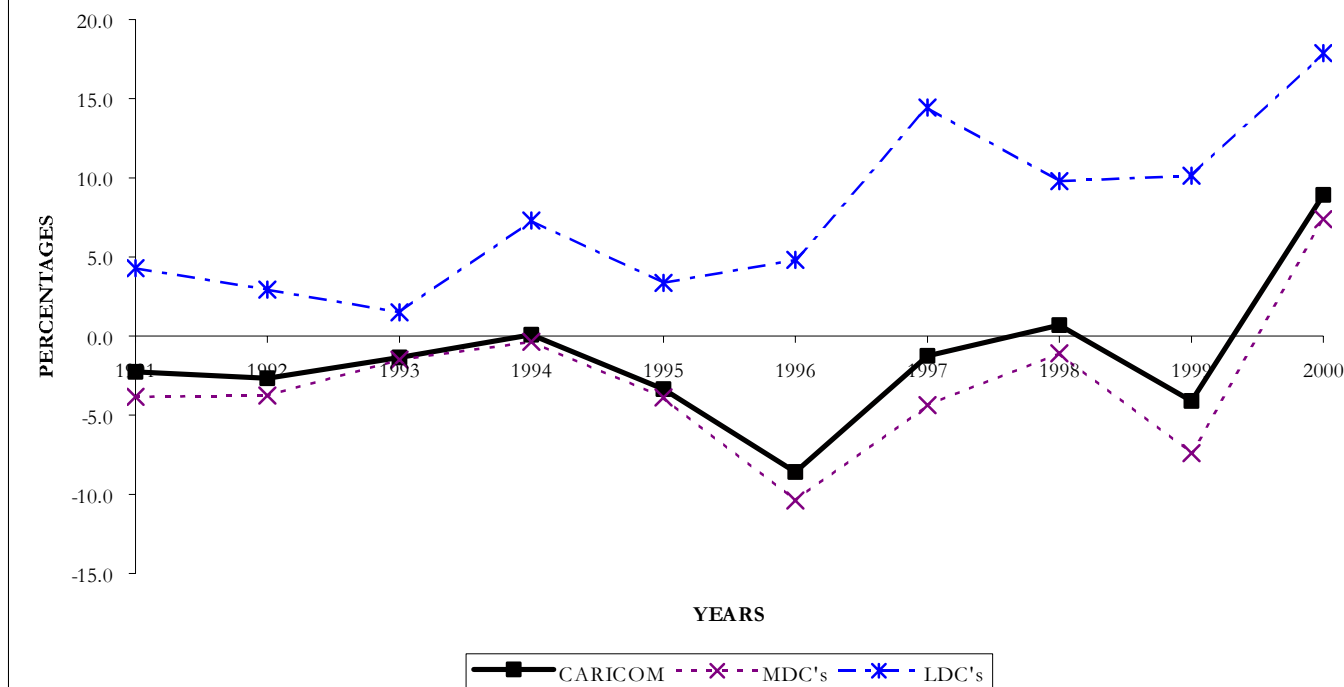
FIGURE 1.2: CARICOM'S DEBT SERVICE PAYMENTS ON ITS EXTERNAL PUBLIC DEBT: 1990-2000



CARICOM
TABLE 1.3 GROWTH OF EXTERNAL PUBLIC DEBT: 1991-2000
(Percentage change from the preceding year)

COUNTRY	1991	1992	1993	1994	1995	1996	1997	1998	1999	2000
CARICOM	-2.3	-2.7	-1.4	0.1	-3.3	-8.6	-1.3	0.7	-4.1	8.9
The Bahamas	28.5	10.4	-4.8	-7.0	-9.0	-6.0	17.4	4.1	5.2	0.0
CARIBBEAN COMMON MARKET	-3.2	-3.2	-1.2	0.4	-3.1	-8.7	-2.0	0.5	-4.5	9.4
MDCs	-3.8	-3.8	-1.5	-0.4	-3.9	-10.4	-4.4	-1.1	-7.4	7.4
Guyana	1.9	6.0	-0.7	2.4	2.9	-25.3	-1.6	-0.4	-19.7	-1.3
Jamaica	-6.7	-5.1	0.3	-1.0	-5.5	-6.4	1.4	0.9	-8.5	11.6
Trinidad and Tobago	-3.3	-9.2	-5.1	-1.8	-7.7	-1.5	-16.6	-5.9	7.7	6.0
LDCs	4.3	2.9	1.5	7.3	3.4	4.8	14.4	9.8	10.1	17.9
Belize	7.6	4.9	12.0	9.5	1.0	19.2	9.9	8.1	-3.3	66.5
OECS	3.6	2.5	-0.8	6.7	4.0	1.2	15.8	10.3	13.8	6.6
Antigua and Barbuda	-1.7	-3.7	-5.8	5.0	3.3	-3.8	26.2	14.3	5.7	1.7
Dominica	9.5	3.2	-2.9	4.9	4.5	-0.6	-13.2	2.1	0.9	8.1
Grenada	-1.3	-2.9	-4.1	8.7	-0.2	2.4	2.8	3.3	9.8	22.3
Montserrat	13.7	51.3	92.7	2.4	4.3	4.4	-5.3	-3.4	-21.5	-3.7
St. Kitts and Nevis	4.2	9.0	5.3	8.3	6.6	11.5	75.3	15.7	22.9	5.8
Saint Lucia	13.5	20.5	3.7	6.0	10.2	10.6	8.0	4.8	10.0	16.8
St. Vincent and the Grenadines	17.2	7.7	8.9	13.5	0.6	-0.6	2.2	13.5	59.0	-0.5

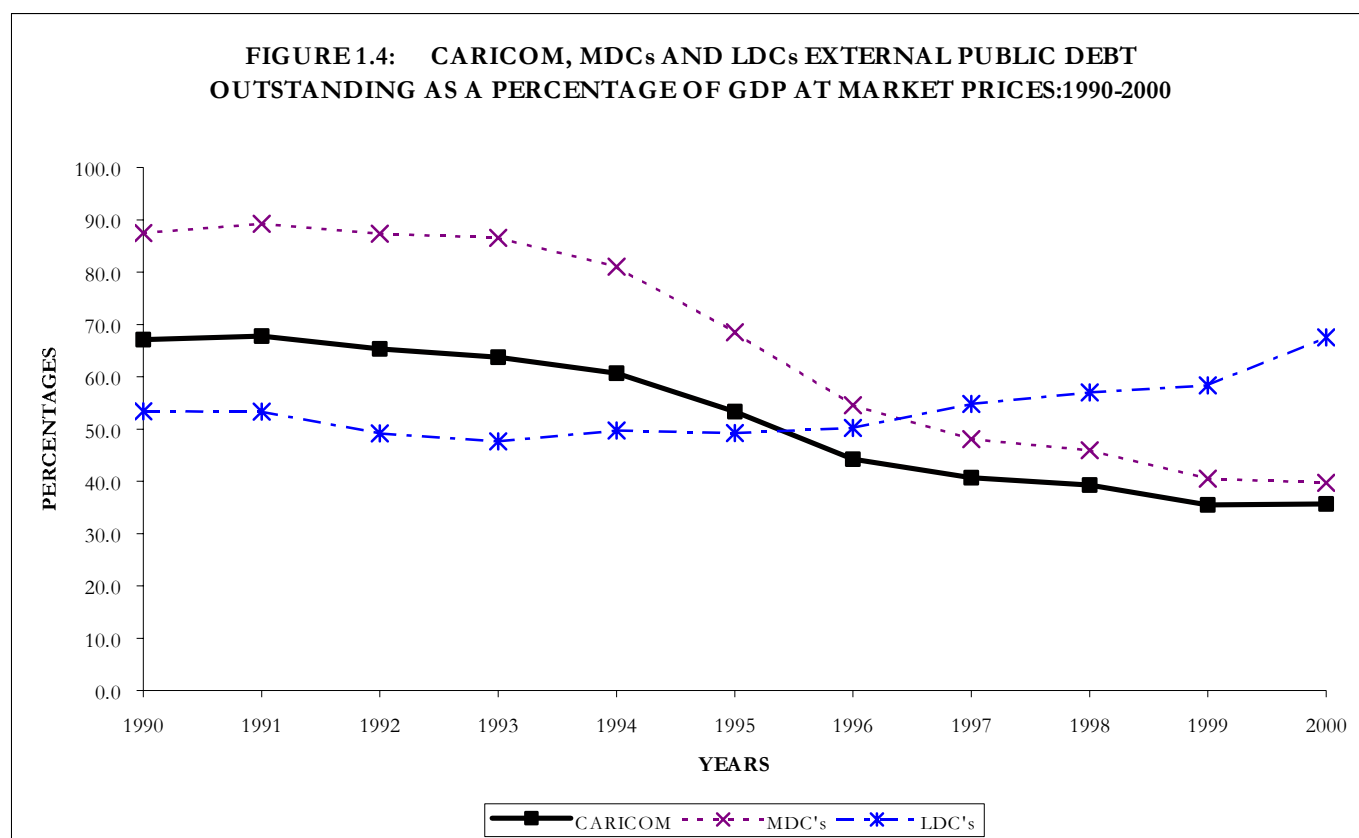
FIGURE 1.3: CARICOM, MDCs AND LDCs GROWTH OF EXTERNAL PUBLIC DEBT OUTSTANDING: 1991-2000



CARICOM

TABLE 1.4: DISBURSED DEBT OUTSTANDING AS A PERCENTAGE OF ITS GDP AT MARKET PRICES: 1990-2000

COUNTRY	1990	1991	1992	1993	1994	1995	1996	1997	1998	1999	2000
CARICOM	64.1	64.7	62.5	60.8	57.7	50.9	42.2	38.8	37.4	33.8	33.9
The Bahamas	8.5	11.1	11.8	10.8	9.8	8.7	7.6	8.5	8.3	8.0	7.5
CARIBBEAN COMMON MARKET	78.9	79.4	76.8	75.4	71.3	61.8	50.8	46.2	44.6	40.4	40.6
MDCs	87.4	89.3	87.4	86.6	81.1	68.5	54.5	48.1	45.9	40.5	39.7
Guyana	459.3	532.4	526.1	419.0	377.8	330.9	218.0	203.7	228.5	176.7	166.2
Jamaica	97.7	110.9	115.5	94.7	90.1	71.3	55.1	49.2	49.3	44.4	48.7
Trinidad and Tobago	49.7	45.9	40.7	45.8	41.8	35.5	33.4	26.9	23.3	23.1	20.7
LDCs	38.1	37.5	35.7	34.6	35.0	34.7	34.7	37.6	38.9	40.0	44.7
Belize	32.8	33.0	30.9	31.7	33.3	31.6	36.6	37.5	39.3	34.3	51.6
OECS	39.5	38.7	36.9	35.4	35.5	35.6	34.1	37.7	38.8	41.6	42.7
Antigua and Barbuda	75.6	70.9	66.2	57.8	55.4	58.0	51.0	59.9	64.1	64.5	64.6
Dominica	51.6	52.1	50.6	47.0	45.8	47.1	43.4	36.3	35.0	34.3	37.0
Grenada	40.1	36.2	33.9	32.6	33.8	32.0	30.7	29.6	27.4	27.9	31.5
Montserrat	4.5	6.1	8.8	16.1	16.1	17.7	22.9	26.0	27.3	22.8	23.0
St. Kitts and Nevis	25.0	25.3	24.9	24.0	23.3	23.9	25.0	39.2	43.4	50.2	49.3
Saint Lucia	16.8	17.8	19.3	20.0	20.3	21.0	22.5	24.1	23.5	23.7	26.7
St. Vincent and the Grenadines	28.1	30.7	30.1	32.0	35.7	33.1	31.2	30.2	31.7	48.5	46.6

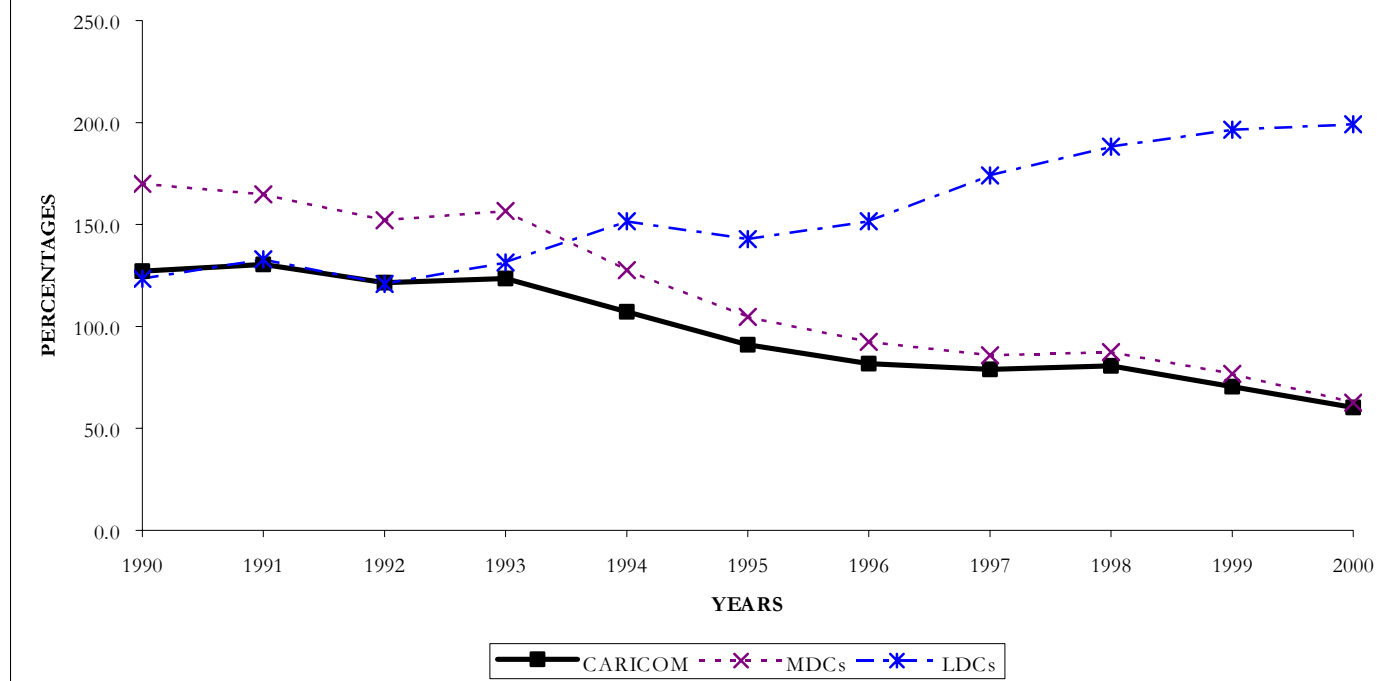


CARICOM

TABLE 1.5: DISBURSED DEBT OUTSTANDING AS A PERCENTAGE OF ITS XGS: 1990-2000

COUNTRY	1990	1991	1992	1993	1994	1995	1996	1997	1998	1999	2000
CARICOM	116.5	118.3	109.7	110.1	96.1	82.7	74.1	71.1	72.0	63.1	55.4
The Bahamas	14.2	21.6	23.5	21.8	19.6	17.2	15.6	18.3	18.5	15.2	12.9
CARIBBEAN COMMON MARKET	147.1	142.7	130.5	132.7	113.3	96.0	86.2	81.8	83.3	75.3	65.4
MDCs	169.9	164.8	152.1	156.6	127.7	104.6	92.4	85.8	87.4	76.7	62.5
Guyana	721.4	630.0	399.4	365.6	337.3	321.6	209.4	200.7	215.1	177.2	175.6
Jamaica	178.3	170.7	156.3	154.0	115.9	97.1	92.7	92.0	93.0	86.8	75.5
Trinidad and Tobago	104.2	102.0	95.4	104.3	89.7	65.8	63.2	50.6	50.1	46.4	34.7
LDCs	59.3	60.3	55.6	55.1	57.8	58.0	59.2	64.5	67.3	69.7	79.7
Belize	50.9	55.5	51.8	57.8	62.1	61.9	71.7	71.5	77.4	69.5	91.8
OECS	61.4	61.5	56.5	54.5	56.9	57.1	56.4	62.8	64.9	69.7	76.0
Antigua and Barbuda	85.8	78.7	68.8	60.1	63.5	71.3	68.4	78.5	85.8	88.3	93.5
Dominica	96.1	100.9	99.3	96.2	98.8	92.4	84.3	64.9	60.0	59.8	71.7
Grenada	95.2	89.6	85.3	73.8	69.9	71.5	68.8	67.0	58.0	47.4	54.8
Montserrat	15.8	17.6	24.3	39.0	34.0	29.0	19.6	47.8	71.8	37.1	45.8
St. Kitts and Nevis	48.4	42.9	40.2	41.3	42.7	46.5	48.6	73.3	82.9	106.0	107.1
Saint Lucia	24.9	27.8	29.6	30.3	31.2	30.6	36.4	38.7	37.8	41.8	51.4
St. Vincent and the Grenadines	42.7	57.5	50.9	64.0	77.3	64.0	58.2	60.5	64.0	91.3	89.5

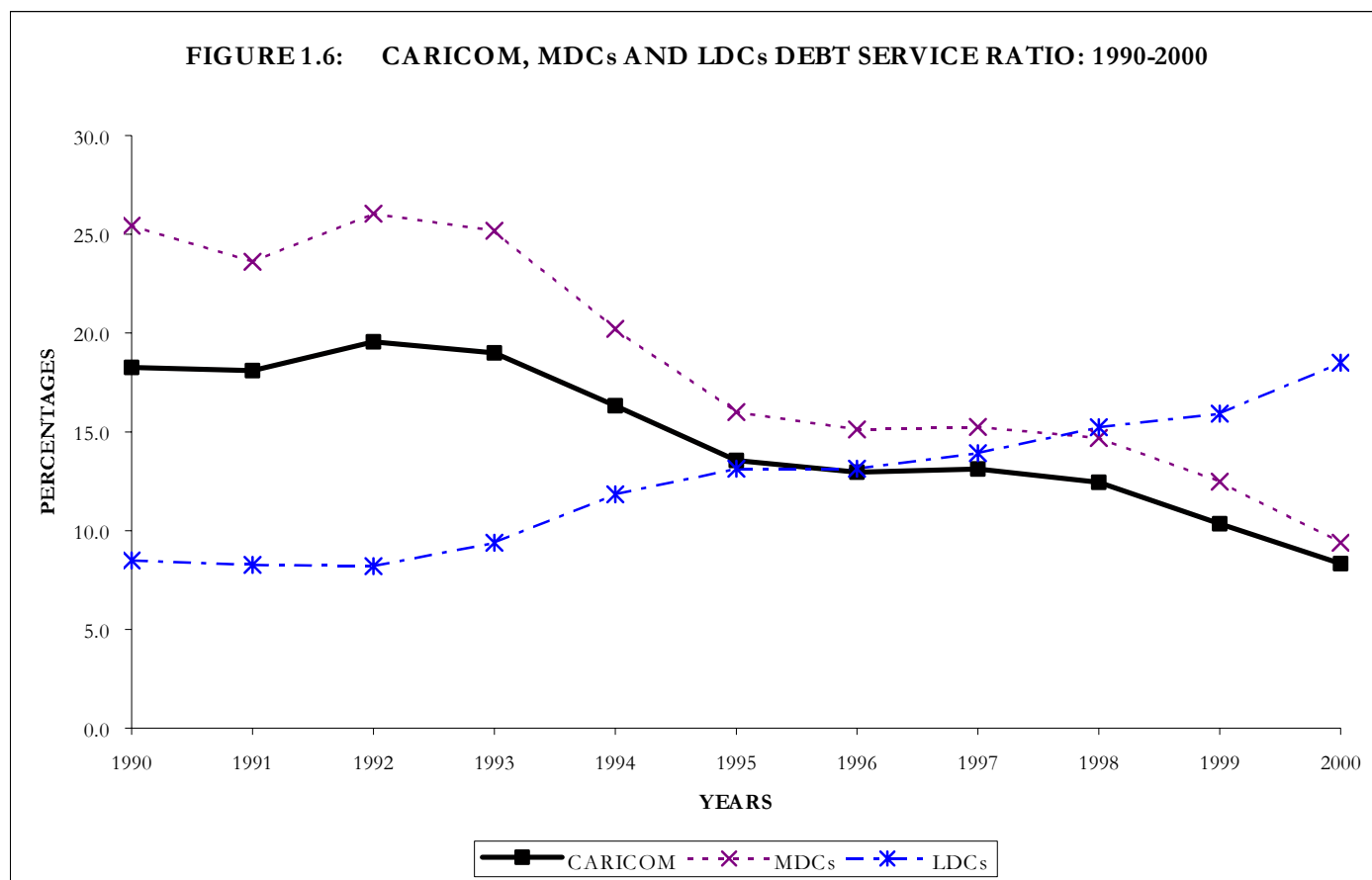
FIGURE 1.5: CARICOM, MDCs AND LDCs EXTERNAL PUBLIC DEBT OUTSTANDING AS A PERCENTAGE OF EXPORT OF GOODS AND SERVICES: 1990-2000



CARICOM
TABLE 1.6: CARICOM'S DEBT SERVICE RATIO: 1990-2000
 (Debt Service Payments as a percentage of XGS)

COUNTRY	1990	1991	1992	1993	1994	1995	1996	1997	1998	1999	2000
CARICOM	16.8	16.4	17.7	16.9	14.6	12.3	11.7	11.8	11.1	9.3	7.7
The Bahamas	2.4	4.6	3.6	4.2	4.1	4.0	4.3	4.3	3.0	2.1	1.8
CARIBBEAN COMMON MARKET	21.0	19.4	21.1	20.2	17.0	14.0	13.3	13.3	12.8	11.1	9.1
MDCs	25.4	23.6	26.0	25.2	20.2	16.0	15.1	15.2	14.7	12.5	9.4
Guyana	60.0	24.1	17.9	15.9	16.7	16.9	15.6	17.4	18.6	10.3	12.2
Jamaica	28.5	27.3	27.1	22.6	17.0	16.7	16.6	14.7	17.9	17.3	10.7
Trinidad and Tobago	18.9	20.0	26.7	30.6	25.5	15.0	13.2	15.4	9.9	8.0	7.8
LDCs	4.1	3.8	3.8	3.9	4.5	5.3	5.1	5.2	5.4	5.6	7.4
Belize	6.4	5.9	4.7	5.4	8.1	10.3	9.8	9.0	10.0	9.2	11.7
OECS	3.5	3.2	3.5	3.6	3.7	4.2	4.1	4.2	4.4	4.8	6.1
Antigua and Barbuda	3.9	2.2	2.1	1.8	2.0	3.6	2.3	2.3	2.9	2.9	5.7
Dominica	5.8	5.5	6.2	6.8	7.3	6.7	7.3	7.8	5.3	5.2	5.1
Grenada	4.4	5.1	6.9	6.4	5.3	7.0	6.6	6.1	5.0	4.2	4.4
Montserrat	2.6	2.2	2.0	2.0	2.2	1.7	1.4	2.7	3.6	1.4	0.9
St. Kitts and Nevis	4.0	3.5	4.0	4.4	5.1	5.4	5.4	5.1	7.5	11.6	13.7
Saint Lucia	2.2	3.0	3.6	3.6	3.1	2.9	3.3	3.5	3.7	4.3	5.3
St. Vincent and the Grenadines	2.8	3.7	3.4	4.5	5.7	4.8	5.5	6.3	6.1	6.5	5.7

FIGURE 1.6: CARICOM, MDCs AND LDCs DEBT SERVICE RATIO: 1990-2000

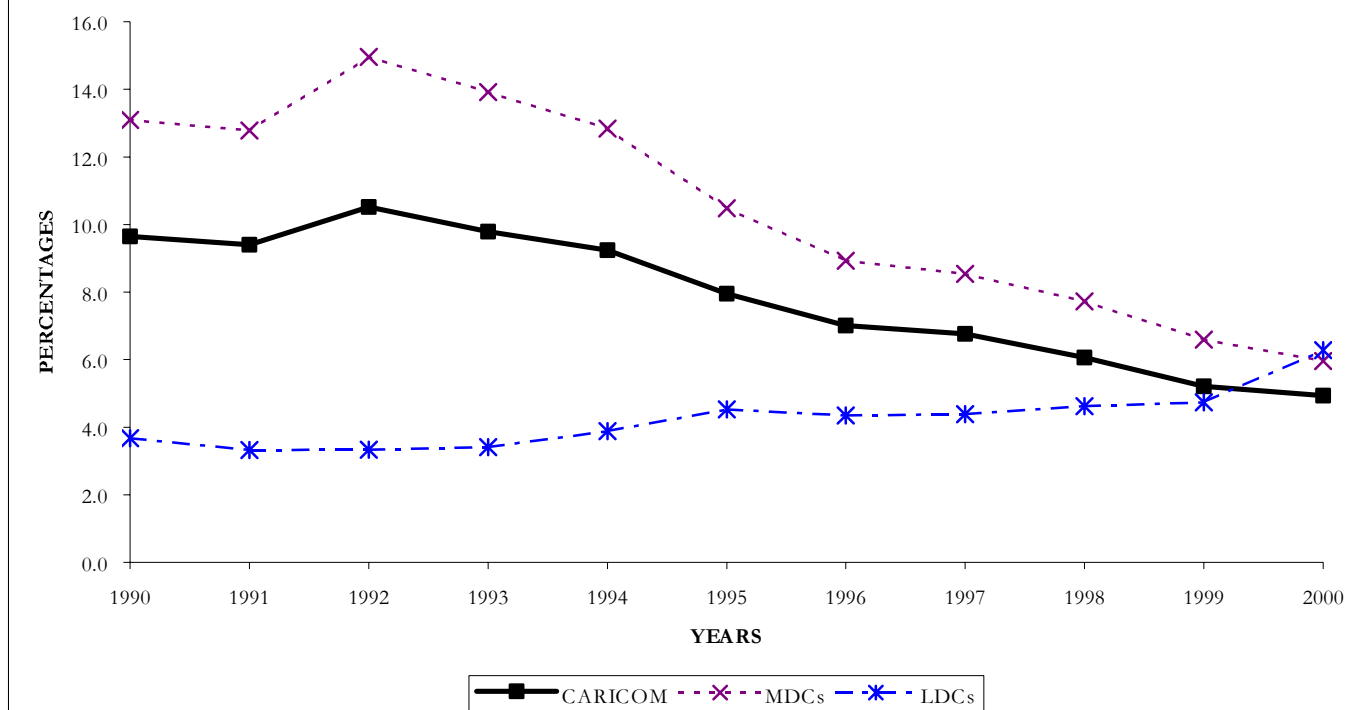


CARICOM

TABLE 1.7: DEBT SERVICE PAYMENTS AS A PERCENTAGE OF ITS GDP AT MARKET PRICES: 1990-2000

COUNTRY	1990	1991	1992	1993	1994	1995	1996	1997	1998	1999	2000
CARICOM	9.2	9.0	10.1	9.3	8.8	7.6	6.7	6.4	5.8	5.0	4.7
The Bahamas	1.4	2.4	1.8	2.1	2.1	2.0	2.1	2.0	1.3	1.1	1.0
CARIBBEAN COMMON MARKET	11.3	10.8	12.4	11.5	10.7	9.0	7.8	7.5	6.9	5.9	5.6
MDCs	13.1	12.8	15.0	13.9	12.8	10.5	8.9	8.5	7.7	6.6	6.0
Guyana	38.2	20.4	23.5	18.3	18.7	17.4	16.3	17.7	19.7	10.2	11.5
Jamaica	15.6	17.8	20.0	13.9	13.2	12.2	9.9	7.9	9.5	8.9	6.9
Trinidad and Tobago	9.0	9.0	11.4	13.5	11.9	8.1	7.0	8.2	4.6	4.0	4.7
LDCs	2.6	2.3	2.4	2.5	2.7	3.2	3.0	3.0	3.1	3.2	4.2
Belize	4.1	3.5	2.8	3.0	4.3	5.2	5.0	4.7	5.1	4.5	6.6
OECS	2.2	2.0	2.3	2.3	2.3	2.6	2.5	2.5	2.6	2.9	3.4
Antigua and Barbuda	3.4	2.0	2.0	1.7	1.7	2.9	1.7	1.7	2.2	2.1	3.9
Dominica	3.1	2.8	3.2	3.3	3.4	3.4	3.8	4.4	3.1	3.0	2.6
Grenada	1.9	2.0	2.7	2.8	2.6	3.1	2.9	2.7	2.4	2.5	2.5
Montserrat	0.7	0.8	0.7	0.8	1.0	1.0	1.6	1.5	1.4	0.9	0.5
St. Kitts and Nevis	2.0	2.1	2.5	2.6	2.8	2.8	2.8	2.7	3.9	5.5	6.3
Saint Lucia	1.5	1.9	2.3	2.4	2.0	2.0	2.0	2.2	2.3	2.4	2.8
St. Vincent and the Grenadines	1.9	2.0	2.0	2.2	2.6	2.5	3.0	3.1	3.0	3.5	3.0

**FIGURE 1.7: CARICOM, MDCs AND LDCs DEBT SERVICE PAYMENTS
AS A PERCENTAGE OF GDP AT MARKET PRICES: 1990-2000**

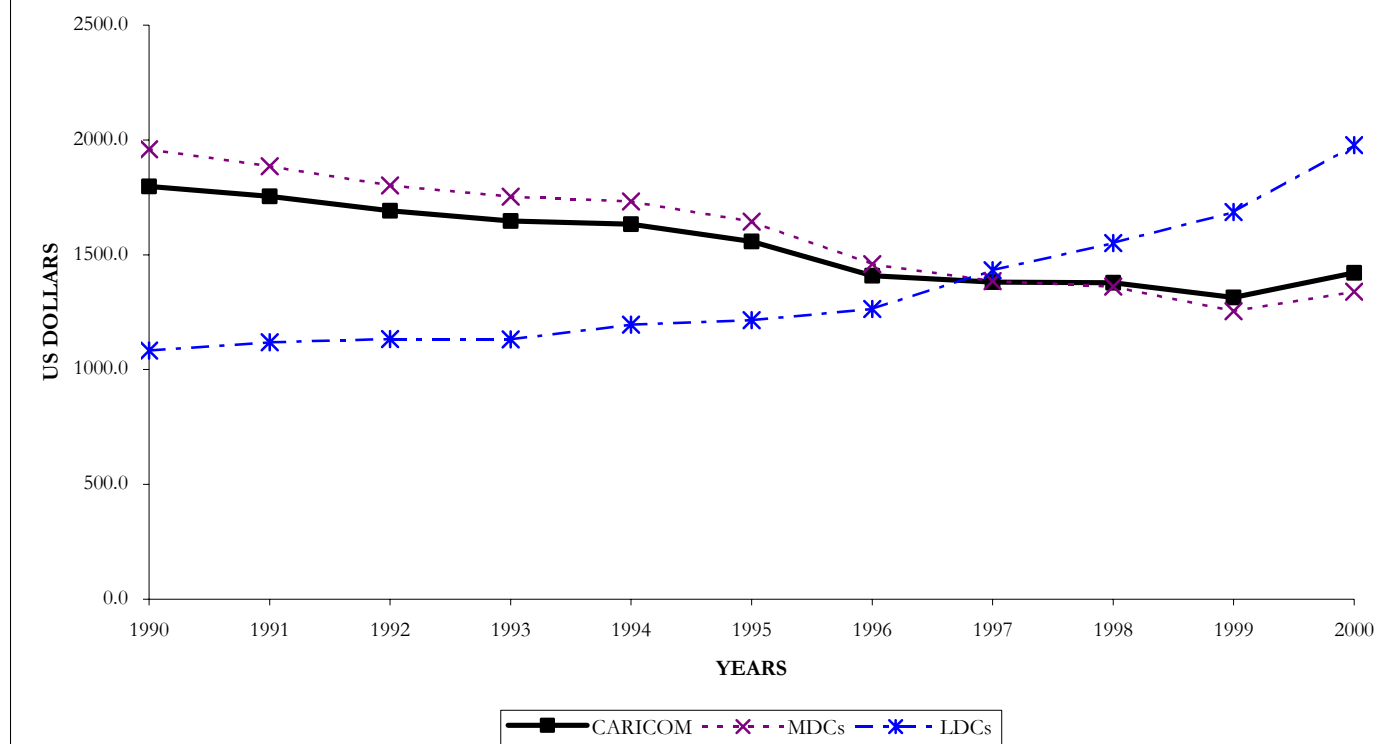


CARICOM

TABLE 1.8: PER CAPITA DISBURSED EXTERNAL PUBLIC DEBT OUTSTANDING: 1990-2000

	(In United States Dollars)										
COUNTRY	1990	1991	1992	1993	1994	1995	1996	1997	1998	1999	2000
CARICOM	1797.8	1753.9	1691.8	1647.3	1632.6	1557.9	1408.8	1380.8	1378.5	1314.1	1421.6
The Bahamas	1043.5	1321.1	1430.4	1337.0	1225.5	1095.0	1004.0	1163.4	1191.3	1233.4	1206.3
CARIBBEAN COMMON MARKET	1835.9	1776.0	1705.4	1663.5	1653.9	1582.3	1430.5	1392.5	1388.7	1318.5	1433.6
MDCs	1959.6	1885.1	1801.2	1753.1	1731.7	1644.8	1458.9	1385.6	1360.8	1254.8	1339.5
Guyana	2427.1	2580.2	2761.3	2658.2	2680.3	2706.9	1995.9	1952.0	1949.2	1571.4	1547.3
Jamaica	1752.9	1622.1	1525.3	1514.4	1484.8	1387.4	1284.8	1290.1	1290.3	1171.4	1298.3
Trinidad and Tobago	2074.2	1989.9	1786.2	1685.9	1651.1	1512.1	1478.1	1230.9	1147.0	1232.6	1298.3
LDCs	1083.4	1119.2	1133.4	1131.1	1195.1	1215.3	1263.2	1433.2	1551.3	1686.8	1977.4
Belize	702.6	736.6	753.3	819.0	871.6	857.7	997.2	1064.3	1103.1	1040.9	1759.6
OECS	1220.8	1260.5	1275.6	1249.9	1320.5	1355.8	1370.2	1586.1	1744.4	1969.9	2070.1
Antigua and Barbuda	4642.6	4556.6	4334.3	4031.5	4174.9	4236.5	4015.2	5048.3	5691.3	5930.1	5952.0
Dominica	1200.2	1314.5	1349.4	1293.5	1334.7	1373.7	1360.2	1178.3	1196.5	1206.3	1302.3
Grenada	936.0	915.2	880.5	840.3	906.1	897.8	915.7	936.1	960.8	1048.7	1274.1
Montserrat	254.0	314.5	475.7	952.5	984.3	1006.2	1416.3	1732.2	2835.6	1678.3	1560.8
St. Kitts and Nevis	952.5	1013.6	1061.6	1095.6	1199.5	1265.1	1451.9	2642.0	3102.7	3872.3	3637.6
Saint Lucia	522.2	584.9	693.7	710.1	738.6	799.9	869.4	927.1	956.3	1039.7	1204.3
St. Vincent and the Grenadines	526.2	612.1	653.7	699.0	789.6	789.4	780.3	794.7	900.5	1429.2	1422.4

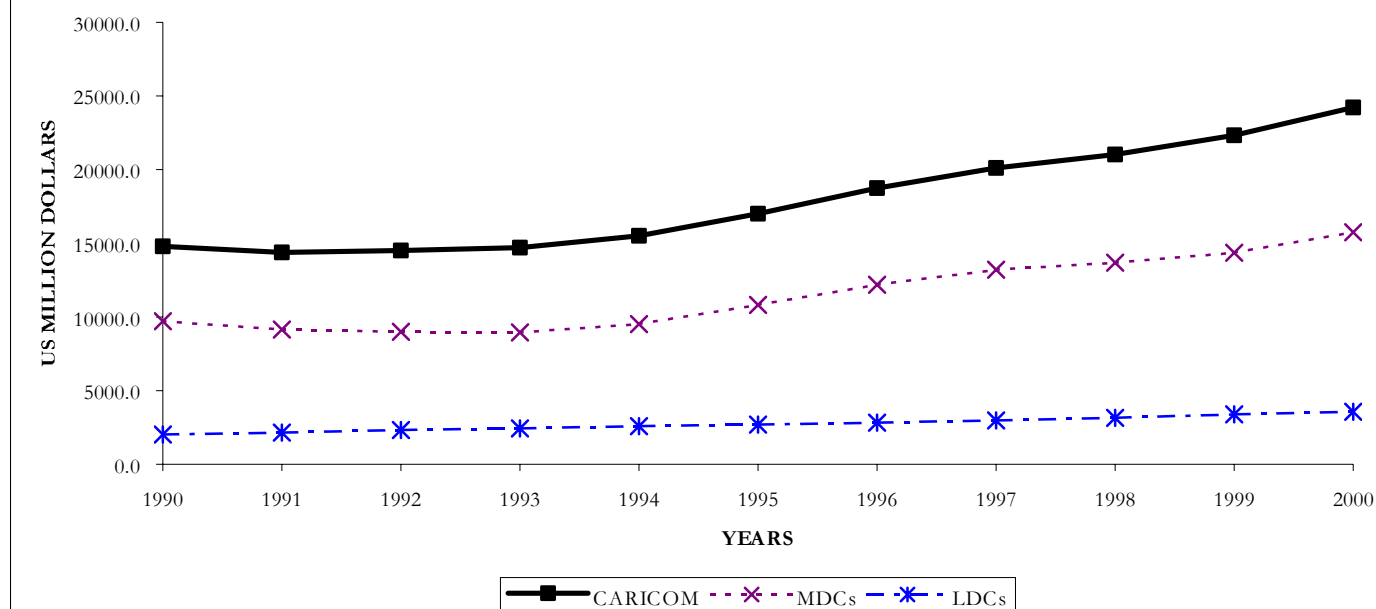
FIGURE 1.8: CARICOM, MDCs AND LDCs PER CAPITA DISBURSED EXTERNAL PUBLIC DEBT OUTSTANDING: 1990-2000



CARICOM
TABLE 1.9: GROSS DOMESTIC PRODUCT MARKET PRICES: 1990-2000

COUNTRY	(In millions of United States Dollars)										
	1990	1991	1992	1993	1994	1995	1996	1997	1998	1999	2000
CARICOM	14871.6	14386.2	14514.8	14702.5	15519.2	17010.7	18747.3	20125.5	21035.2	22327.2	24232.0
The Bahamas	3134.2	3090.0	3195.5	3323.0	3425.0	3504.0	3742.0	3940.0	4190.0	4573.0	4920.0
CARIBBEAN COMMON MARKET	11737.4	11296.2	11319.3	11379.5	12094.2	13506.7	15005.3	16185.5	16845.2	17754.2	19312.0
MDCs	9712.4	9150.7	8997.2	8945.5	9516.9	10821.7	12184.0	13212.1	13685.2	14369.4	15747.2
Guyana	396.3	348.5	373.9	466.2	529.2	622.1	705.1	742.6	659.6	685.4	718.8
Jamaica	4248.0	3494.3	3183.9	3893.1	4054.2	4840.0	5862.3	6655.8	6708.8	6818.2	6928.4
Trinidad and Tobago	5068.1	5307.9	5439.4	4586.2	4933.5	5359.6	5616.6	5813.7	6316.8	6865.8	8100.0
LDCs	2025.0	2145.5	2322.1	2434.0	2577.3	2685.0	2821.3	2973.4	3160.0	3384.8	3564.8
Belize	405.4	432.6	484.5	530.3	552.0	587.2	605.7	648.6	668.7	742.8	820.6
OECS	1619.6	1712.9	1837.6	1903.7	2025.3	2097.8	2215.6	2324.8	2491.3	2642.0	2744.3
Antigua and Barbuda	391.5	410.4	423.8	456.5	500.1	493.6	540.4	581.0	620.1	651.1	661.7
Dominica	166.3	180.4	191.8	200.4	215.5	219.1	236.3	245.1	259.5	267.7	268.3
Grenada	221.1	241.6	250.9	250.0	262.6	276.3	294.7	314.9	350.6	378.2	410.6
Montserrat	67.1	55.8	58.8	62.0	63.6	60.2	48.7	40.6	37.3	35.1	33.5
St. Kitts and Nevis	159.3	164.4	181.8	198.3	221.7	230.6	245.7	274.9	287.1	304.7	328.4
Saint Lucia	416.1	447.8	497.4	497.7	518.6	554.0	571.4	574.5	619.5	675.4	699.7
St. Vincent and the Grenadines	198.2	212.5	233.2	238.8	243.3	263.9	278.5	293.8	317.3	329.8	342.0

FIGURE 1.9: CARICOM, MDCs AND LDCs GROSS DOMESTIC PRODUCT AT MARKET PRICES: 1990-2000



CARICOM
TABLE 1.10: EXPORTS OF GOODS AND SERVICES: 1990-2000

COUNTRY	(In millions of United States Dollars)										
	1990	1991	1992	1993	1994	1995	1996	1997	1998	1999	2000
CARICOM	8178.4	7872.6	8265.2	8122.2	9312.1	10467.4	10669.0	10978.4	10917.3	11944.5	14836.9
The Bahamas	1877.9	1583.3	1607.4	1651.3	1708.9	1770.3	1829.7	1839.1	1896.2	2417.3	2841.7
CARIBBEAN COMMON MARKET	6300.5	6289.3	6657.8	6470.9	7603.2	8697.1	8839.3	9139.3	9021.1	9527.2	11995.2
MDCs	4998.6	4955.1	5167.7	4944.7	6042.9	7088.8	7189.0	7405.1	7194.8	7585.7	9993.1
Guyana	252.3	294.5	492.5	534.4	592.8	640.0	733.9	754.0	700.7	683.2	680.3
Jamaica	2328.3	2270.2	2353.5	2394.3	3149.6	3555.4	3487.2	3562.2	3555.8	3483.5	4468.7
Trinidad and Tobago	2418.0	2390.4	2321.7	2016.0	2300.5	2893.4	2967.9	3088.9	2938.3	3419.0	4844.1
LDCs	1301.9	1334.2	1490.1	1526.2	1560.3	1608.3	1650.3	1734.2	1826.3	1941.5	2002.1
Belize	261.0	257.7	289.5	290.3	296.3	300.1	308.9	340.5	339.9	366.1	461.6
OECS	1040.9	1076.5	1200.6	1235.9	1264.0	1308.2	1341.4	1393.7	1486.4	1575.4	1540.5
Antigua and Barbuda	345.3	369.9	407.4	439.2	436.5	401.6	402.5	443.3	463.2	475.7	457.1
Dominica	89.3	93.1	97.7	97.8	99.9	111.6	121.7	137.2	151.5	153.5	138.3
Grenada	93.1	97.6	99.6	110.4	126.8	123.8	131.6	138.9	165.7	222.8	235.8
Montserrat	19.1	19.5	21.4	25.6	30.1	36.7	56.9	22.1	14.2	21.6	16.8
St. Kitts and Nevis	82.4	97.0	112.8	115.4	120.9	118.5	126.3	146.8	150.1	144.5	151.2
Saint Lucia	281.6	286.1	323.9	328.0	337.6	379.7	353.1	358.7	384.2	382.0	363.3
St. Vincent and the Grenadines	130.2	113.4	138.0	119.5	112.3	136.3	149.2	146.7	157.4	175.4	178.0

CARICOM
TABLE 1.11: MID-YEAR POPULATION ESTIMATES: 1990-2000

	(Thousands of Persons)										
COUNTRY	1990	1991	1992	1993	1994	1995	1996	1997	1998	1999	2000
CARICOM	5301.6	5311.1	5358.8	5429.3	5483.4	5554.1	5613.7	5655.8	5704.1	5738.5	5777.3
The Bahamas	255.1	259.0	264.0	269.0	273.0	278.0	285.0	288.9	293.7	298.4	305.0
CARIBBEAN COMMON MARKET	5046.5	5052.1	5094.8	5160.3	5210.4	5276.1	5328.7	5366.9	5410.4	5440.1	5472.3
MDCs	4334.0	4332.7	4363.6	4416.6	4455.1	4508.5	4554.7	4586.2	4618.5	4638.0	4665.7
Guyana	749.9	719.1	712.4	734.9	746.0	760.4	770.1	775.1	773.4	770.6	772.2
Jamaica	2368.9	2388.5	2411.3	2434.8	2459.4	2488.1	2515.5	2540.5	2562.5	2581.7	2599.7
Trinidad and Tobago	1215.2	1225.1	1239.9	1246.9	1249.7	1260.0	1269.1	1270.6	1282.6	1285.7	1293.8
LDCs	712.5	719.3	731.2	743.7	755.2	767.6	774.0	780.7	791.9	802.1	806.6
Belize	189.0	194.0	199.0	205.0	211.0	216.5	222.0	228.7	238.5	244.5	240.8
OECS	523.5	525.3	532.2	538.7	544.2	551.1	552.0	552.0	553.4	557.6	565.8
Antigua and Barbuda	63.8	63.9	64.7	65.5	66.4	67.6	68.6	68.9	69.9	70.9	71.8
Dominica	71.5	71.5	71.9	72.8	74.0	75.1	75.4	75.5	76.0	76.1	76.1
Grenada	94.7	95.6	96.5	97.0	97.8	98.5	98.9	99.5	100.1	100.7	101.4
Montserrat	11.9	10.9	10.9	10.5	10.4	10.6	7.9	6.1	3.6	4.8	4.9
St. Kitts and Nevis	41.9	41.0	42.7	43.5	43.1	43.5	42.3	40.7	40.1	39.5	44.5
Saint Lucia	134.1	136.0	138.2	140.0	142.7	145.2	147.7	149.6	152.0	153.7	155.0
St. Vincent and the Grenadines	105.7	106.5	107.4	109.4	109.9	110.6	111.2	111.7	111.8	112.0	112.0

PART 2

EXTERNAL PUBLIC DEBT AGGREGATES AND INDICATORS, BY MEMBER STATES 1990 – 2000

ANTIGUA AND BARBUDA
TABLE 2.1: SUMMARY OF EXTERNAL PUBLIC DEBT OPERATIONS: 1990-2000

(in millions of United States Dollars)

ITEMS	1990	1991	1992	1993	1994	1995	1996	1997	1998	1999	2000
Disbursed Debt at the Beginning of Period	289.0	296.1	291.1	280.4	264.1	277.3	286.4	275.5	347.8	397.6	420.2
Net Borrowing	-7.8	3.7	-4.5	-5.2	2.9	-6.0	-0.7	0.6	12.8	10.9	1.5
Disbursements	3.3	9.6	1.8	0.2	9.4	3.7	4.2	6.7	18.1	19.4	20.9
Amortisation	11.1	6.0	6.2	5.3	6.4	9.8	4.9	6.1	5.3	8.5	19.4
Valuation and other Adjustments	14.9	-8.7	-6.3	-11.1	10.3	15.2	-10.2	71.7	37.0	11.6	5.6
Disbursed Debt Outstanding at the end of Period (e.o.p)	296.1	291.1	280.4	264.1	277.3	286.4	275.5	347.8	397.6	420.2	427.3
Debt Service Payments	13.4	8.2	8.5	7.9	8.7	14.3	9.2	10.1	13.7	13.8	26.1
Amortisation	11.1	6.0	6.2	5.3	6.4	9.8	4.9	6.1	5.3	8.5	19.4
Interest Payments	2.3	2.2	2.3	2.5	2.3	4.5	4.4	4.0	8.3	5.3	6.7
MAJOR AGGREGATES											
Mid-Year Population ('000s of Persons)	63.8	63.9	64.7	65.5	66.4	67.6	68.6	68.9	69.9	70.9	71.8
Exports of Goods (XG)	33.4	55.2	75.0	62.1	45.2	53.1	38.9	38.8	37.4	36.8	42.3
Exports of Goods and Services (XGS)	345.3	369.9	407.4	439.2	436.5	401.6	402.5	443.3	463.2	475.7	457.1
GDP at Market Prices	391.5	410.4	423.8	456.5	500.1	493.6	540.4	581.0	620.1	651.1	661.7
Central Govt. Current Revenue (CGCR)	85.4	84.7	90.9	94.4	104.1	104.7	119.7	121.3	126.8	128.6	120.8
International Reserves (IR)	1.3	31.9	35.0	40.5	62.4	90.4	43.1	7.8	18.1	20.3	-27.2
DEBT INDICATORS (%)											
Disbursed Debt Outstanding at e.o.p.) per capita (\$US)	4642.6	4556.6	4334.3	4031.5	4174.9	4236.5	4015.2	5048.3	5691.3	5930.1	5952.0
Disbursed Debt Outstanding at e.o.p./GDP	75.6	70.9	66.2	57.8	55.4	58.0	51.0	59.9	64.1	64.5	64.6
Disbursed Debt Outstanding at e.o.p./XG	885.9	527.3	373.7	425.4	613.0	538.9	708.6	896.4	1063.7	1140.7	1010.8
Disbursed Debt Outstanding at e.o.p./XGS	85.8	78.7	68.8	60.1	63.5	71.3	68.4	78.5	85.8	88.3	93.5
Debt Service Payments/GDP	3.4	2.0	2.0	1.7	1.7	2.9	1.7	1.7	2.2	2.1	3.9
Debt Service Payments/XG	40.2	14.8	11.4	12.7	19.3	26.9	23.7	26.0	36.5	37.6	61.8
Debt Service Payments/XGS (Debt Service Ratio)	3.9	2.2	2.1	1.8	2.0	3.6	2.3	2.3	2.9	2.9	5.7
Debt Service Payments/CGCR	15.7	9.6	9.4	8.3	8.4	13.7	7.7	8.3	10.8	10.8	21.6
Debt Service Payments/Disbursements	405.6	84.7	480.3	4734.3	93.0	383.3	222.3	149.6	75.4	71.2	124.9
Debt Service Payments/IR	1021.7	25.6	24.4	19.4	14.0	15.8	21.4	129.9	75.3	68.1	--
Interest Payments/GDP	0.6	0.5	0.5	0.6	0.5	0.9	0.8	0.7	1.3	0.8	1.0
Interest Payments/XG	7.0	4.0	3.1	4.1	5.0	8.6	11.3	10.2	22.3	14.5	15.9
Interest Payments/XGS	0.7	0.6	0.6	0.6	0.5	1.1	1.1	0.9	1.8	1.1	1.5
Growth of the External Public Debt	...	-1.7	-3.7	-5.8	5.0	3.3	-3.8	26.2	14.3	5.7	1.7

ANTIGUA AND BARBUDA
TABLE 2.2: EXTERNAL PUBLIC DEBT BY CREDITORS: 1990-2000

(in millions of United States Dollars)											
ITEMS	1990	1991	1992	1993	1994	1995	1996	1997	1998	1999	2000
Official Creditors	35.6	35.2	33.9	32.2	32.7	31.4	32.9	35.7	193.2	217.1	221.2
Bilateral	22.5	22.6	22.8	21.9	21.3	22.2	25.4	28.8	186.1	210.0	214.4
Multilateral	13.0	12.6	11.0	10.4	11.4	9.2	7.4	6.9	7.1	7.0	6.9
Private Creditors	260.6	255.8	246.5	231.8	244.6	255.0	242.6	312.1	204.5	203.1	206.1
Commercial Banks	75.3	70.6	66.5	62.8	64.1	65.5	62.4	58.4	37.2	31.8	25.7
Suppliers Credit	46.4	42.4	38.4	34.4	30.4	28.4	28.3	1.6	1.6	1.1	7.7
Other Creditors	138.9	142.9	141.6	134.6	150.1	161.1	151.9	252.1	165.6	170.2	172.7
Total External Public Debt	296.1	291.1	280.4	264.1	277.3	286.4	275.5	347.8	397.6	420.2	427.3

ANTIGUA AND BARBUDA
TABLE 2.2b: EXTERNAL PUBLIC DEBT BY CREDITORS: 1990-2000 (Percentage Distribution)

ITEMS	1990	1991	1992	1993	1994	1995	1996	1997	1998	1999	2000
Official Creditors	12.0	12.1	12.1	12.2	11.8	11.0	11.9	10.3	48.6	51.7	51.8
Bilateral	7.6	7.8	8.1	8.3	7.7	7.8	9.2	8.3	46.8	50.0	50.2
Multilateral	4.4	4.3	3.9	3.9	4.1	3.2	2.7	2.0	1.8	1.7	1.6
Private Creditors	88.0	87.9	87.9	87.8	88.2	89.0	88.1	89.7	51.4	48.3	48.2
Commercial Banks	25.4	24.2	23.7	23.8	23.1	22.9	22.7	16.8	9.4	7.6	6.0
Suppliers Credit	15.7	14.6	13.7	13.0	11.0	9.9	10.3	0.5	0.4	0.3	1.8
Other Creditors	46.9	49.1	50.5	51.0	54.1	56.2	55.1	72.5	41.7	40.5	40.4
Total External Public Debt	100	100.0	100.0	100.0	100.0	100.0	100.0	100.0	100.0	100.0	100.0

FIGURE 2.1: ANTIGUA AND BARBUDA DISBURSED DEBT OUTSTANDING AS A PERCENTAGE OF ITS XGS AND GDP: 1990-2000

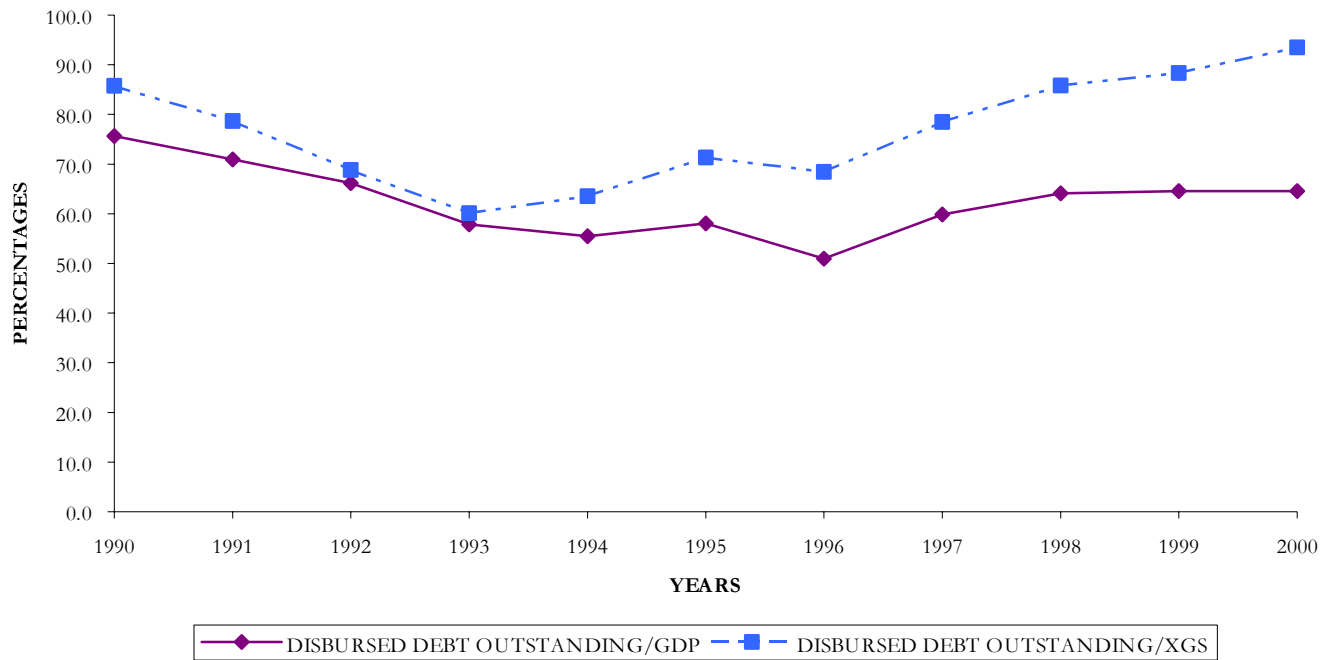
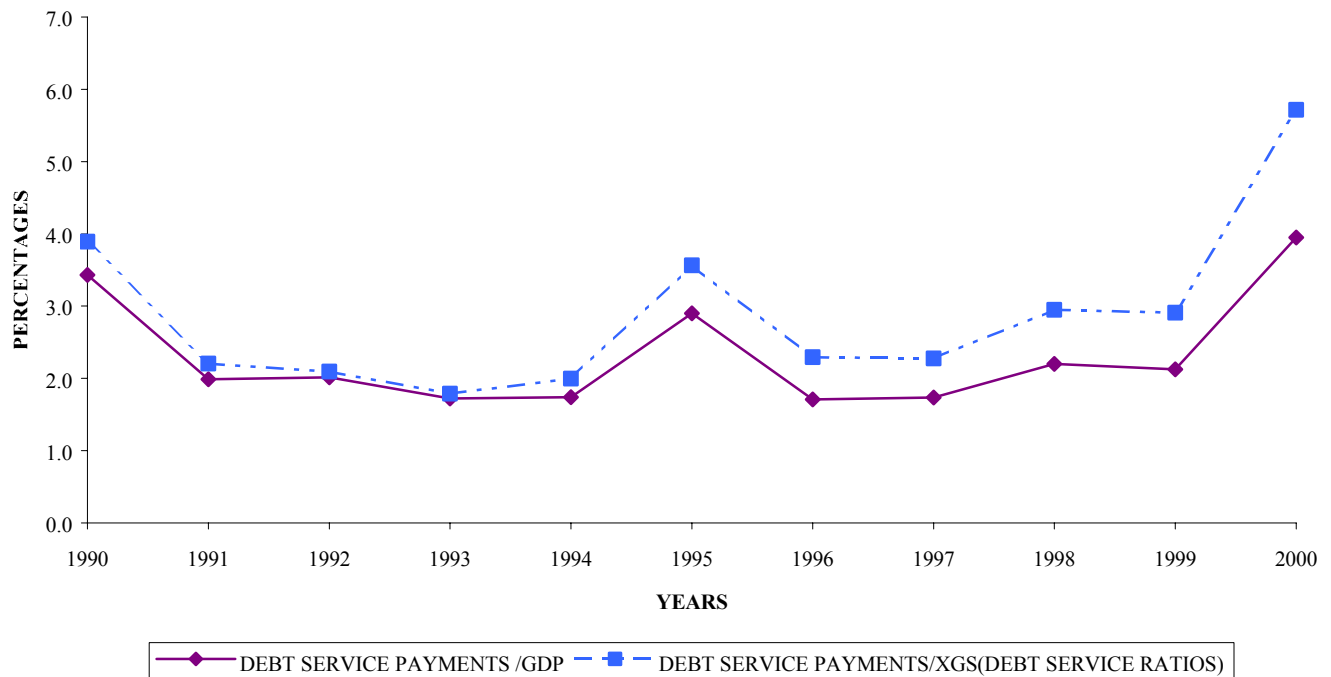


FIGURE 2.2 ANTIGUA AND BARBUDA'S DEBT SERVICE PAYMENTS AS A PERCENTAGE OF ITS XGS AND GDP



THE BAHAMAS
TABLE 3.1: SUMMARY OF EXTERNAL PUBLIC DEBT OPERATIONS: 1990-2000

	(in millions of United States Dollars)										
ITEMS	1990	1991	1992	1993	1994	1995	1996	1997	1998	1999	2000
Disbursed Debt at the Beginning of Period	221.0	196.1	342.2	377.6	359.7	334.6	304.4	286.2	336.1	349.9	368.1
Net Borrowing	45.2	146.1	35.5	-18.0	-27.1	-30.2	-18.3	49.9	13.8	18.2	-0.1
Disbursements	71.8	197.0	72.7	27.3	20.9	14.0	31.0	106.6	43.8	47.9	26.7
Amortisation	26.6	50.9	37.2	45.3	48.0	44.1	49.3	56.7	30.0	29.8	26.8
Valuation and other Adjustments	-	-	-	-	2.0	-	-	-	-	-	-
Disbursed Debt Outstanding at the end of Period (e.o.p)	266.2	342.2	377.6	359.7	334.6	304.4	286.2	336.1	349.9	368.1	367.9
Debt Service Payments	45.2	73.2	57.2	68.9	70.9	70.0	79.4	79.3	56.5	51.0	50.4
Amortisation	26.6	50.9	37.2	45.3	48.0	44.1	49.3	56.7	30.0	29.8	26.8
Interest Payments	18.6	22.3	19.9	23.6	27.0	25.9	30.2	22.6	26.5	21.3	23.5
MAJOR AGGREGATES											
Mid-Year Population ('000s of Persons)	255.1	259.0	264.0	269.0	273.0	278.0	285.0	288.9	293.7	298.4	305.0
Exports of Goods (XG)	215.5	229.4	217.7	192.2	198.5	225.3	251.5	246.2	362.9	523.2	805.3
Exports of Goods and Services (XGS)	1877.9	1583.3	1607.4	1651.3	1708.9	1770.3	1829.7	1839.1	1896.2	2417.3	2841.7
GDP at Market Prices	3134.2	3090.0	3195.5	3323.0	3425.0	3504.0	3742.0	3940.0	4190.0	4573.0	4920.0
Central Govt. Current Revenue (CGCR)	497.8	490.4	534.6	537.1	618.2	651.2	686.4	729.5	761.8	869.1	937.2
International Reserves (IR)	159.5	173.8	146.0	164.3	173.6	170.6	163.0	219.5	338.8	404.4	342.6
DEBT INDICATORS (%)											
Disbursed Debt Outstanding at e.o.p.) per capita (\$US)	1043.5	1321.1	1430.4	1337.0	1225.5	1095.0	1004.0	1163.4	1191.3	1233.4	1206.3
Disbursed Debt Outstanding at e.o.p./GDP	8.5	11.1	11.8	10.8	9.8	8.7	7.6	8.5	8.3	8.0	7.5
Disbursed Debt Outstanding at e.o.p./XG	123.5	149.2	173.5	187.1	168.5	135.1	113.8	136.5	96.4	70.3	45.7
Disbursed Debt Outstanding at e.o.p./XGS	14.2	21.6	23.5	21.8	19.6	17.2	15.6	18.3	18.5	15.2	12.9
Debt Service Payments/GDP	1.4	2.4	1.8	2.1	2.2	2.0	2.1	2.0	1.3	1.1	1.0
Debt Service Payments/XG	21.0	31.9	26.3	35.8	37.8	31.1	31.6	32.2	15.6	9.8	6.3
Debt Service Payments/XGS (Debt Service Ratio)	2.4	4.6	3.6	4.2	4.4	4.0	4.3	4.3	3.0	2.1	1.8
Debt Service Payments/CGCR	9.1	14.9	10.7	12.8	12.1	10.8	11.6	10.9	7.4	5.9	5.4
Debt Service Payments/Disbursements	63.0	37.2	78.6	252.1	359.2	501.1	256.1	74.3	129.1	106.4	188.5
Debt Service Payments/IR	28.3	42.1	39.2	41.9	43.2	41.1	48.7	36.1	16.7	12.6	14.7
Interest Payments/GDP	0.6	0.7	0.6	0.7	0.8	0.7	0.8	0.6	0.6	0.5	0.5
Interest Payments/XG	8.6	9.7	9.2	12.3	13.6	11.5	12.0	9.2	7.3	4.1	2.9
Interest Payments/XGS	1.0	1.4	1.2	1.4	1.6	1.5	1.6	1.2	1.4	0.9	0.8
Growth of the External Public Debt	20.5	28.5	10.4	-4.8	-7.0	-9.0	-6.0	17.4	4.1	5.2	0.0

Data from 1991 is a revised series presented by The Bahamas. Data for 1990 is not revised hence Disbursed Debt Outstanding at end of Period in 1990 is not equal to Disbursed Debt at the Beginning of Period for 1991.

In 1994, there was a transfer of \$US Mn 4.1 to internal currency. Therefore figures for amortisation and Interest Payments do not add up to Debt Service Payment.

THE BAHAMAS
TABLE 3.2: EXTERNAL PUBLIC DEBT BY CREDITORS: 1990-2000

(in millions of United States Dollars)											
ITEMS	1990	1991	1992	1993	1994	1995	1996	1997	1998	1999	2000
Official Creditors	62.4	175.0	207.6	212.5	225.0	220.9	219.5	223.3	246.2	251.5	255.7
Bilateral	0.0	54.0	50.9	47.3	53.5	49.4	44.7	32.7	29.1	25.4	21.8
Multilateral	62.4	121.0	156.7	165.2	171.5	171.5	174.8	190.6	217.1	226.1	233.9
Private Creditors	203.8	167.1	170.0	147.2	109.5	83.5	66.7	112.8	103.7	116.5	112.2
Commercial Banks	202.2	165.5	162.4	126.7	90.9	65.3	49.0	55.5	46.8	64.0	60.6
Other/Suppliers Credit	1.6	1.6	7.6	20.5	18.6	18.2	17.7	57.3	56.9	52.5	51.6
Total External Public Debt	266.2	342.1	377.6	359.7	334.5	304.4	286.2	336.1	349.9	368.0	367.9

Data for 1990 is not revised. Data from 1991 is a revised series presented by The Bahamas.

THE BAHAMAS
TABLE 3.2b: EXTERNAL PUBLIC DEBT BY CREDITORS: 1990-2000 (Percentage Distribution)

ITEMS	1990	1991	1992	1993	1994	1995	1996	1997	1998	1999	2000
Official Creditors	12.0	51.2	55.0	59.1	67.3	72.6	76.7	66.4	70.4	68.3	69.5
Bilateral	7.6	15.8	13.5	13.1	16.0	16.2	15.6	9.7	8.3	6.9	5.9
Multilateral	4.4	35.4	41.5	45.9	51.3	56.3	61.1	56.7	62.0	61.4	63.6
Private Creditors	88.0	48.8	45.0	40.9	32.7	27.4	23.3	33.6	29.6	31.7	30.5
Commercial Banks	25.4	48.4	43.0	35.2	27.2	21.5	17.1	16.5	13.4	17.4	16.5
Suppliers Credit	15.7	0.5	2.0	5.7	5.6	6.0	6.2	17.0	16.3	14.3	14.0
Total External Public Debt	100	100.0	100.0	100.0	100.0	100.0	100.0	100.0	100.0	100.0	100.0

Data for 1990 was not revised. Data from 1991 is a revised series presented by The Bahamas.

FIGURE 3.1: THE BAHAMAS' DISBURSED DEBT OUTSTANDING AS A PERCENTAGE OF ITS XGS AND GDP: 1990-2000

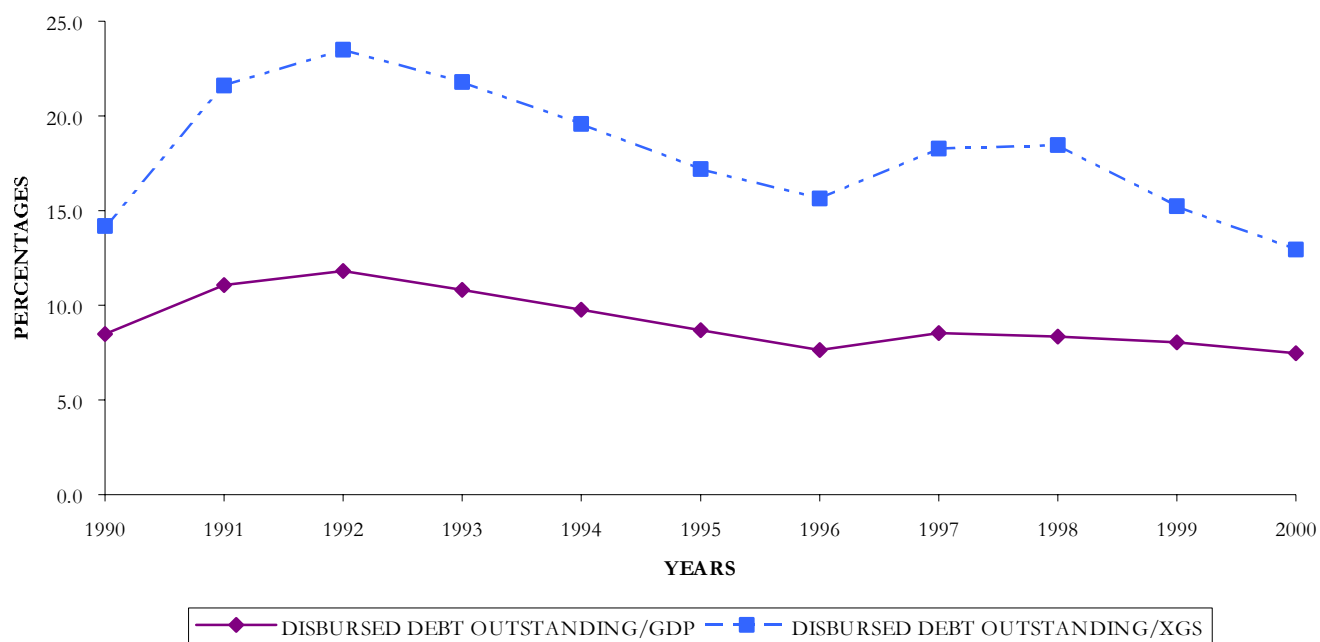
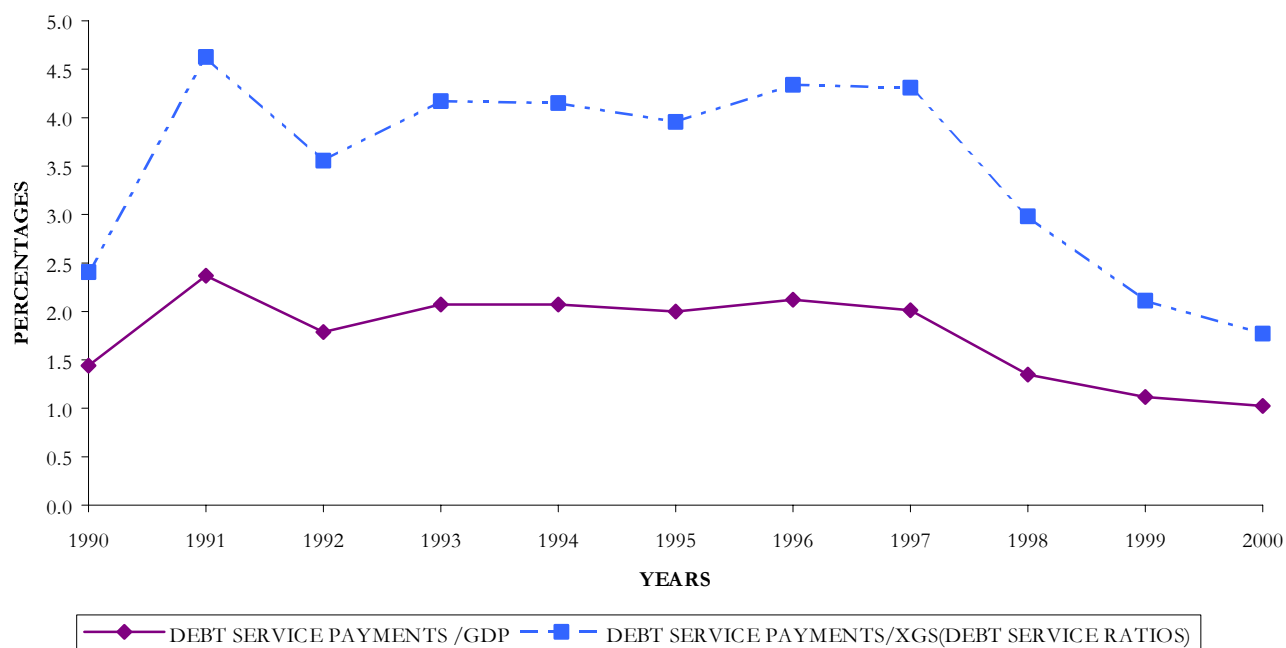


FIGURE 3.2 THE BAHAMAS' DEBT SERVICE PAYMENT AS A PERCENTAGE OF ITS XGS AND GDP: 1990-2000



BELIZE
TABLE 4.1: SUMMARY OF EXTERNAL PUBLIC DEBT OPERATIONS: 1990-2000

	(in millions of United States Dollars)										
ITEMS	1990	1991	1992	1993	1994	1995	1996	1997	1998	1999	2000
Disbursed Debt at the Beginning of Period	127.9	132.8	142.9	149.9	167.9	183.9	185.7	221.4	243.4	263.1	254.5
Net Borrowing	1.6	17.9	14.9	19.7	8.9	-0.8	35.5	27.7	18.8	26.4	170.1
Disbursements	13.2	28.4	24.0	29.9	26.1	21.8	57.6	48.1	39.5	45.7	204.7
Amortisation	11.6	10.6	9.0	10.2	17.2	22.6	22.1	20.4	20.7	19.3	34.7
Valuation Adjustment	3.3	-7.8	-7.9	-1.7	7.2	2.6	0.2	-5.7	0.9	-2.9	-0.9
Disbursed Debt Outstanding at the end of Period (e.o.p)	132.8	142.9	149.9	167.9	183.9	185.7	221.4	243.4	263.1	254.5	423.7
Debt Service Payments	16.8	15.3	13.6	15.7	23.9	30.8	30.3	30.6	34.0	33.7	54.2
Amortisation	11.6	10.6	9.0	10.2	17.2	22.6	22.1	20.4	20.7	19.3	34.7
Interest Payments	5.2	4.7	4.6	5.5	6.7	8.2	8.2	10.2	13.3	14.4	19.6
MAJOR AGGREGATES											
Mid-Year Population ('000s of Persons)	189.0	194.0	199.0	205.0	211.0	216.5	222.0	228.7	238.5	244.5	240.8
Exports of Goods (XG)	129.2	126.1	140.6	134.0	156.3	164.3	171.3	182.8	170.8	263.6	288.5
Exports of Goods and Services (XGS)	261.0	257.7	289.5	290.3	296.3	300.1	308.9	340.5	339.9	366.1	461.6
GDP at Market Prices	405.4	432.6	484.5	530.3	552.0	587.2	605.7	648.6	668.7	742.8	820.6
Central Govt. Current Revenue (CGCR)	102.7	112.5	115.9	124.7	132.5	130.0	138.3	141.5	147.3	163.6	174.9
International Reserves (IR)	71.6	54.3	55.4	35.9	31.6	35.0	56.5	59.3	43.9	70.1	122.0
DEBT INDICATORS (%)											
Disbursed Debt Outstanding at e.o.p. per capita (\$US)	702.6	736.6	753.3	819.0	871.6	857.7	997.2	1064.3	1103.1	1040.9	1759.6
Disbursed Debt Outstanding at e.o.p./GDP	32.8	33.0	30.9	31.7	33.3	31.6	36.6	37.5	39.3	34.3	51.6
Disbursed Debt Outstanding at e.o.p./XG	102.8	113.3	106.6	125.3	117.7	113.0	129.2	133.2	154.0	96.5	146.9
Disbursed Debt Outstanding at e.o.p./XGS	50.9	55.5	51.8	57.8	62.1	61.9	71.7	71.5	77.4	69.5	91.8
Debt Service Payments/GDP	4.1	3.5	2.8	3.0	4.3	5.2	5.0	4.7	5.1	4.5	6.6
Debt Service Payments/XG	13.0	12.1	9.7	11.7	15.3	18.7	17.7	16.7	19.9	12.8	18.8
Debt Service Payments/XGS (Debt Service Ratio)	6.4	5.9	4.7	5.4	8.1	10.3	9.8	9.0	10.0	9.2	11.7
Debt Service Payments/CGCR	16.4	13.6	11.7	12.6	18.0	23.7	21.9	21.6	23.1	20.6	31.0
Debt Service Payments/Disbursements	127.3	53.9	56.7	52.5	91.6	141.3	52.6	63.6	86.1	73.7	26.5
Debt Service Payments/IR	23.5	28.2	24.5	43.7	75.6	88.0	53.6	51.6	77.4	48.1	44.5
Interest Payments/GDP	1.3	1.1	0.9	1.0	1.2	1.4	1.4	1.6	2.0	1.9	2.4
Interest Payments/XG	4.0	3.7	3.3	4.1	4.3	5.0	4.8	5.6	7.8	5.5	6.8
Interest Payments/XGS	2.0	1.8	1.6	1.9	2.3	2.7	2.7	3.0	3.9	3.9	4.2
Growth of the External Public Debt	...	7.6	4.9	12.0	9.5	1.0	19.2	9.9	8.1	-3.3	66.5

Effective October 1999 Belize Electricity Limited (BEL) loans were reclassified as private sector debt following its full privatisation (the Outstanding balance is US\$30.9mn and a small loan of 1.066mn).

Effective March 2001, Water & Sewerage Authority (WASA) loans were re-classified as private sector debt as a result of its full privatisation. The Outstanding debt is US\$14.2mn.

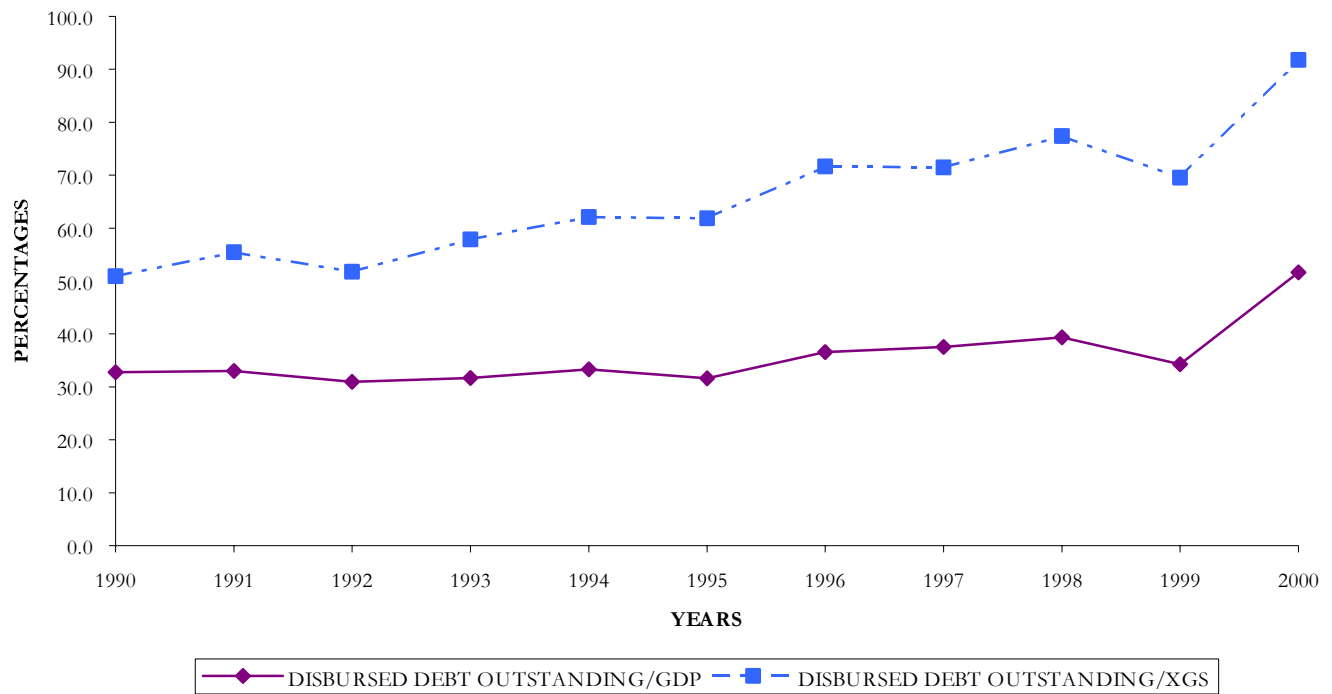
BELIZE
TABLE 4.2: EXTERNAL PUBLIC DEBT BY CREDITORS: 1990-2000

ITEMS	(in millions of United States Dollars)										
	1990	1991	1992	1993	1994	1995	1996	1997	1998	1999	2000
Official Creditors	116.7	124.7	121.9	128.3	145.2	145.4	177.9	191.9	205.7	198.2	217.4
Bilateral	54.1	60.0	59.3	66.2	70.4	64.7	93.5	90.8	89.3	102.5	106.0
Multilateral	62.6	64.7	62.6	62.1	74.8	80.7	84.4	101.1	116.4	95.8	111.4
Private Creditors	16.2	18.2	28.0	39.7	38.9	40.3	43.5	51.4	57.5	56.3	206.3
Commercial Banks	14.2	17.2	17.0	17.9	15.8	14.5	23.7	37.3	46.9	49.4	184.8
Suppliers Credit	2.0	1.0	11.0	21.8	23.1	25.8	19.8	14.1	10.6	6.9	21.5
Total External Public Debt	132.9	142.9	149.9	168.0	184.1	185.7	221.4	243.3	263.2	254.5	423.7

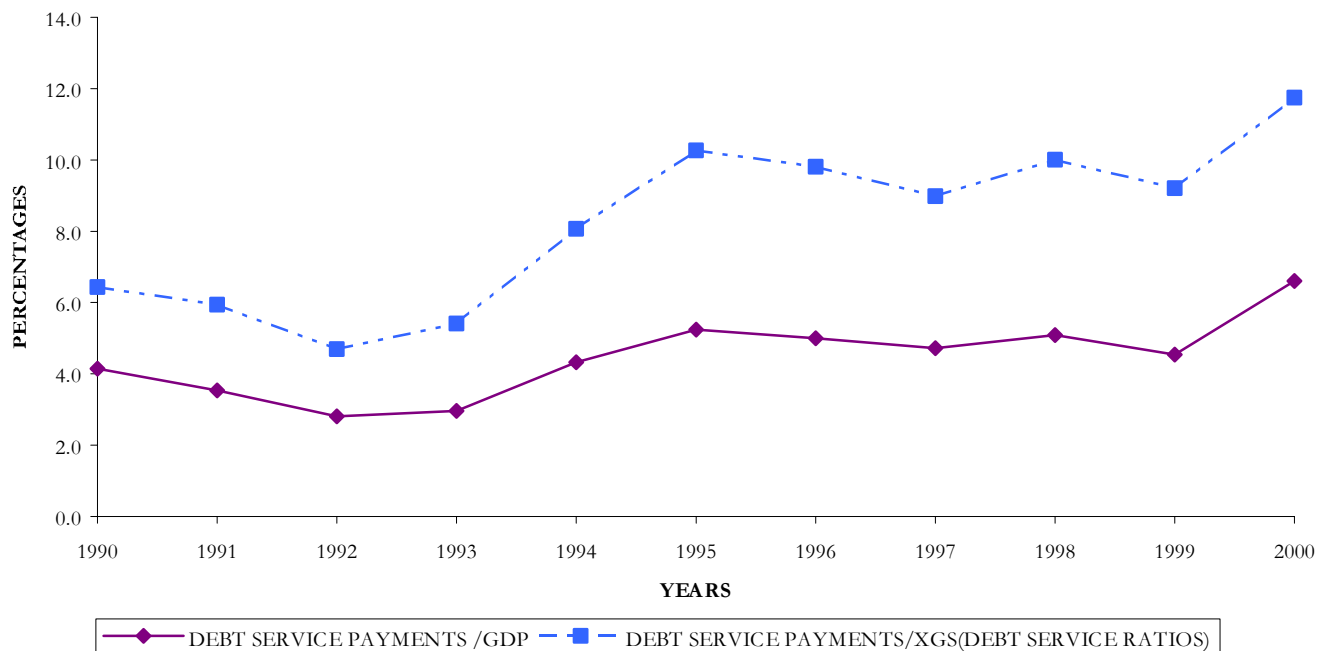
BELIZE
TABLE 4.2b: EXTERNAL PUBLIC DEBT BY CREDITORS: 1990-2000 (Percentage Distribution)

ITEMS											
	1990	1991	1992	1993	1994	1995	1996	1997	1998	1999	2000
Official Creditors	87.8	87.3	81.3	76.4	78.9	78.3	80.1	78.9	78.1	77.9	51.3
Bilateral	40.7	42.0	39.6	39.4	38.2	34.8	42.2	37.3	33.9	40.3	25.0
Multilateral	47.1	45.3	41.8	37.0	40.6	43.5	38.1	41.5	44.2	37.6	26.3
Private Creditors	12.2	12.7	18.7	23.6	21.1	21.7	19.6	21.1	21.9	22.1	48.7
Commercial Banks	10.7	12.0	11.3	10.7	8.6	7.8	10.7	15.3	17.8	19.4	43.6
Suppliers Credit	1.5	0.7	7.3	13.0	12.5	13.9	8.9	5.8	4.0	2.7	5.1
Total External Public Debt	100.0	100.0	100.0	100.0	100.0	100.0	100.0	100.0	100.0	100.0	100.0

**FIGURE 4.1: BELIZE'S DISBURSED DEBT OUTSTANDING AS
A PERCENTAGE OF ITS XGS AND GDP: 1990-2000**



**FIGURE 4.2 BELIZE'S DEBT SERVICE PAYMENTS AS
A PERCENTAGE OF ITS XGS AND GDP: 1990-2000**



DOMINICA
TABLE 5.1: SUMMARY OF EXTERNAL PUBLIC DEBT OPERATIONS: 1990-2000

(in millions of United States Dollars)

ITEMS	1990	1991	1992	1993	1994	1995	1996	1997	1998	1999	2000
Disbursed Debt at the Beginning of Period	71.1	85.8	93.9	97.0	94.1	98.7	103.1	102.6	89.0	90.9	91.7
Net Borrowing	8.5	9.9	6.1	-0.2	1.1	2.2	0.0	1.0	1.5	2.1	9.8
Disbursements	11.9	13.0	10.0	4.3	6.1	7.4	6.6	9.0	7.1	7.3	14.3
Amortisation	3.4	3.1	3.9	4.5	4.9	5.2	6.6	8.1	5.6	5.2	4.5
Valuation and other Adjustments	6.2	-1.8	-3.1	-2.6	3.5	2.2	-0.6	-14.5	0.4	-1.2	-2.4
Disbursed Debt Outstanding at the end of Period (e.o.p)	85.8	93.9	97.0	94.1	98.7	103.1	102.6	89.0	90.9	91.7	99.2
Debt Service Payments	5.2	5.1	6.1	6.7	7.2	7.4	8.9	10.7	8.0	8.0	7.1
Amortisation	3.4	3.1	3.9	4.5	4.9	5.2	6.6	8.1	5.6	5.2	4.5
Interest Payments	1.8	1.9	2.2	2.1	2.3	2.2	2.3	2.6	2.4	2.7	2.6
Other Payments	0.0	0.0	0.0	0.0	0.0	0.0	0.0	0.0	0.0
MAJOR AGGREGATES											
Mid-Year Population ('000s of Persons)	71.5	71.5	71.9	72.8	74.0	75.1	75.4	75.5	76.0	76.1	76.1
Exports of Goods (XG)	56.1	56.5	55.3	49.3	48.3	50.3	52.8	53.8	63.1	54.6	50.3
Exports of Goods and Services (XGS)	89.3	93.1	97.7	97.8	99.9	111.6	121.7	137.2	151.5	153.5	138.3
GDP at Market Prices	166.3	180.4	191.8	200.4	215.5	219.1	236.3	245.1	259.5	267.7	268.3
Central Govt. Current Revenue (CGCR)	46.8	50.3	51.7	51.5	50.7	57.4	64.4	69.9	75.9	74.3	79.3
International Reserves (IR)	16.9	17.5	24.2	13.2	2.6	16.1	26.6	24.0	33.8	46.5	24.6
DEBT INDICATORS (%)											
Disbursed Debt Outstanding at e.o.p. per capita (\$US)	1200.2	1314.5	1349.4	1293.5	1334.7	1373.7	1360.2	1178.3	1196.5	1206.3	1302.3
Disbursed Debt Outstanding at e.o.p./GDP	51.6	52.1	50.6	47.0	45.8	47.1	43.4	36.3	35.0	34.3	37.0
Disbursed Debt Outstanding at e.o.p./XG	153.1	166.3	175.3	191.0	204.3	205.2	194.4	165.5	144.1	168.0	197.2
Disbursed Debt Outstanding at e.o.p./XGS	96.1	100.9	99.3	96.2	98.8	92.4	84.3	64.9	60.0	59.8	71.7
Debt Service Payments/GDP	3.1	2.8	3.2	3.3	3.4	3.4	3.8	4.4	3.1	3.0	2.6
Debt Service Payments/XG	9.3	9.0	11.0	13.5	15.0	14.8	17.0	19.9	12.8	14.6	14.1
Debt Service Payments/XGS (Debt Service Ratio)	5.8	5.5	6.2	6.8	7.3	6.7	7.3	7.8	5.3	5.2	5.1
Debt Service Payments/CGCR	11.1	10.1	11.7	12.9	14.3	13.0	13.9	15.3	10.6	10.7	8.9
Debt Service Payments/Disbursements	43.6	38.9	60.8	155.6	119.5	100.3	135.5	118.5	113.7	108.9	49.3
Debt Service Payments/IR	30.8	29.1	25.0	50.2	282.0	46.2	33.6	44.7	23.8	17.2	28.8
Interest Payments/GDP	1.1	1.1	1.1	1.0	1.1	1.0	1.0	1.1	0.9	1.0	1.0
Interest Payments/XG	3.2	3.4	3.9	4.3	4.7	4.4	4.4	4.9	3.9	5.0	5.1
Interest Payments/XGS	2.0	2.1	2.2	2.1	2.3	2.0	1.9	1.9	1.6	1.8	1.9
Growth of the External Public Debt	...	9.5	3.2	-2.9	4.9	4.5	-0.6	-13.2	2.1	0.9	8.1

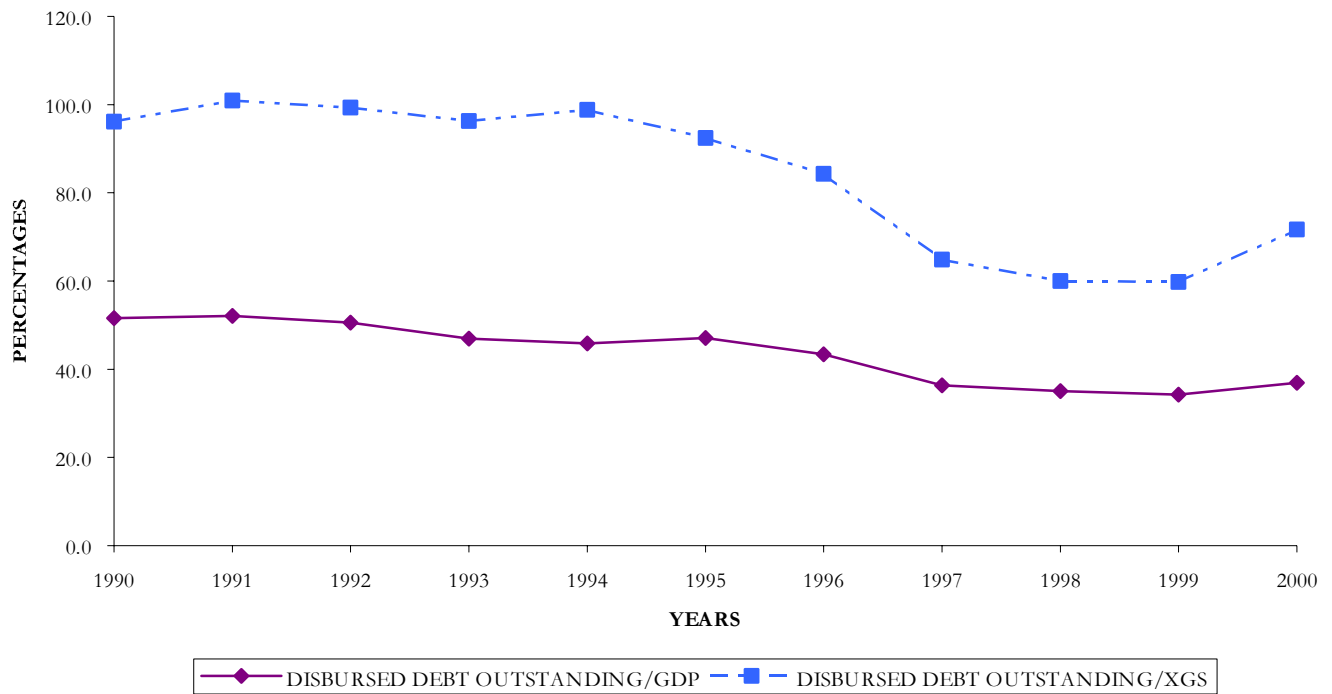
DOMINICA
TABLE 5.2: EXTERNAL PUBLIC DEBT BY CREDITORS: 1990-2000

ITEMS	(in millions of United States Dollars)										
	1990	1991	1992	1993	1994	1995	1996	1997	1998	1999	2000
Official Creditors	85.6	93.8	96.8	94.0	98.6	103.1	102.5	88.8	90.9	91.7	99.2
Bilateral	23.8	27.9	31.0	29.5	32.6	36.6	37.4	27.2	27.0	24.3	25.4
Multilateral	61.8	65.9	65.8	64.5	66.1	66.5	65.0	61.7	63.9	67.4	73.8
Private Creditors	0.2	0.2	0.2	0.1	0.1	0.1	0.1	0.2	0.0	0.0	0.0
Commercial Banks	-	-	-	-	-	-	-	-	-	-	-
Suppliers Credit	-	-	-	-	-	-	-	-	-	-	-
Other Creditors	0.2	0.2	0.2	0.1	0.1	0.1	0.1	0.2	0.0	-	-
Total External Public Debt	85.8	93.9	97.0	94.1	98.7	103.1	102.6	89.0	90.9	91.7	99.2

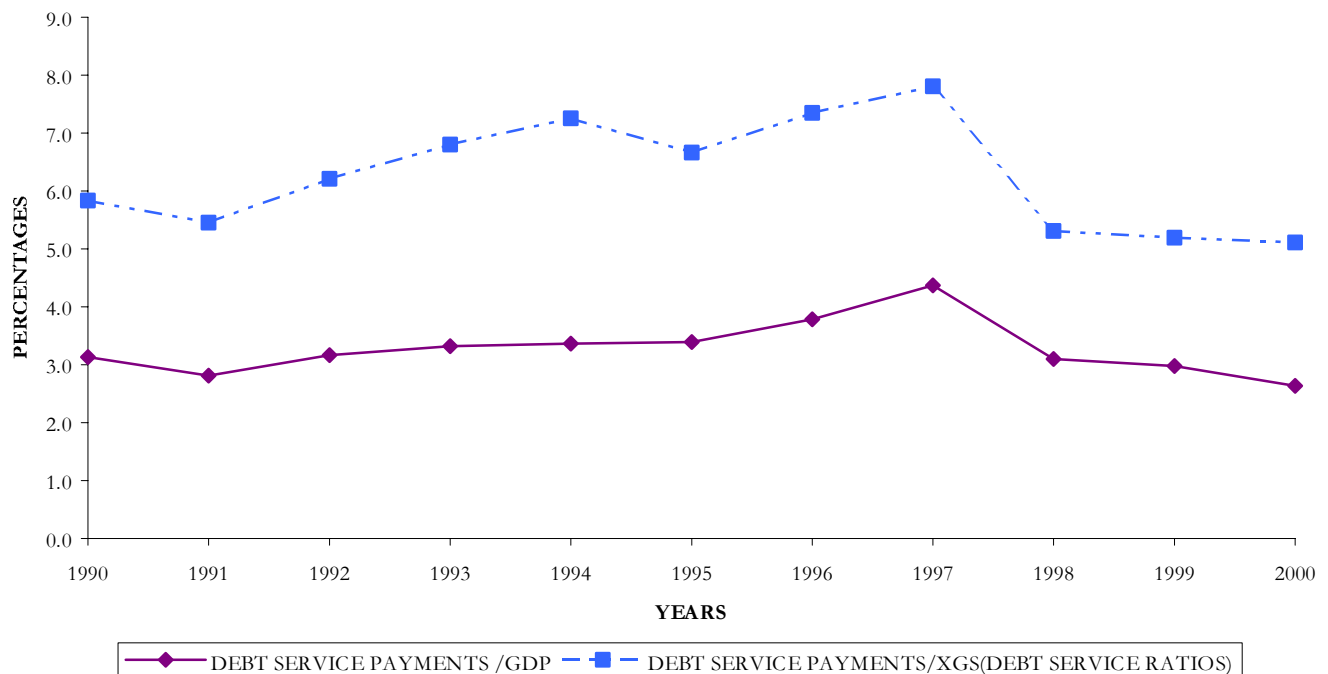
DOMINICA
TABLE 5.2b: EXTERNAL PUBLIC DEBT BY CREDITORS: 1990-2000 (Percentage Distribution)

ITEMS											
	1990	1991	1992	1993	1994	1995	1996	1997	1998	1999	2000
Official Creditors	99.8	99.8	99.8	99.9	99.9	99.9	99.9	99.8	100.0	100.0	100.0
Bilateral	27.7	29.6	32.0	31.3	33.0	35.4	36.5	30.5	29.7	26.5	25.6
Multilateral	72.0	70.2	67.9	68.5	66.9	64.5	63.4	69.3	70.3	73.5	74.4
Private Creditors	0.2	0.2	0.2	0.1	0.1	0.1	0.1	0.2	0.0	0.0	0.0
Commercial Banks	-	-	-	-	-	-	-	0.0	0.0	0.0	0.0
Suppliers Credit	-	-	-	-	-	-	-	0.0	0.0	0.0	0.0
Other Creditors	0.2	0.2	0.2	0.1	0.1	0.1	0.1	0.2	0.0	0.0	0.0
Total External Public Debt	100.0	100.0	100.0	100.0	100.0	100.0	100.0	100.0	100.0	100.0	100.0

**FIGURE 5.1: DOMINICA'S DISBURSED DEBT OUTSTANDING AS
A PERCENTAGE OF ITS XGS AND GDP: 1990-2000**



**FIGURE 5.2 DOMINICA'S DEBT SERVICE PAYMENTS AS
A PERCENTAGE OF ITS XGS AND GDP**



GRENADA

TABLE 6.1: SUMMARY OF EXTERNAL PUBLIC DEBT OPERATIONS: 1990-2000

	(in millions of United States Dollars)										
ITEMS	1990	1991	1992	1993	1994	1995	1996	1997	1998	1999	2000
Disbursed Debt at the Beginning of Period	72.3	88.6	87.5	85.0	81.5	88.6	88.4	90.6	93.1	96.2	105.6
Net Borrowing	12.8	1.5	1.7	-2.0	5.9	-0.6	1.8	9.7	3.5	9.3	25.5
Disbursements	15.1	4.5	6.4	2.9	10.5	6.1	8.1	16.0	9.2	15.9	32.7
Amortisation	2.3	2.9	4.7	4.9	4.6	6.7	6.3	6.3	5.7	6.6	7.2
Valuation and other Adjustments	3.5	-2.7	-4.3	-1.5	1.2	0.4	0.4	-7.2	-0.5	0.1	-1.9
Disbursed Debt Outstanding at the end of Period (e.o.p)	88.6	87.5	85.0	81.5	88.6	88.4	90.6	93.1	96.2	105.6	129.2
Debt Service Payments	4.1	4.9	6.8	7.1	6.8	8.7	8.6	8.4	8.3	9.4	10.3
Amortisation	2.3	2.9	4.7	4.9	4.6	6.7	6.3	6.3	5.7	6.6	7.2
Interest Payments	1.8	2.0	2.1	2.2	2.1	2.0	2.3	2.2	2.6	2.9	3.1
Other Payments	-	0.0	0.0	0.0	-	-	0.1	-	-	0.0	-
MAJOR AGGREGATES											
Mid-Year Population ('000s of Persons)	94.7	95.6	96.5	97.0	97.8	98.5	98.9	99.5	100.1	100.7	101.4
Exports of Goods (XG)	29.3	25.7	23.5	22.7	25.2	24.6	24.9	32.8	45.9	74.3	84.5
Exports of Goods and Services (XGS)	93.1	97.6	99.6	110.4	126.8	123.8	131.6	138.9	165.7	222.8	235.8
GDP at Market Prices	221.1	241.6	250.9	250.0	262.6	276.3	294.7	314.9	350.6	378.2	410.6
Central Govt. Current Revenue (CGCR)	54.4	60.1	58.8	63.4	68.8	68.6	73.6	76.3	85.2	100.7	110.1
International Reserves (IR)	15.9	13.7	23.9	25.3	41.9	56.8	47.0	31.5	32.7	49.5	50.6
DEBT INDICATORS (%)											
Disbursed Debt Outstanding at e.o.p. per capita (\$US)	936.0	915.2	880.5	840.3	906.1	897.8	915.7	936.1	960.8	1048.7	1274.1
Disbursed Debt Outstanding at e.o.p./GDP	40.1	36.2	33.9	32.6	33.8	32.0	30.7	29.6	27.4	27.9	31.5
Disbursed Debt Outstanding at e.o.p./XG	302.7	340.0	361.1	358.4	351.1	359.9	363.3	284.0	209.3	142.1	152.8
Disbursed Debt Outstanding at e.o.p./XGS	95.2	89.6	85.3	73.8	69.9	71.5	68.8	67.0	58.0	47.4	54.8
Debt Service Payments/GDP	1.9	2.0	2.7	2.8	2.6	3.1	2.9	2.7	2.4	2.5	2.5
Debt Service Payments/XG	14.1	19.2	29.1	31.3	26.8	35.3	34.7	25.7	18.1	12.7	12.1
Debt Service Payments/XGS (Debt Service Ratio)	4.4	5.1	6.9	6.4	5.3	7.0	6.6	6.1	5.0	4.2	4.4
Debt Service Payments/CGCR	7.6	8.2	11.6	11.2	9.8	12.7	11.7	11.1	9.7	9.4	9.3
Debt Service Payments/Disbursements	27.3	110.7	106.1	244.4	64.5	142.3	107.0	52.7	90.2	59.2	31.4
Debt Service Payments/IR	25.9	36.1	28.6	28.1	16.2	15.3	18.4	26.8	25.4	19.0	20.3
Interest Payments/GDP	0.8	0.8	0.8	0.9	0.8	0.7	0.8	0.7	0.7	0.8	0.8
Interest Payments/XG	6.2	7.8	9.1	9.7	8.5	8.1	9.1	6.6	5.7	3.8	3.7
Interest Payments/XGS	2.0	2.0	2.1	2.0	1.7	1.6	1.7	1.6	1.6	1.3	1.3
Growth of the External Public Debt	...	-1.3	-2.9	-4.1	8.7	-0.2	2.4	2.8	3.3	9.8	22.3

GRENADA
TABLE 6.2: EXTERNAL PUBLIC DEBT BY CREDITORS: 1990-2000

ITEMS	(in millions of United States Dollars)										
	1990	1991	1992	1993	1994	1995	1996	1997	1998	1999	2000
Official Creditors	67.6	66.0	67.5	66.7	75.5	77.2	79.8	83.4	83.0	87.5	87.8
Bilateral	25.3	21.9	23.2	22.9	28.0	27.9	31.9	35.7	36.7	41.2	41.4
Multilateral	42.3	44.1	44.3	43.7	47.5	49.3	47.8	47.7	46.3	46.3	46.4
Private Creditors	21.1	21.5	17.4	14.8	13.1	11.3	10.9	9.7	13.1	18.1	41.4
Commercial Banks	1.0	0.9	0.7	0.6	0.5	0.4	1.9	2.8	6.0	10.7	23.8
Suppliers Credit	19.5	20.1	16.2	13.7	12.2	10.4	8.5	6.5	4.0	3.1	1.7
Other Creditors	0.5	0.5	0.5	0.5	0.5	0.5	0.5	0.4	3.1	4.3	15.8
Total External Public Debt	88.6	87.5	85.0	81.5	88.6	88.4	90.6	93.1	96.2	105.6	129.2

GRENADA
TABLE 6.2b: EXTERNAL PUBLIC DEBT BY CREDITORS: 1990-2000 (Percentage Distribution)

ITEMS											
	1990	1991	1992	1993	1994	1995	1996	1997	1998	1999	2000
Official Creditors	76.2	75.4	79.5	81.8	85.2	87.2	88.0	89.5	86.3	82.8	68.0
Bilateral	28.5	25.0	27.3	28.1	31.6	31.5	35.2	38.3	38.2	39.0	32.1
Multilateral	47.7	50.5	52.2	53.6	53.6	55.7	52.8	51.2	48.2	43.9	35.9
Private Creditors	23.8	24.6	20.5	18.2	14.8	12.8	12.0	10.5	13.7	17.2	32.0
Commercial Banks	1.2	1.0	0.9	0.8	0.5	0.4	2.1	3.1	6.3	10.1	18.4
Suppliers Credit	22.0	22.9	19.1	16.8	13.7	11.7	9.4	6.9	4.2	2.9	1.3
Other Creditors	0.6	0.6	0.6	0.6	0.5	0.6	0.5	0.5	3.2	4.1	12.3
Total External Public Debt	100.0	100.0	100.0	100.0	100.0	100.0	100.0	100.0	100.0	100.0	100.0

FIGURE 6.1: GRENADA'S DISBURSED DEBT OUTSTANDING AS A PERCENTAGE OF ITS XGS AND GDP: 1990-2000

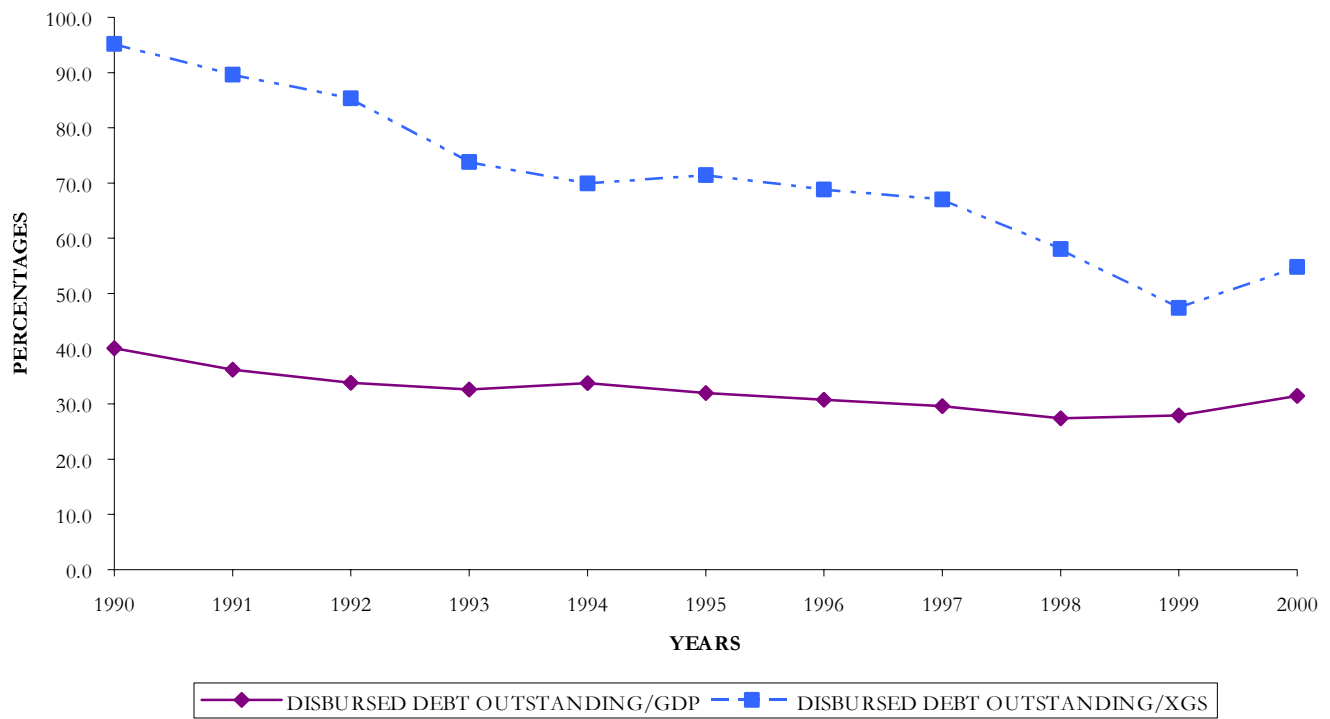
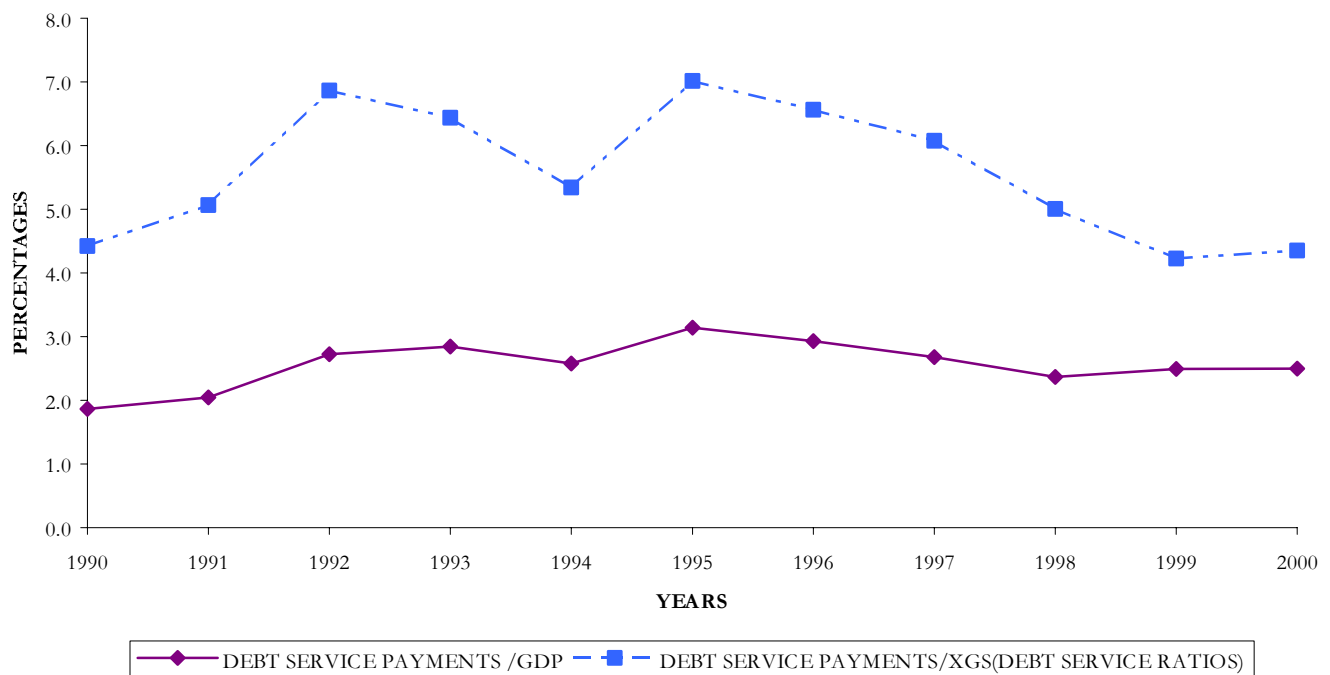


FIGURE 6.2 GRENADA DEBT SERVICE PAYMENTS AS A PERCENTAGE OF ITS XGS AND GDP: 1990-2000



GUYANA
TABLE 7.1: SUMMARY OF EXTERNAL PUBLIC DEBT OPERATIONS: 1990-2000

	(in millions of United States Dollars)										
ITEMS	1990	1991	1992	1993	1994	1995	1996	1997	1998	1999	2000
Disbursed Debt at the Beginning of Period	1391.9	1820.1	1855.4	1967.2	1953.5	1999.5	2058.3	1537.0	1513.0	1507.5	1210.9
Net Borrowing	238.6	84.8	35.0	17.7	-7.0	-71.0	38.5	14.5	-4.2	17.5	29.7
Disbursements	311.0	128.5	79.1	62.6	31.8	0.0	108.7	88.9	67.5	58.3	77.1
Amortisation	72.4	43.7	44.1	44.9	38.8	71.0	70.2	74.4	71.7	40.7	47.3
Valuation Adjustment	189.6	-49.5	76.8	-31.4	53.0	129.8	-559.8	-38.5	-1.3	-314.1	-45.8
Disbursed Debt Outstanding at the end of Period (e.o.p)	1820.1	1855.4	1967.2	1953.5	1999.5	2058.3	1537.0	1513.0	1507.5	1210.9	1194.8
Debt Service Payments	151.5	71.1	88.0	85.1	99.2	108.0	114.8	131.3	130.1	70.2	82.9
Amortisation	72.4	43.7	44.1	44.9	38.8	71.0	70.2	74.4	71.7	40.7	47.3
Interest Payments	79.1	27.4	43.9	40.2	60.4	37.0	44.6	56.9	58.4	29.5	35.6
MAJOR AGGREGATES											
Mid-Year Population ('000s of Persons)	749.9	719.1	712.4	734.9	746.0	760.4	770.1	775.1	773.4	770.6	772.2
Exports of Goods (XG)	203.9	239.0	381.7	414.0	463.4	495.7	574.8	593.4	547.0	525.0	505.2
Exports of Goods and Services (XGS)	252.3	294.5	492.5	534.4	592.8	640.0	733.9	754.0	700.7	683.2	680.3
GDP at Market Prices	396.3	348.5	373.9	466.2	529.2	622.1	705.1	742.6	659.6	685.4	718.8
Central Govt. Current Revenue (CGCR)	135.2	105.8	142.2	171.7	166.0	210.3	249.0	237.3	202.3	202.8	228.4
International Reserves (IR)	-102.6	-27.9	15.2	56.4	89.4	86.5	153.9	149.9	122.2	126.8	178.4
DEBT INDICATORS (%)											
Disbursed Debt Outstanding at e.o.p. per capita (\$US)	2427.1	2580.2	2761.3	2658.2	2680.3	2706.9	1995.9	1952.0	1949.2	1571.4	1547.3
Disbursed Debt Outstanding at e.o.p./GDP	459.3	532.4	526.1	419.0	377.8	330.9	218.0	203.7	228.5	176.7	166.2
Disbursed Debt Outstanding at e.o.p./XG	892.6	776.3	515.4	471.9	431.5	415.2	267.4	255.0	275.6	230.7	236.5
Disbursed Debt Outstanding at e.o.p./XGS	721.4	630.0	399.4	365.6	337.3	321.6	209.4	200.7	215.1	177.2	175.6
Debt Service Payments/GDP	38.2	20.4	23.5	18.3	18.7	17.4	16.3	17.7	19.7	10.2	11.5
Debt Service Payments/XG	74.3	29.7	23.1	20.6	21.4	21.8	20.0	22.1	23.8	13.4	16.4
Debt Service Payments/XGS (Debt Service Ratio)	60.0	24.1	17.9	15.9	16.7	16.9	15.6	17.4	18.6	10.3	12.2
Debt Service Payments/CGCR	112.1	67.2	61.9	49.6	59.8	51.4	46.1	55.3	64.3	34.6	36.3
Debt Service Payments/Disbursements	48.7	55.3	111.3	135.9	311.6	...	105.6	147.7	192.8	120.5	107.6
Debt Service Payments/IR	--	--	578.9	150.9	111.0	124.9	74.6	87.6	106.5	55.4	46.5
Interest Payments/GDP	20.0	7.9	11.7	8.6	11.4	5.9	6.3	7.7	8.9	4.3	5.0
Interest Payments/XG	38.8	11.5	11.5	9.7	13.0	7.5	7.8	9.6	10.7	5.6	7.0
Interest Payments/XGS	31.4	9.3	8.9	7.5	10.2	5.8	6.1	7.5	8.3	4.3	5.2
Growth of the External Public Debt	...	1.9	6.0	-0.7	2.4	2.9	-25.3	-1.6	-0.4	-19.7	-1.3

GUYANA
TABLE 7.2: EXTERNAL PUBLIC DEBT BY CREDITORS: 1990-2000

ITEMS	(in millions of United States Dollars)										
	1990	1991	1992	1993	1994	1995	1996	1997	1998	1999	2000
Official Creditors	1690.1	1736.9	1806.6	1819.9	1868.4	1933.6	1421.8	1402.8	1417.4	1153.2	1143.4
Bilateral	973.3	922.2	943.2	912.6	928.7	947.0	441.7	449.8	450.9	360.9	355.2
Multilateral	716.8	814.7	863.4	907.3	939.7	986.6	980.1	953.1	966.4	792.3	788.3
Private Creditors	130.0	118.5	160.6	133.6	131.1	124.7	115.2	110.2	90.1	57.8	51.4
Financial Institutions	69.1	69.1	-	-	-	-	2.9	2.8	1.0	0.5	0.5
Suppliers Credit	22.7	14.4	97.4	75.8	71.6	68.9	64.6	59.0	54.4	15.2	14.8
Nationalisation	28.7	25.5	34.7	28.1	27.9	22.6	15.0	14.9	6.6	7.5	...
Bonds	9.5	9.5	28.5	29.7	31.6	33.2	32.8	33.5	28.1	34.5	28.3
Other	7.8
Total External Public Debt	1820.1	1855.4	1967.2	1953.5	1999.5	2058.3	1537.0	1513.0	1507.5	1210.9	1194.8

GUYANA
TABLE 7.2b: EXTERNAL PUBLIC DEBT BY CREDITORS: 1990-2000 (Percentage Distribution)

ITEMS	1990	1991	1992	1993	1994	1995	1996	1997	1998	1999	2000
Official Creditors	92.9	93.6	91.8	93.2	93.4	93.9	92.5	92.7	94.0	95.2	95.7
Bilateral	53.5	49.7	47.9	46.7	46.4	46.0	28.7	29.7	29.9	29.8	29.7
Multilateral	39.4	43.9	43.9	46.4	47.0	47.9	63.8	63.0	64.1	65.4	66.0
Private Creditors	7.1	6.4	8.2	6.8	6.6	6.1	7.5	7.3	6.0	4.8	4.3
Financial Institutions	3.8	3.7	-	-	-	-	-	-	-	-	-
Suppliers Credit	1.2	0.8	5.0	3.9	3.6	3.3	4.2	3.9	3.6	1.3	1.2
Nationalisation	1.6	1.4	1.8	1.4	1.4	1.1	1.0	1.0	0.4	0.6	0.0
Bonds	0.5	0.5	1.4	1.5	1.6	1.6	2.1	2.2	1.9	2.9	2.4
Other	0.7
Total External Public Debt	100.0	100.0	100.0	100.0	100.0	100.0	100.0	100.0	100.0	100.0	100.0

FIGURE 7.1: GUYANA'S DISBURSED DEBT OUTSTANDING AS A PERCENTAGE OF ITS XGS AND GDP: 1990-2000

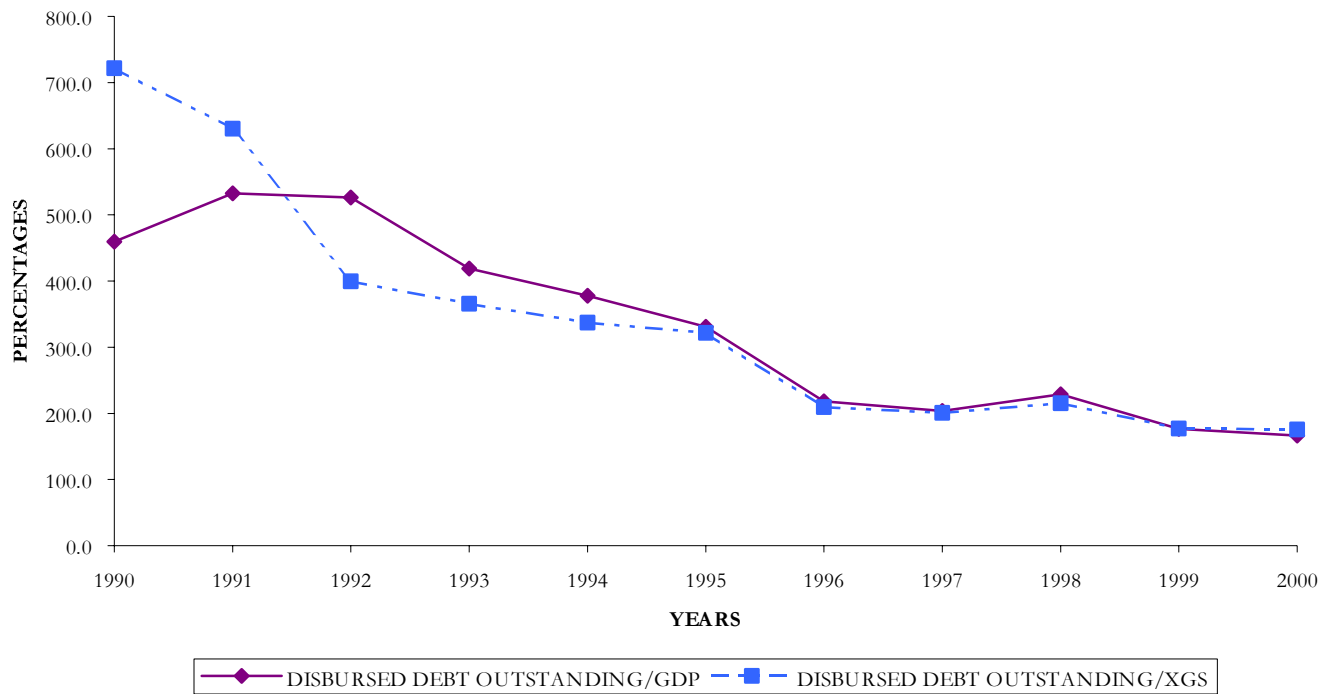
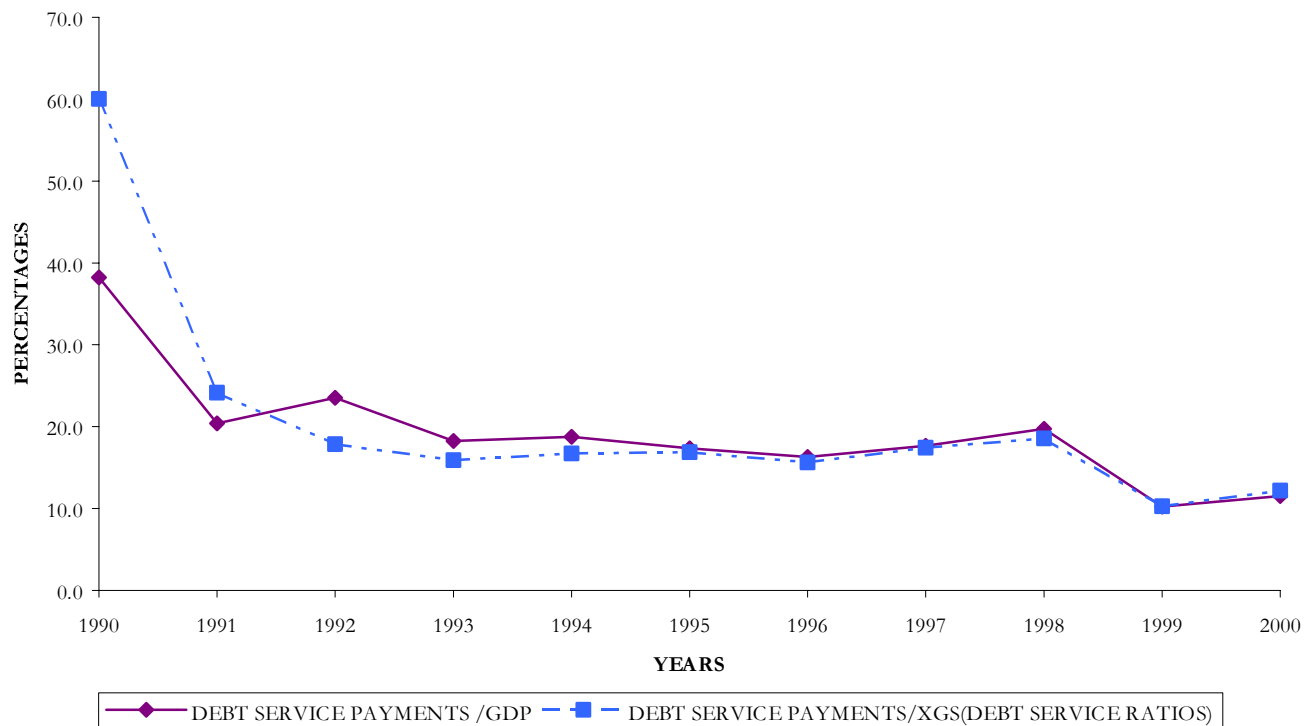


FIGURE 7.2 GUYANA'S DEBT SERVICE PAYMENTS AS A PERCENTAGE OF ITS XGS AND GDP: 1990-2000



JAMAICA
TABLE 8.1: SUMMARY OF EXTERNAL PUBLIC DEBT OPERATIONS: 1990-2000

(in millions of United States Dollars)

ITEMS	1990	1991	1992	1993	1994	1995	1996	1997	1998	1999	2000
Disbursed Debt at the Beginning of Period	4038.4	4152.4	3874.3	3678.0	3687.2	3651.8	3451.9	3231.9	3277.6	3306.4	3024.1
Net Borrowing	114.0	-278.1	-196.3	9.2	-35.3	-199.9	-220.0	45.7	28.7	-282.3	351.2
Disbursements	485.3	86.5	197.1	349.8	314.2	200.5	172.3	390.5	467.7	135.8	659.4
Amortisation	371.2	364.7	393.4	340.6	349.6	400.4	392.3	344.8	438.9	418.1	308.2
Valuation Adjustment	-	-	-	-	-	-	-	-	-	-	-
Disbursed Debt Outstanding at the end of Period (e.o.p)	4152.4	3874.3	3678.0	3687.2	3651.8	3451.9	3231.9	3277.6	3306.4	3024.1	3375.3
Debt Service Payments(Actuals)	663.5	620.6	637.9	542.1	536.0	592.6	579.5	523.1	635.6	603.5	477.2
Amortisation	371.2	364.7	393.4	340.6	349.6	400.4	392.3	344.8	438.9	418.1	308.2
Interest Payments	292.3	255.9	244.5	201.6	186.5	192.2	187.2	178.3	196.7	185.4	169.0
MAJOR AGGREGATES											
Mid-Year Population ('000s of Persons)	2368.9	2388.5	2411.3	2434.8	2459.4	2488.1	2515.5	2540.5	2562.5	2581.7	2599.7
Exports of Goods (XG)	1157.5	1150.7	1051.3	1075.4	1550.3	1794.0	1721.0	1700.3	1613.4	1489.9	1367.8
Exports of Goods and Services (XGS)	2328.3	2270.2	2353.5	2394.3	3149.6	3555.4	3487.2	3562.2	3555.8	3483.5	4468.7
GDP at Market Prices	4248.0	3494.3	3183.9	3893.1	4054.2	4840.0	5862.3	6655.8	6708.8	6818.2	6928.4
Central Govt. Current Revenue (CGCR)	1016.1	540.0	900.4	870.6	1181.3	1333.2	1751.8	1745.3	1918.5	1927.9	2136.9
International Reserves (IR)	-314.2	-383.0	-85.6	12.5	397.9	421.3	692.1	540.5	582.0	450.2	969.5
DEBT INDICATORS (%)											
Disbursed Debt Outstanding at e.o.p. per capita (\$US)	1752.9	1622.1	1525.3	1514.4	1484.8	1387.4	1284.8	1290.1	1290.3	1171.4	1298.3
Disbursed Debt Outstanding at e.o.p./GDP	97.7	110.9	115.5	94.7	90.1	71.3	55.1	49.2	49.3	44.4	48.7
Disbursed Debt Outstanding at e.o.p./XG	358.7	336.7	349.8	342.9	235.6	192.4	187.8	192.8	204.9	203.0	246.8
Disbursed Debt Outstanding at e.o.p./XGS	178.3	170.7	156.3	154.0	115.9	97.1	92.7	92.0	93.0	86.8	75.5
Debt Service Payments/GDP	15.6	17.8	20.0	13.9	13.2	12.2	9.9	7.9	9.5	8.9	6.9
Debt Service Payments/XG	57.3	53.9	60.7	50.4	34.6	33.0	33.7	30.8	39.4	40.5	34.9
Debt Service Payments/XGS (Debt Service Ratio)	28.5	27.3	27.1	22.6	17.0	16.7	16.6	14.7	17.9	17.3	10.7
Debt Service Payments/CGCR	65.3	114.9	70.8	62.3	45.4	44.4	33.1	30.0	33.1	31.3	22.3
Debt Service Payments/Disbursements	136.7	717.2	323.6	155.0	170.6	295.6	336.3	134.0	135.9	444.4	...
Debt Service Payments/IR	--	--	--	4333.5	134.7	140.6	83.7	96.8	109.2	134.0	...
Interest Payments/GDP	6.9	7.3	7.7	5.2	4.6	4.0	3.2	2.7	2.9	2.7	2.4
Interest Payments/XG	25.3	22.2	23.3	18.7	12.0	10.7	10.9	10.5	12.2	12.4	12.4
Interest Payments/XGS	12.6	11.3	10.4	8.4	5.9	5.4	5.4	5.0	5.5	5.3	3.8
Growth of the External Public Debt	...	-6.7	-5.1	0.3	-1.0	-5.5	-6.4	1.4	0.9	-8.5	11.6

JAMAICA
TABLE 8.2: EXTERNAL PUBLIC DEBT BY CREDITORS: 1990-2000

(in millions of United States Dollars)											
ITEMS	1990	1991	1992	1993	1994	1995	1996	1997	1998	1999	2000
Official Creditors	3490.8	3302.6	3150.7	3076.1	3174.8	3021.2	2814.7	2710.2	2563.5	2395.0	2333.8
Bilateral	1995.0	1956.6	1850.7	1791.8	1805.7	1802.1	1717.8	1545.1	1476.2	1367.5	1218.4
Multilateral	1495.8	1346.0	1300.1	1284.3	1369.2	1219.0	1096.9	1165.1	1087.2	1027.5	1115.4
(IMF)	358.4	380.6	371.3	303.9	287.7	223.5	141.1	0.0	0.0	0.0	0.0
Private Creditors	661.7	571.7	527.3	611.1	477.0	430.8	417.2	567.4	742.9	629.1	1041.4
Commercial Banks	394.0	349.7	333.4	387.1	360.2	338.2	297.2	267.6	165.1	147.2	132.7
Other Creditors	267.7	222.0	193.9	224.0	116.8	92.6	120.0	299.9	577.8	481.9	908.7
Total External Public Debt	4152.4	3874.3	3678.0	3687.2	3651.8	3451.9	3231.9	3277.6	3306.4	3024.1	3375.3

JAMAICA
TABLE 8.2b: EXTERNAL PUBLIC DEBT BY CREDITORS (Percentage Distribution)

ITEMS	1990	1991	1992	1993	1994	1995	1996	1997	1998	1999	2000
Official Creditors	84.1	85.2	85.7	83.4	86.9	87.5	87.1	82.7	77.5	79.2	69.1
Bilateral	48.0	50.5	50.3	48.6	49.4	52.2	53.2	47.1	44.6	45.2	36.1
Multilateral	36.0	34.7	35.3	34.8	37.5	35.3	33.9	35.5	32.9	34.0	33.0
(IMF)	8.6	9.8	10.1	8.2	7.9	6.5	4.4	0.0	0.0	0.0	0.0
Private Creditors	15.9	14.8	14.3	16.6	13.1	12.5	12.9	17.3	22.5	20.8	30.9
Commercial Banks	9.5	9.0	9.1	10.5	9.9	9.8	9.2	8.2	5.0	4.9	3.9
Other Creditors	6.4	5.7	5.3	6.1	3.2	2.7	3.7	9.1	17.5	15.9	26.9
Total External Public Debt	100.0	100.0	100.0	100.0	100.0	100.0	100.0	100.0	100.0	100.0	100.0

FIGURE 8.1: JAMAICA'S DISBURSED DEBT OUTSTANDING AS A PERCENTAGE OF ITS XGS AND GDP: 1990-2000

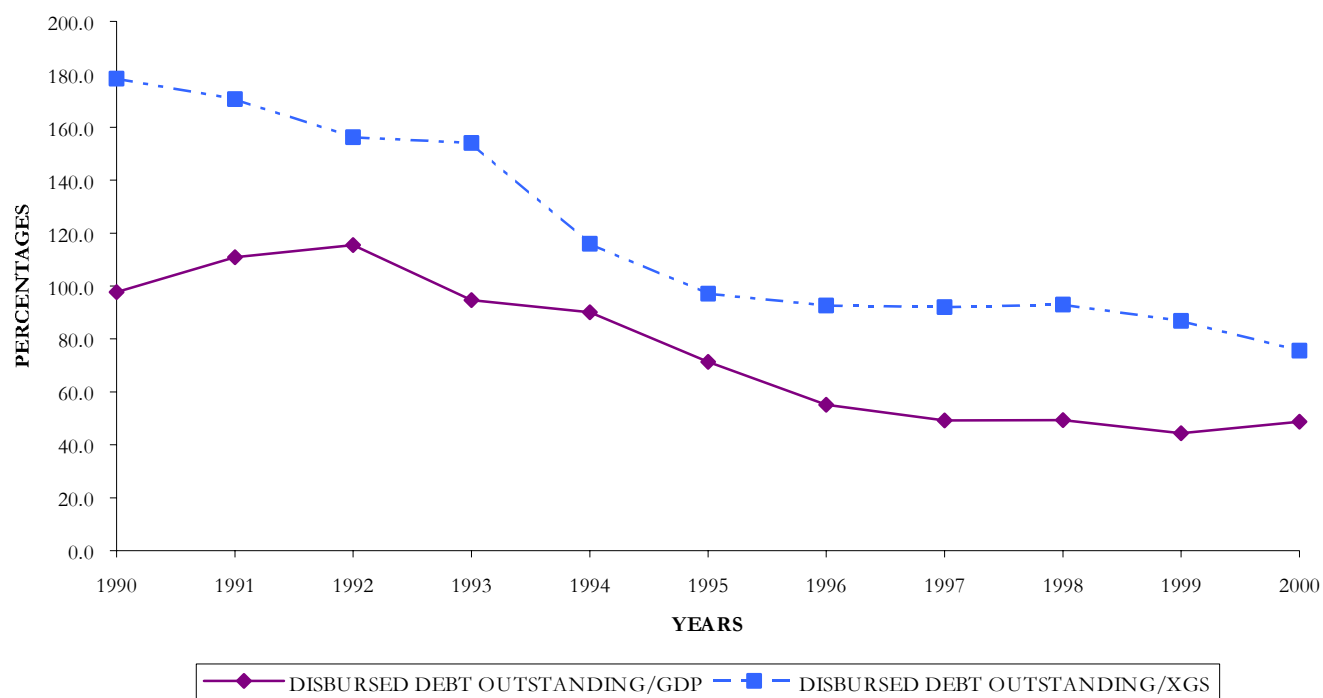
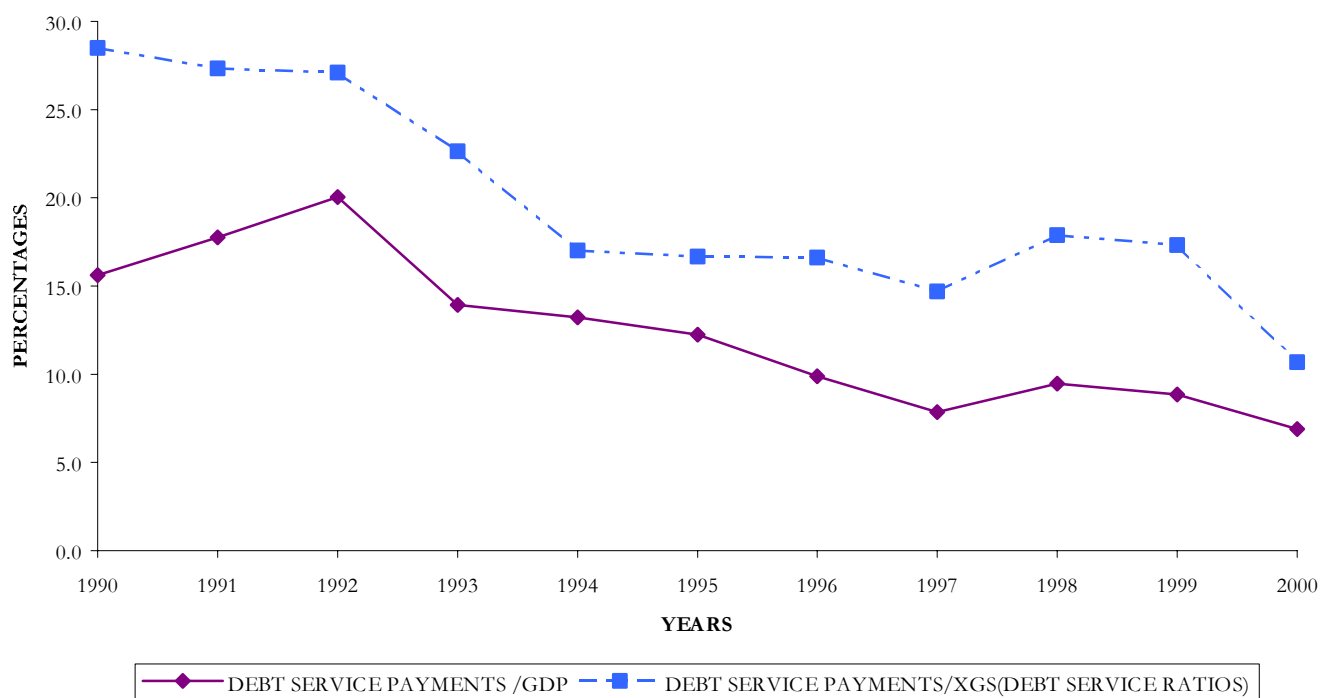


FIGURE 8.2: JAMAICA'S DEBT SERVICE PAYMENTS AS A PERCENTAGE OF ITS XGS AND GDP: 1990-2000



MONTSERRAT
TABLE 9.1: SUMMARY OF EXTERNAL PUBLIC DEBT OPERATIONS

(in millions of United States Dollars)

ITEMS	1990	1991	1992	1993	1994	1995	1996	1997	1998	1999	2000
Disbursed Debt at the Beginning of Period	3.4	3.0	3.4	5.2	10.0	10.2	10.7	11.1	10.6	10.2	8.0
Net Borrowing	0.1	0.4	1.9	5.1	0.0	0.3	0.5	-0.4	-0.3	0.0	-0.2
Disbursements	0.4	0.7	2.1	5.4	0.3	0.6	1.0	-	-	0.2	-
Amortisation	0.3	0.3	0.3	0.3	0.3	0.3	0.4	0.4	0.3	0.3	0.2
Valuation and other Adjustments	-0.5	0.0	-0.1	-0.3	0.2	0.2	-0.1	-0.2	0.0	-2.2	-0.1
Disbursed Debt Outstanding at the end of Period (e.o.p)	3.0	3.4	5.2	10.0	10.2	10.7	11.1	10.6	10.2	8.0	7.7
Debt Service Payments	0.5	0.4	0.4	0.5	0.7	0.6	0.8	0.6	0.5	0.3	0.2
Amortisation	0.3	0.3	0.3	0.3	0.3	0.3	0.4	0.4	0.3	0.3	0.1
Interest Payments	0.1	0.1	0.1	0.2	0.4	0.3	0.3	0.3	0.2	0.0	0.0
Other Payments	-	0.0	0.0	0.0	0.0	-	0.0	-	-	-	-
MAJOR AGGREGATES											
Mid-Year Population ('000s of Persons)	11.9	10.9	10.9	10.5	10.4	10.6	7.9	6.1	3.6	4.8	4.9
Exports of Goods (XG)	1.5	1.0	1.6	2.3	2.9	12.1	41.3	8.2	1.2	1.3	1.1
Exports of Goods and Services (XGS)	19.1	19.5	21.4	25.6	30.1	36.7	56.9	22.1	14.2	21.6	16.8
GDP at Market Prices	67.1	55.8	58.8	62.0	63.6	60.2	48.7	40.6	37.3	35.1	33.5
Central Govt. Current Revenue (CGCR)	15.8	16.4	15.9	10.2	17.6	15.9	12.4	10.2	8.6	9.9	10.2
International Reserves (IR)	10.1	1.5	1.2	9.2	16.3	17.8	23.1	36.8	48.6	49.4	44.1
DEBT INDICATORS (%)											
Disbursed Debt Outstanding at e.o.p. per capita (\$US)	254.0	314.5	475.7	952.5	984.3	1006.2	1416.3	1732.2	2835.6	1678.3	1560.8
Disbursed Debt Outstanding at e.o.p./GDP	4.5	6.1	8.8	16.1	16.1	17.7	22.9	26.0	27.3	22.8	23.0
Disbursed Debt Outstanding at e.o.p./XG	203.7	332.9	328.7	440.8	350.7	87.9	26.9	128.8	846.7	634.0	688.7
Disbursed Debt Outstanding at e.o.p./XGS	15.8	17.6	24.3	39.0	34.0	29.0	19.6	47.8	71.8	37.1	45.8
Debt Service Payments/GDP	0.7	0.8	0.7	0.8	1.0	1.0	1.6	1.5	1.4	0.9	0.5
Debt Service Payments/XG	33.0	41.1	27.6	22.3	22.7	5.2	1.9	7.4	42.5	24.4	14.0
Debt Service Payments/XGS (Debt Service Ratio)	2.6	2.2	2.0	2.0	2.2	1.7	1.4	2.7	3.6	1.4	0.9
Debt Service Payments/CGCR	3.1	2.6	2.7	4.9	3.8	3.9	6.2	6.0	6.0	3.1	1.5
Debt Service Payments/Disbursements	118.7	63.3	20.5	9.4	209.5	107.4	80.2	-	-	-	-
Debt Service Payments/IR	4.8	27.5	35.9	5.5	4.1	3.5	3.3	1.7	1.1	0.6	0.4
Interest Payments/GDP	0.2	0.3	0.2	0.3	0.6	0.5	0.7	0.6	0.5	0.1	0.0
Interest Payments/XG	10.1	13.9	8.3	9.2	12.2	2.6	0.8	3.1	14.5	3.2	0.8
Interest Payments/XGS	0.8	0.7	0.6	0.8	1.2	0.9	0.6	1.1	1.2	0.2	0.1
Growth of the External Public Debt	...	13.7	51.3	92.7	2.4	4.3	4.4	-5.3	-3.4	-21.5	-3.7

FIGURE 9.1: MONTSERRAT'S DISBURSED DEBT OUTSTANDING AS A PERCENTAGE OF ITS XGS AND GDP: 1990-2000

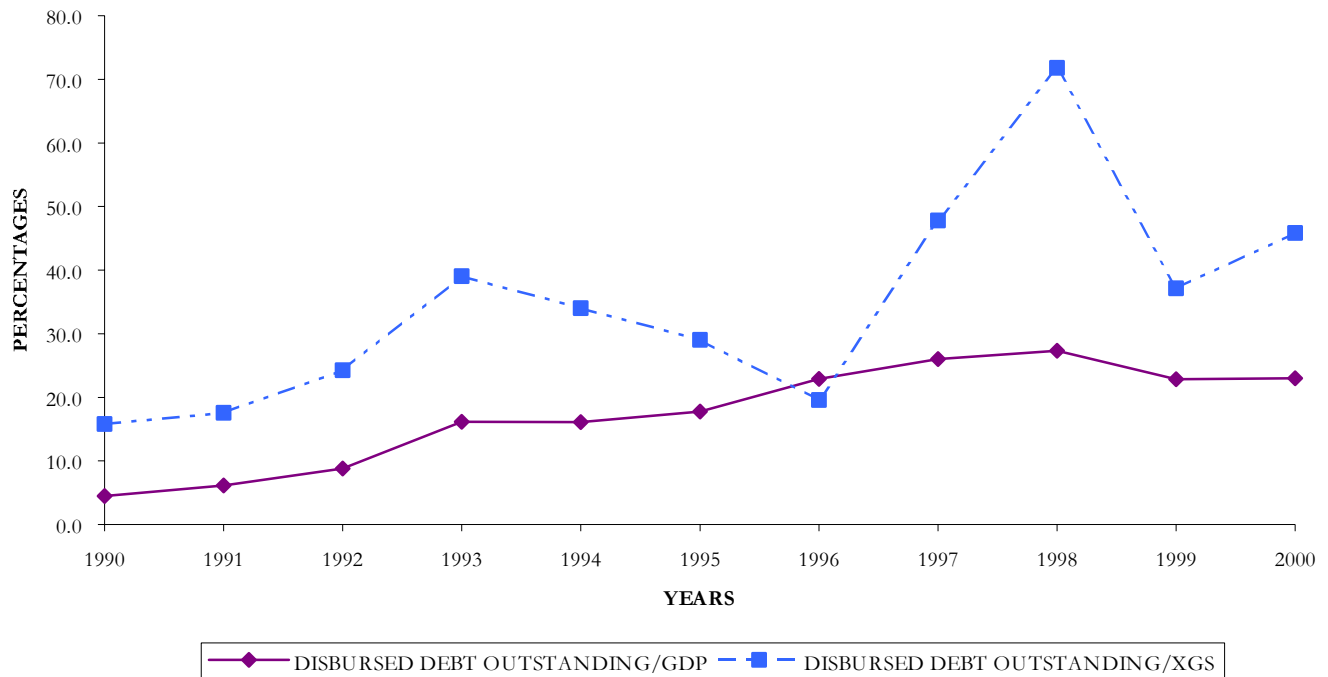
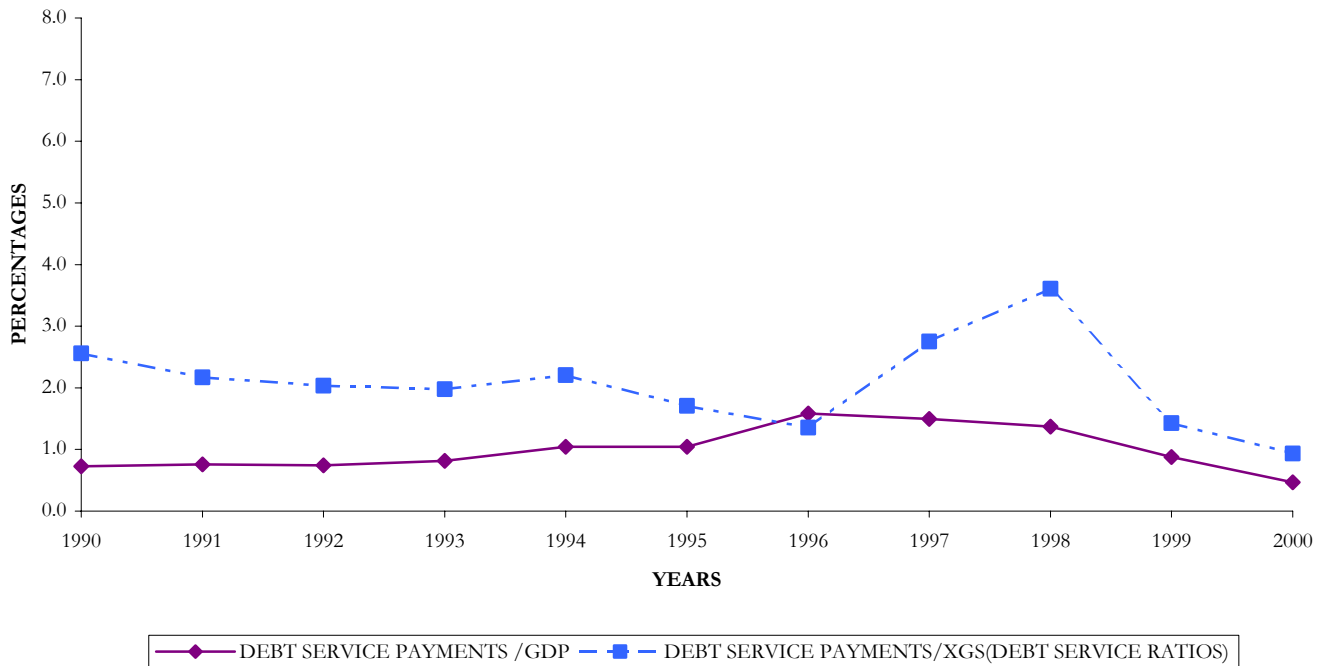


FIGURE 9.2: MONTSERRAT'S DEBT SERVICE PAYMENTS AS A PERCENTAGE OF ITS XGS AND GDP: 1990-2000



ST KITTS AND NEVIS
TABLE 10.1: SUMMARY OF EXTERNAL PUBLIC DEBT OPERATIONS: 1990-2000

(in millions of United States Dollars)

ITEMS	1990	1991	1992	1993	1994	1995	1996	1997	1998	1999	2000
Disbursed Debt at the Beginning of Period	34.9	39.9	41.6	45.3	47.7	51.6	55.1	61.4	107.6	124.5	153.1
Net Borrowing	3.6	2.4	4.9	3.4	3.3	3.2	6.2	47.0	20.3	28.3	9.8
Disbursements	5.0	4.4	7.5	6.7	7.1	7.8	11.0	52.0	26.4	37.6	22.7
Amortisation	1.4	2.1	2.6	3.3	3.8	4.6	4.8	5.0	6.1	9.3	12.9
Valuation and other Adjustments	1.4	-0.7	-1.1	-1.0	0.7	0.3	0.1	-0.8	-3.4	0.3	-1.0
Disbursed Debt Outstanding at the end of Period (e.o.p)	39.9	41.6	45.3	47.7	51.6	55.1	61.4	107.6	124.5	153.1	161.9
Debt Service Payments	3.3	3.4	4.5	5.1	6.2	6.4	6.8	7.4	11.2	16.8	20.7
Amortisation	1.4	2.1	2.6	3.3	3.8	4.6	4.8	5.0	6.1	9.3	12.9
Interest Payments	1.6	1.3	1.6	1.5	1.6	1.8	2.0	2.4	5.2	7.5	7.8
Other Payments	0.2	0.0	0.3	0.3	0.7	-	-	-	-	-	-
MAJOR AGGREGATES											
Mid-Year Population ('000s of Persons)	41.9	41.0	42.7	43.5	43.1	43.5	42.3	40.7	40.1	39.5	44.5
Exports of Goods (XG)	28.3	28.6	33.0	32.0	28.6	36.6	39.1	51.4	44.8	44.9	54.6
Exports of Goods and Services (XGS)	82.4	97.0	112.8	115.4	120.9	118.5	126.3	146.8	150.1	144.5	151.2
GDP at Market Prices	159.3	164.4	181.8	198.3	221.7	230.6	245.7	274.9	287.1	304.7	328.4
Central Govt. Current Revenue (CGCR)	36.6	34.5	39.8	45.0	49.5	66.7	74.8	81.7	87.7	93.3	94.1
International Reserves (IR)	26.4	23.0	26.7	30.1	31.8	32.6	31.2	51.8	65.0	36.9	56.5
DEBT INDICATORS (%)											
Disbursed Debt Outstanding at e.o.p. per capita (\$US)	952.5	1013.6	1061.6	1095.6	1199.5	1265.1	1451.9	2642.0	3102.7	3872.3	3637.6
Disbursed Debt Outstanding at e.o.p./GDP	25.0	25.3	24.9	24.0	23.3	23.9	25.0	39.2	43.4	50.2	49.3
Disbursed Debt Outstanding at e.o.p./XG	140.8	145.4	137.2	149.1	180.7	150.6	157.1	209.6	277.9	340.6	296.7
Disbursed Debt Outstanding at e.o.p./XGS	48.4	42.9	40.2	41.3	42.7	46.5	48.6	73.3	82.9	106.0	107.1
Debt Service Payments/GDP	2.0	2.1	2.5	2.6	2.8	2.8	2.8	2.7	3.9	5.5	6.3
Debt Service Payments/XG	11.5	12.0	13.7	16.0	21.6	17.5	17.5	14.5	25.0	37.3	37.9
Debt Service Payments/XGS (Debt Service Ratio)	4.0	3.5	4.0	4.4	5.1	5.4	5.4	5.1	7.5	11.6	13.7
Debt Service Payments/CGCR	8.9	9.9	11.3	11.3	12.5	9.6	9.1	9.1	12.8	18.0	22.0
Debt Service Payments/Disbursements	64.9	76.9	60.4	76.2	86.5	82.5	62.1	14.3	42.6	44.6	91.3
Debt Service Payments/IR	12.3	14.8	16.9	16.9	19.4	19.6	21.9	14.3	17.3	45.5	36.7
Interest Payments/GDP	1.0	0.8	0.9	0.8	0.7	0.8	0.8	0.9	1.8	2.5	2.4
Interest Payments/XG	5.7	4.7	4.8	4.7	5.6	5.0	5.2	4.7	11.5	16.7	14.3
Interest Payments/XGS	2.0	1.4	1.4	1.3	1.3	1.5	1.6	1.6	3.4	5.2	5.2
Growth of the External Public Debt	...	4.2	9.0	5.3	8.3	6.6	11.5	75.3	15.7	22.9	5.8

ST KITTS AND NEVIS
TABLE 10.2: EXTERNAL PUBLIC DEBT BY CREDITORS: 1990-2000

(in millions of United States Dollars)

ITEMS	1990	1991	1992	1993	1994	1995	1996	1997	1998	1999	2000
Official Creditors	36.8	38.0	41.4	42.8	44.2	46.8	50.6	74.1	77.5	88.8	92.4
Bilateral	16.9	17.1	19.2	18.3	18.8	18.4	21.1	39.7	38.3	37.7	36.6
Multilateral	19.8	20.9	22.2	24.6	25.4	28.4	29.4	34.4	39.2	51.1	55.8
Private Creditors	3.1	3.5	3.9	4.8	7.4	8.3	10.8	33.5	47.0	64.2	69.5
Commercial Banks	0.0	0.0	0.0	0.0	0.0	0.0	0.0	18.0	20.5	37.2	47.9
Suppliers Credit	3.1	3.5	3.9	4.8	7.3	7.9	6.4	5.1	12.8	12.1	8.1
Other Creditors	0.0	0.0	0.0	0.0	0.2	0.4	4.5	10.3	13.8	14.9	13.5
Total External Public Debt	39.9	41.6	45.3	47.7	51.6	55.1	61.4	107.6	124.5	153.1	161.9

ST KITTS AND NEVIS
TABLE 10.2b: EXTERNAL PUBLIC DEBT BY CREDITORS: 1990-2000 (Percentage Distribution)

ITEMS	1990	1991	1992	1993	1994	1995	1996	1997	1998	1999	2000
Official Creditors	92.2	91.4	91.4	89.9	85.6	85.0	82.4	68.9	62.2	58.0	57.1
Bilateral	42.4	41.1	42.5	38.3	36.4	33.5	34.4	36.9	30.8	24.6	22.6
Multilateral	49.6	50.3	48.9	51.6	49.2	51.5	47.9	32.0	31.5	33.4	34.5
Private Creditors	7.8	8.5	8.6	10.1	14.4	15.0	17.6	31.1	37.8	42.0	42.9
Commercial Banks	-	-	-	-	-	-	-	16.7	16.5	24.3	29.6
Suppliers Credit	7.8	8.5	8.6	10.1	14.1	14.3	10.4	4.8	10.2	7.9	5.0
Other Creditors	0.0	0.0	0.0	0.0	0.3	0.7	7.2	9.6	11.1	9.7	8.4
Total External Public Debt	100.0	99.9	100.0	100.0	100.0	100.0	100.0	100.0	100.0	100.0	100.0

FIGURE 10.1: ST KITTS AND NEVIS' DISBURSED DEBT OUTSTANDING AS A PERCENTAGE OF ITS XGS AND GDP: 1990-2000

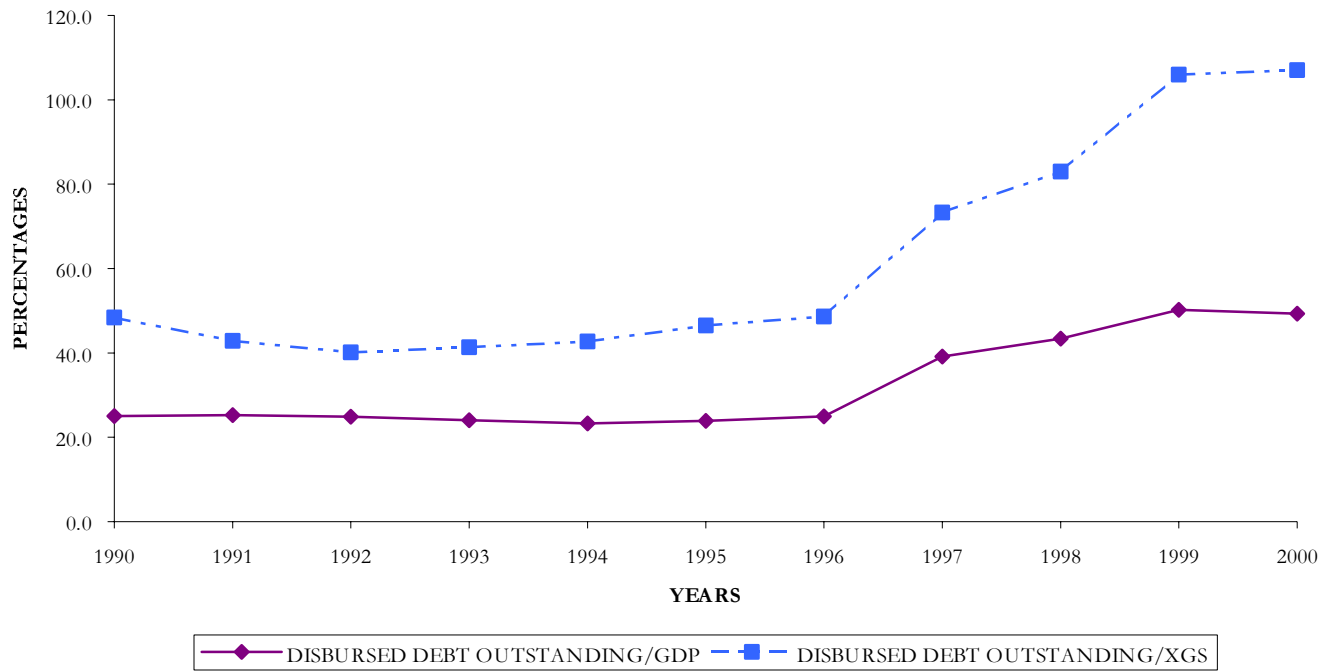
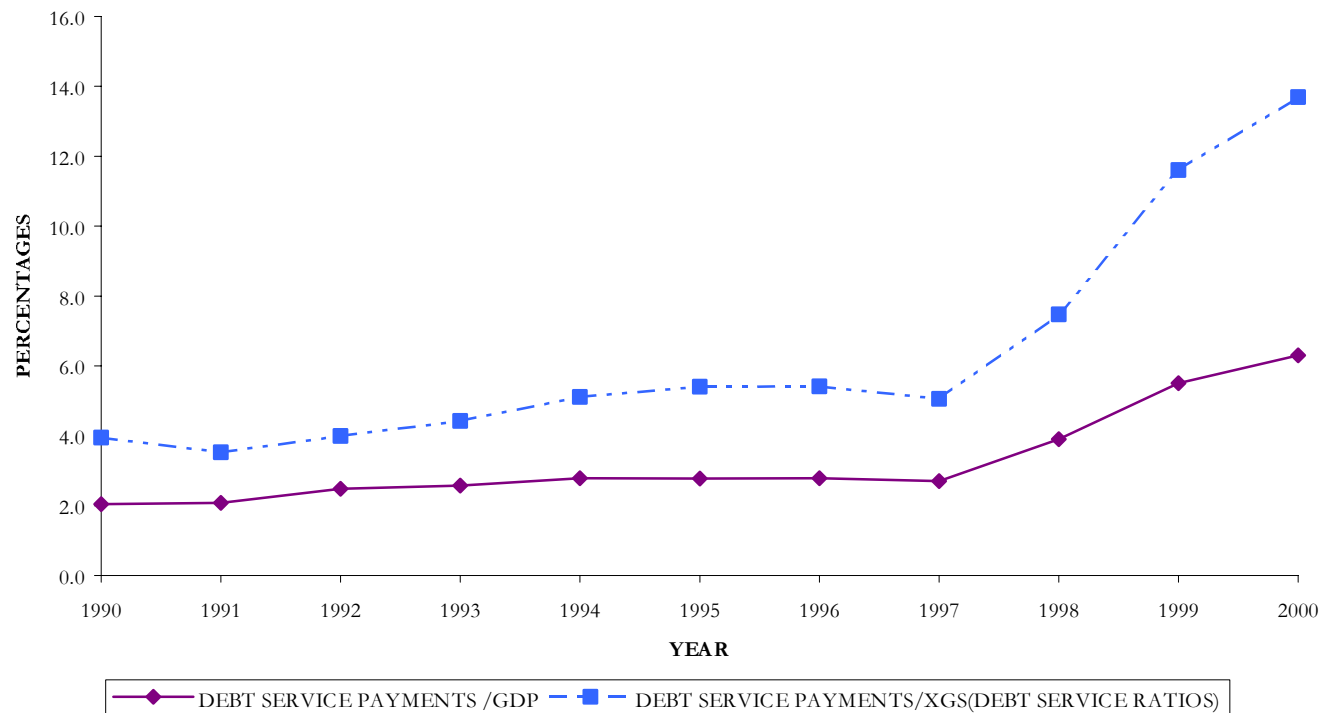


FIGURE 10.2: ST KITTS AND NEVIS' DEBT SERVICE PAYMENTS AS A PERCENTAGE OF ITS XGS AND GDP



SAINT LUCIA
TABLE11.1: SUMMARY OF EXTERNAL PUBLIC DEBT OPERATIONS: 1990-2000

	(in millions of United States Dollars)										
ITEMS	1990	1991	1992	1993	1994	1995	1996	1997	1998	1999	2000
Disbursed Debt at the Beginning of Period	52.7	70.0	79.5	95.8	99.4	105.4	116.2	128.4	138.7	145.3	159.8
Net Borrowing	13.7	8.7	21.2	6.0	2.8	8.5	13.3	15.2	7.3	12.6	29.4
Disbursements	16.9	13.1	28.2	13.1	8.6	14.6	19.6	22.0	15.6	22.7	41.5
Amortisation	3.1	4.4	7.0	7.1	5.8	6.1	6.3	6.8	8.3	10.0	12.1
Valuation and other Adjustments	3.6	0.8	-4.9	-2.4	3.1	2.3	-1.0	-4.9	-0.7	1.8	-2.5
Disbursed Debt Outstanding at the end of Period (e.o.p)	70.0	79.5	95.8	99.4	105.4	116.2	128.4	138.7	145.3	159.8	186.7
Debt Service Payments	6.1	8.6	11.5	11.9	10.6	11.0	11.7	12.4	14.2	16.3	19.4
Amortisation	3.1	4.4	7.0	7.1	5.8	6.1	6.3	6.8	8.3	10.0	12.1
Interest Payments	2.9	3.9	4.2	4.7	4.6	4.9	5.3	5.6	5.9	6.3	7.3
Other Payments	0.0	0.3	0.3	0.1	0.1	0.0	0.0	0.0	0.0	0.0	0.0
MAJOR AGGREGATES											
Mid-Year Population ('000s of Persons)	134.1	136.0	138.2	140.0	142.7	145.2	147.7	149.6	152.0	153.7	155.0
Exports of Goods (XG)	131.0	113.9	128.6	125.0	99.9	114.6	86.3	70.3	70.4	60.9	54.8
Exports of Goods and Services (XGS)	281.6	286.1	323.9	328.0	337.6	379.7	353.1	358.7	384.2	382.0	363.3
GDP at Market Prices	416.1	447.8	497.4	497.7	518.6	554.0	571.4	574.5	619.5	675.4	699.7
Central Govt. Current Revenue (CGCR)	96.3	101.6	124.3	129.8	127.9	134.4	139.1	138.9	156.9	178.7	182.5
International Reserves (IR)	56.4	72.8	65.4	42.6	26.6	34.1	4.4	-2.6	34.3	30.1	43.2
DEBT INDICATORS (%)											
Disbursed Debt Outstanding at e.o.p. per capita (\$US)	522.2	584.9	693.7	710.1	738.6	799.9	869.4	927.1	956.3	1039.7	1204.3
Disbursed Debt Outstanding at e.o.p./GDP	16.8	17.8	19.3	20.0	20.3	21.0	22.5	24.1	23.5	23.7	26.7
Disbursed Debt Outstanding at e.o.p./XG	53.5	69.8	74.5	79.6	105.5	101.3	148.8	197.5	206.5	262.3	341.0
Disbursed Debt Outstanding at e.o.p./XGS	24.9	27.8	29.6	30.3	31.2	30.6	36.4	38.7	37.8	41.8	51.4
Debt Service Payments/GDP	1.5	1.9	2.3	2.4	2.0	2.0	2.0	2.2	2.3	2.4	2.8
Debt Service Payments/XG	4.7	7.5	8.9	9.5	10.6	9.6	13.5	17.7	20.1	26.7	35.4
Debt Service Payments/XGS (Debt Service Ratio)	2.2	3.0	3.6	3.6	3.1	2.9	3.3	3.5	3.7	4.3	5.3
Debt Service Payments/CGCR	6.3	8.4	9.3	9.2	8.3	8.2	8.4	8.9	9.0	9.1	10.6
Debt Service Payments/Disbursements	36.2	65.3	40.8	91.1	122.4	75.3	59.6	56.5	91.1	71.9	46.8
Debt Service Payments/IR	10.8	11.8	17.6	28.0	39.7	32.2	267.3	--	41.3	54.0	44.9
Interest Payments/GDP	0.7	0.9	0.8	0.9	0.9	0.9	0.9	1.0	1.0	0.9	1.0
Interest Payments/XG	2.2	3.4	3.3	3.8	4.6	4.3	6.2	8.0	8.4	10.3	13.3
Interest Payments/XGS	1.0	1.4	1.3	1.4	1.4	1.3	1.5	1.6	1.5	1.6	2.0
Growth of the External Public Debt	...	13.5	20.5	3.7	6.0	10.2	10.6	8.0	4.8	10.0	16.8

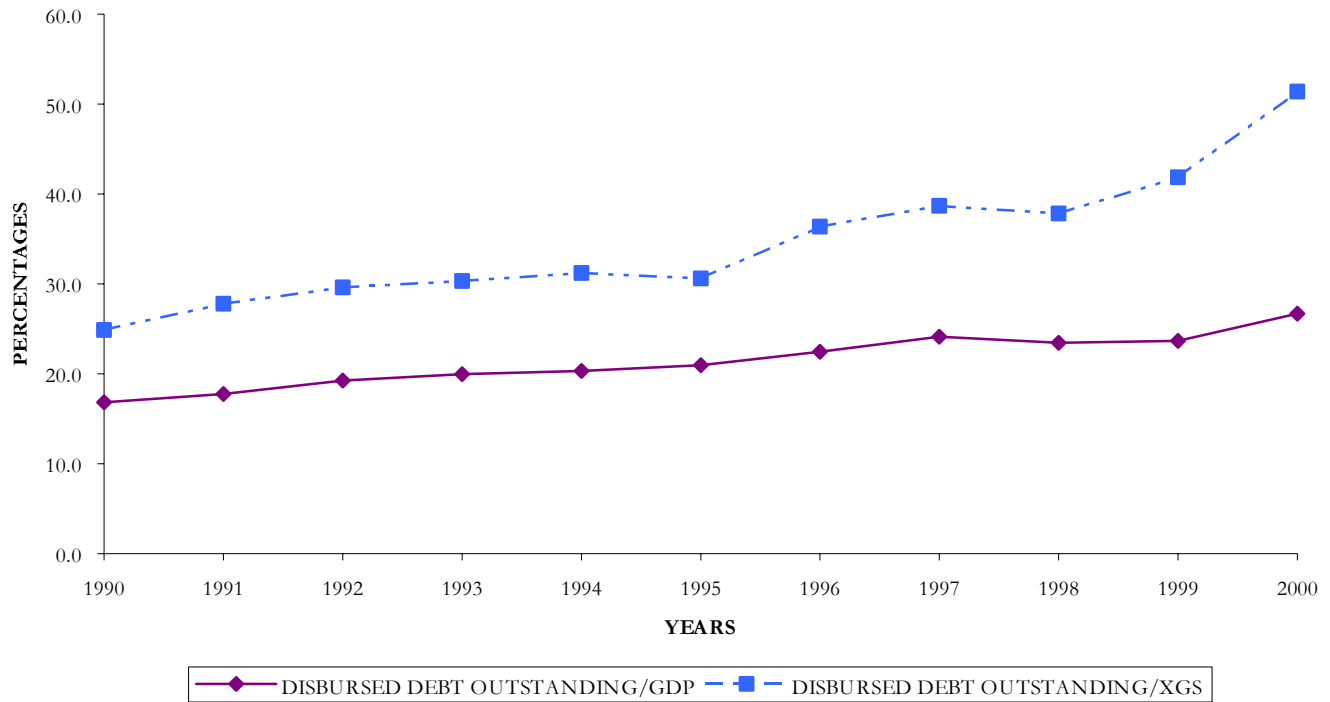
SAINT LUCIA
TABLE 11.2: EXTERNAL PUBLIC DEBT BY CREDITORS: 1990-2000

(in millions of United States Dollars)											
ITEMS	1990	1991	1992	1993	1994	1995	1996	1997	1998	1999	2000
Official Creditors	49.2	60.6	82.3	87.6	94.4	104.0	106.8	113.5	117.4	121.9	119.5
Bilateral	7.6	12.2	20.4	19.0	21.6	23.4	22.9	21.0	19.9	18.4	16.1
Multilateral	41.7	48.4	61.9	68.6	72.8	80.6	83.9	92.5	97.5	103.5	103.4
Private Creditors	20.8	19.0	13.6	11.8	11.0	12.2	21.6	25.2	27.9	38.0	67.2
Commercial Banks	2.0	1.2	0.3	0.0	0.0	1.1	3.3	3.9	6.4	14.7	46.8
Suppliers Credit	0.0	0.0	0.0	0.0	0.0	0.0	0.0	0.0	0.0	0.0	0.0
Other Creditors	18.8	17.8	13.2	11.8	11.0	11.1	18.3	21.3	21.5	23.3	20.4
Total External Public Debt	70.0	79.5	95.8	99.4	105.4	116.2	128.4	138.7	145.3	159.8	186.7

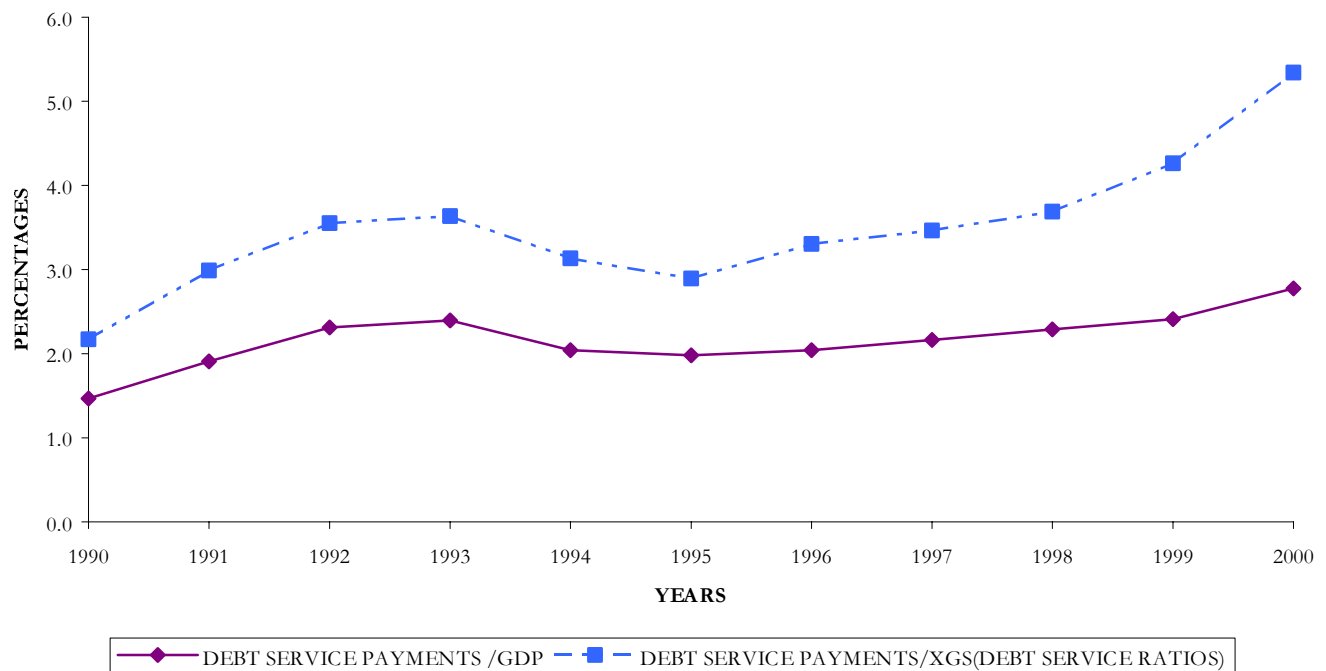
SAINT LUCIA
TABLE 11.2b: EXTERNAL PUBLIC DEBT BY CREDITORS: 1990-2000 (Percentage Distribution)

ITEMS	1990	1991	1992	1993	1994	1995	1996	1997	1998	1999	2000
Official Creditors	70.3	76.2	85.8	88.1	89.6	89.5	83.2	81.8	80.8	76.3	64.0
Bilateral	10.8	15.3	21.3	19.1	20.5	20.1	17.8	15.2	13.7	11.5	8.6
Multilateral	59.5	60.9	64.6	69.0	69.0	69.4	65.3	66.7	67.1	64.8	55.4
Private Creditors	29.7	23.8	14.2	11.9	10.4	10.5	16.8	18.2	19.2	23.7	36.0
Commercial Banks	2.8	1.5	0.3	0.0	0.0	1.0	2.6	2.8	4.4	9.2	25.1
Suppliers Credit	-	-	-	-	-	-	-	0.0	0.0	0.0	0.0
Other Creditors	26.9	22.4	13.8	11.9	10.4	9.5	14.3	15.3	14.8	14.5	10.9
Total External Public Debt	100.0	100.0	100.0	100.0	100.0	100.0	100.0	100.0	100.0	100.0	100.0

**FIGURE 11.1: SAINT LUCIA'S DISBURSED DEBT OUTSTANDING AS
A PERCENTAGE OF ITS XGS AND GDP: 1990-2000**



**FIGURE 11.2 SAINT LUCIA DEBT SERVICE PAYMENTS AS
A PERCENTAGE OF ITS XGS AND GDP: 1990-2000**



ST VINCENT AND THE GRENADINES
TABLE 12.1: SUMMARY OF EXTERNAL PUBLIC DEBT OPERATIONS: 1990-2000

(in millions of United States Dollars)

ITEMS	1990	1991	1992	1993	1994	1995	1996	1997	1998	1999	2000
Disbursed Debt at the Beginning of Period	50.1	55.6	65.2	70.2	76.5	86.8	87.3	86.8	88.7	100.7	160.1
Net Borrowing	5.9	8.7	6.3	7.9	8.7	-0.9	0.7	5.8	13.6	58.4	1.9
Disbursements	8.0	11.1	9.1	11.2	12.7	3.1	6.1	12.1	19.9	64.3	7.6
Amortisation	2.2	2.4	2.9	3.3	4.0	4.0	5.5	6.3	6.3	5.9	5.7
Valuation and other Adjustments	-0.3	0.9	-1.3	-1.6	1.6	1.4	-1.2	-3.8	-1.6	1.0	-2.7
Disbursed Debt Outstanding at the end of Period (e.o.p)	55.6	65.2	70.2	76.5	86.8	87.3	86.8	88.7	100.7	160.1	159.3
Debt Service Payments	3.7	4.2	4.7	5.3	6.4	6.6	8.3	9.2	9.6	11.4	10.2
Amortisation	2.2	2.4	2.9	3.3	4.0	4.0	5.5	6.3	6.3	5.9	5.7
Interest Payments	1.5	1.8	1.9	2.0	2.4	2.6	2.8	2.9	3.3	5.5	4.5
Other Payments	0.0	0.0	0.0	0.0	0.1	-	-	-	-	-	-
MAJOR AGGREGATES											
Mid-Year Population ('000s of Persons)	105.7	106.5	107.4	109.4	109.9	110.6	111.2	111.7	111.8	112.0	112.0
Exports of Goods (XG)	85.4	67.4	79.0	57.1	48.9	61.9	52.6	47.3	50.2	49.6	51.8
Exports of Goods and Services (XGS)	130.2	113.4	138.0	119.5	112.3	136.3	149.2	146.7	157.4	175.4	178.0
GDP at Market Prices	198.2	212.5	233.2	238.8	243.3	263.9	278.5	293.8	317.3	329.8	342.0
Central Govt. Current Revenue (CGCR)	56.4	59.2	61.6	65.1	68.6	71.5	80.3	83.1	89.5	94.8	96.9
International Reserves (IR)	54.2	47.8	49.7	45.3	53.1	42.6	39.1	48.5	66.5	79.8	103.8
DEBT INDICATORS (%)											
Disbursed Debt Outstanding at e.o.p. per capita (\$US)	526.2	612.1	653.7	699.0	789.6	789.4	780.3	794.7	900.5	1429.2	1422.4
Disbursed Debt Outstanding at e.o.p./GDP	28.1	30.7	30.1	32.0	35.7	33.1	31.2	30.2	31.7	48.5	46.6
Disbursed Debt Outstanding at e.o.p./XG	65.1	96.7	88.8	133.9	177.6	140.9	165.1	187.5	200.4	322.7	307.8
Disbursed Debt Outstanding at e.o.p./XGS	42.7	57.5	50.9	64.0	77.3	64.0	58.2	60.5	64.0	91.3	89.5
Debt Service Payments/GDP	1.9	2.0	2.0	2.2	2.6	2.5	3.0	3.1	3.0	3.5	3.0
Debt Service Payments/XG	4.3	6.2	6.0	9.3	13.1	10.6	15.7	19.5	19.1	22.9	19.8
Debt Service Payments/XGS (Debt Service Ratio)	2.8	3.7	3.4	4.5	5.7	4.8	5.5	6.3	6.1	6.5	5.7
Debt Service Payments/CGCR	6.6	7.1	7.7	8.2	9.3	9.2	10.3	11.1	10.7	12.0	10.6
Debt Service Payments/Disbursements	46.2	37.8	51.7	47.8	50.4	212.0	134.6	76.1	48.1	17.7	134.3
Debt Service Payments/IR	6.8	8.8	9.5	11.8	12.0	15.4	21.1	19.0	14.4	14.3	9.9
Interest Payments/GDP	0.8	0.8	0.8	0.9	1.0	1.0	1.0	1.0	1.0	1.7	1.3
Interest Payments/XG	1.8	2.6	2.4	3.6	4.8	4.2	5.4	6.1	6.5	11.1	8.7
Interest Payments/XGS	1.2	1.6	1.4	1.7	2.1	1.9	1.9	2.0	2.1	3.1	2.5
Growth of the External Public Debt	...	17.2	7.7	8.9	13.5	0.6	-0.6	2.2	13.5	59.0	-0.5

ST VINCENT AND THE GRENADINES
TABLE 12.2: EXTERNAL PUBLIC DEBT BY CREDITORS: 1990-2000

(in millions of United States Dollars)											
ITEMS	1990	1991	1992	1993	1994	1995	1996	1997	1998	1999	2000
Official Creditors	55.6	65.2	70.2	75.1	80.8	81.5	81.6	86.7	97.3	99.2	98.9
Bilateral	10.7	13.3	16.4	21.5	25.6	26.5	29.9	31.8	34.9	36.4	35.4
Multilateral	44.9	51.9	53.8	53.6	55.2	54.9	51.6	54.9	62.4	62.8	63.5
Private Creditors	0.0	0.0	0.0	1.4	6.0	5.8	5.2	2.1	3.4	60.9	60.4
Commercial Banks	0.0	0.0	0.0	0.0	4.7	4.8	4.6	1.8	1.4	58.9	58.5
Suppliers Credit	0.0	0.0	0.0	1.4	1.2	1.0	0.6	0.3	2.0	2.0	1.9
Other Creditors	0.0	0.0	0.0	0.0	0.0	0.0	0.0	0.0	0.0	0.0	0.0
Total External Public Debt	55.6	65.2	70.2	76.5	86.8	87.3	86.8	88.7	100.7	160.1	159.3

ST VINCENT AND THE GRENADINES
TABEL 12.2b: EXTERNAL PUBLIC DEBT BY CREDITORS: 1990-2000 (Percentage Distribution)

ITEMS	1990	1991	1992	1993	1994	1995	1996	1997	1998	1999	2000
Official Creditors	100.0	100.0	100.0	98.2	93.1	93.4	94.0	97.7	96.6	62.0	62.1
Bilateral	19.2	20.4	23.4	28.1	29.5	30.4	34.5	35.8	34.7	22.7	22.2
Multilateral	80.8	79.6	76.6	70.1	63.6	63.0	59.5	61.9	61.9	39.2	39.9
Private Creditors	0.0	0.0	0.0	1.8	6.9	6.6	6.0	2.3	3.4	38.0	37.9
Commercial Banks	0.0	0.0	0.0	0.0	5.5	5.5	5.3	2.0	1.4	36.8	36.7
Suppliers Credit	0.0	0.0	0.0	1.8	1.4	1.1	0.7	0.3	2.0	1.2	1.2
Other Creditors	-	-	-	-	-	-	-	0.0	0.0	0.0	0.0
Total External Public Debt	100.0	100.0	100.0	100.0	100.0	100.0	100.0	100.0	100.0	100.0	100.0

FIGURE 12.1: ST VINCENT AND THE GRENADINES' DISBURSED DEBT OUTSTANDING AS A PERCENTAGE OF ITS XGS AND GDP: 1990-2000

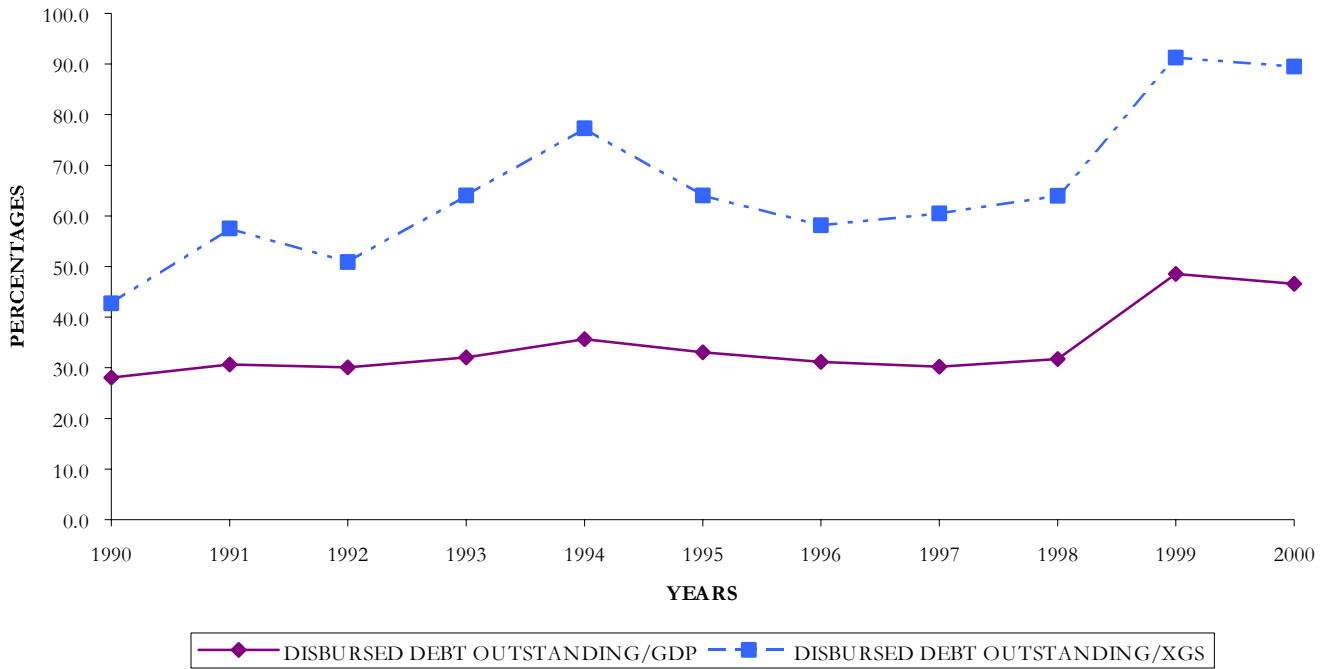
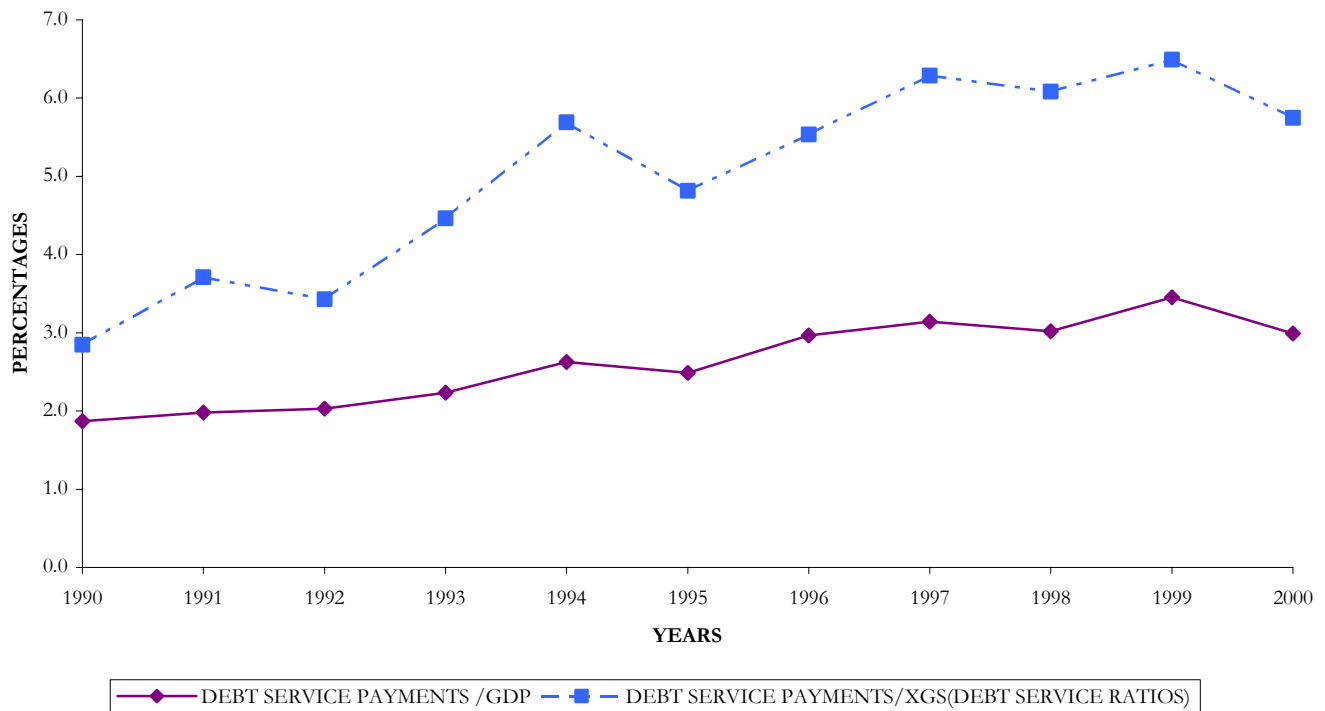


FIGURE 12.2 ST VINCENT AND THE GRENADINES' DEBT SERVICE PAYMENTS AS A PERCENTAGE OF ITS XGS AND GDP: 1990-2000



TRINIDAD AND TOBAGO
TABLE 13.1: SUMMARY OF EXTERNAL PUBLIC DEBT OPERATIONS: 1990-2000

(in millions of United States Dollars)

ITEMS	1990	1991	1992	1993	1994	1995	1996	1997	1998	1999	2000
Disbursed Debt at the Beginning of Period	2400.7	2520.5	2437.9	2215.0	2102.1	2063.5	1905.2	1875.8	1564.0	1471.1	1584.8
Net Borrowing	8.4	-131.8	-196.7	-163.5	-117.8	-169.7	2.7	-276.9	-115.9	118.6	113.3
Disbursements	251.8	133.1	252.0	311.1	324.4	108.2	253.9	73.6	58.7	294.3	383.6
Amortisation	243.4	264.9	448.7	474.6	442.2	277.9	251.2	350.5	174.6	175.7	270.3
Valuation Adjustment	111.4	49.2	-26.5	50.6	79.2	11.4	-32.1	-34.9	23.0	-4.9	-18.3
Disbursed Debt Outstanding at the end of Period (e.o.p)	2520.5	2437.9	2214.7	2102.1	2063.5	1905.2	1875.8	1564.0	1471.1	1584.8	1679.8
Debt Service Payments	456.7	478.1	620.1	617.9	586.4	433.2	393.1	474.5	291.1	272.7	378.1
Amortisation	243.4	264.9	448.7	474.6	442.2	277.9	251.2	350.5	174.6	175.7	270.3
Interest Payments	213.3	213.2	171.4	143.3	144.2	155.3	141.9	124.0	116.5	97.0	107.8
MAJOR AGGREGATES											
Mid-Year Population ('000s of Persons)	1215.2	1225.1	1239.9	1246.9	1249.7	1260.0	1269.1	1270.6	1282.6	1285.7	1293.8
Exports of Goods (XG)	2081.0	1986.0	1869.6	1662.2	1971.9	2477.4	2505.8	2542.3	2264.6	2815.8	4290.3
Exports of Goods and Services (XGS)	2418.0	2390.4	2321.7	2016.0	2300.5	2893.4	2967.9	3088.9	2938.3	3419.0	4844.1
GDP at Market Prices	5068.1	5307.9	5439.4	4586.2	4933.5	5359.6	5616.6	5813.7	6316.8	6865.8	8100.0
Central Govt. Current Revenue (CGCR)	1320.9	1581.3	1419.0	1258.6	1279.1	1435.6	1596.6	1461.5	1541.1	1617.5	2071.1
International Reserves (IR)	120.5	-54.1	-87.3	71.9	259.3	293.5	506.7	681.6	761.9	924.1	1368.6
DEBT INDICATORS (%)											
Disbursed Debt Outstanding at e.o.p. per capita (\$US)	2074.2	1989.9	1786.2	1685.9	1651.1	1512.1	1478.1	1230.9	1147.0	1232.6	1298.3
Disbursed Debt Outstanding at e.o.p./GDP	49.7	45.9	40.7	45.8	41.8	35.5	33.4	26.9	23.3	23.1	20.7
Disbursed Debt Outstanding at e.o.p./XG	121.1	122.8	118.5	126.5	104.6	76.9	74.9	61.5	65.0	56.3	39.2
Disbursed Debt Outstanding at e.o.p./XGS	104.2	102.0	95.4	104.3	89.7	65.8	63.2	50.6	50.1	46.4	34.7
Debt Service Payments/GDP	9.0	9.0	11.4	13.5	11.9	8.1	7.0	8.2	4.6	4.0	4.7
Debt Service Payments/XG	21.9	24.1	33.2	37.2	29.7	17.5	15.7	18.7	12.9	9.7	8.8
Debt Service Payments/XGS (Debt Service Ratio)	18.9	20.0	26.7	30.6	25.5	15.0	13.2	15.4	9.9	8.0	7.8
Debt Service Payments/CGCR	34.6	30.2	43.7	49.1	45.8	30.2	24.6	32.5	18.9	16.9	18.3
Debt Service Payments/Disbursements	181.4	359.2	246.1	198.6	180.8	400.4	154.8	644.7	495.9	92.7	98.6
Debt Service Payments/IR	379.0	--	--	859.4	226.1	147.6	77.6	69.6	38.2	29.5	27.6
Interest Payments/GDP	4.2	4.0	3.2	3.1	2.9	2.9	2.5	2.1	1.8	1.4	1.3
Interest Payments/XG	10.2	10.7	9.2	8.6	7.3	6.3	5.7	4.9	5.1	3.4	2.5
Interest Payments/XGS	8.8	8.9	7.4	7.1	6.3	5.4	4.8	4.0	4.0	2.8	2.2
Growth of the External Public Debt	...	-3.3	-9.2	-5.1	-1.8	-7.7	-1.5	-16.6	-5.9	7.7	6.0

Note: Disbursed Debt outstanding for 1992 at End of Period is not equal to Disbursed Debt, Beginning of Period for 1993. This due to rounding.

TRINIDAD AND TOBAGO
TABLE 13.2: EXTERNAL PUBLIC DEBT BY CREDITORS: 1990-2000

(in millions of United States Dollars)											
ITEMS	1990	1991	1992	1993	1994	1995	1996	1997	1998	1999	2000
Official Creditors	973.3	1048.3	985.0	918.5	939.0	935.1	893.8	816.1	772.8	718.3	655.5
Bilateral	501.1	486.4	464.9	445.4	443.6	385.3	282.7	194.1	139.1	77.4	44.6
Multilateral	472.2	561.9	520.1	473.1	495.4	549.8	611.1	622.0	633.7	640.9	610.9
Private Creditors	1547.2	1389.6	1229.7	1183.6	1124.5	970.1	982.0	748.0	698.3	866.5	1024.3
Commercial Banks	821.4	729.4	664.5	615.3	520.7	417.1	455.6	394.0	350.2	299.6	100.5
Bondholders	444.6	411.6	352.8	392.6	472.6	472.2	477.1	325.1	325.6	554.1	922.1
Lessors	228.5	224.5	209.7	173.5	129.4	79.0	47.6	27.2	20.8	11.1	0.0
Others	52.7	24.1	2.7	2.2	1.8	1.8	1.7	1.7	1.7	1.7	1.7
Total External Public Debt	2520.5	2437.9	2214.7	2102.1	2063.5	1905.2	1875.8	1564.1	1471.1	1584.8	1679.8

TRINIDAD AND TOBAGO
TABEL 13.2b: EXTERNAL PUBLIC DEBT BY CREDITORS: 1990-2000 (Percentage Distribution)

ITEMS	1990	1991	1992	1993	1994	1995	1996	1997	1998	1999	2000
Official Creditors	38.6	43.0	44.5	43.7	45.5	49.1	47.6	52.2	52.5	45.3	39.0
Bilateral	19.9	20.0	21.0	21.2	21.5	20.2	15.1	12.4	9.5	4.9	2.7
Multilateral	18.7	23.0	23.5	22.5	24.0	28.9	32.6	39.8	43.1	40.4	36.4
Private Creditors	61.4	57.0	55.5	56.3	54.5	50.9	52.4	47.8	47.5	54.7	61.0
Commercial Banks	32.6	29.9	30.0	29.3	25.2	21.9	24.3	25.2	23.8	18.9	6.0
Bondholders	17.6	16.9	15.9	18.7	22.9	24.8	25.4	20.8	22.1	35.0	54.9
Lessors	9.1	9.2	9.5	8.3	6.3	4.1	2.5	1.7	1.4	0.7	0.0
Others	2.1	1.0	0.1	0.1	0.1	0.1	0.1	0.1	0.1	0.1	0.1
Total External Public Debt	100.0	100.0	100.0	100.0	100.0	100.0	100.0	100.0	100.0	100.0	100.0

FIGURE 13.1: TRINIDAD AND TOBAGO'S DISBURSED DEBT OUTSTANDING AS A PERCENTAGE OF ITS XGS AND GDP: 1990-2000

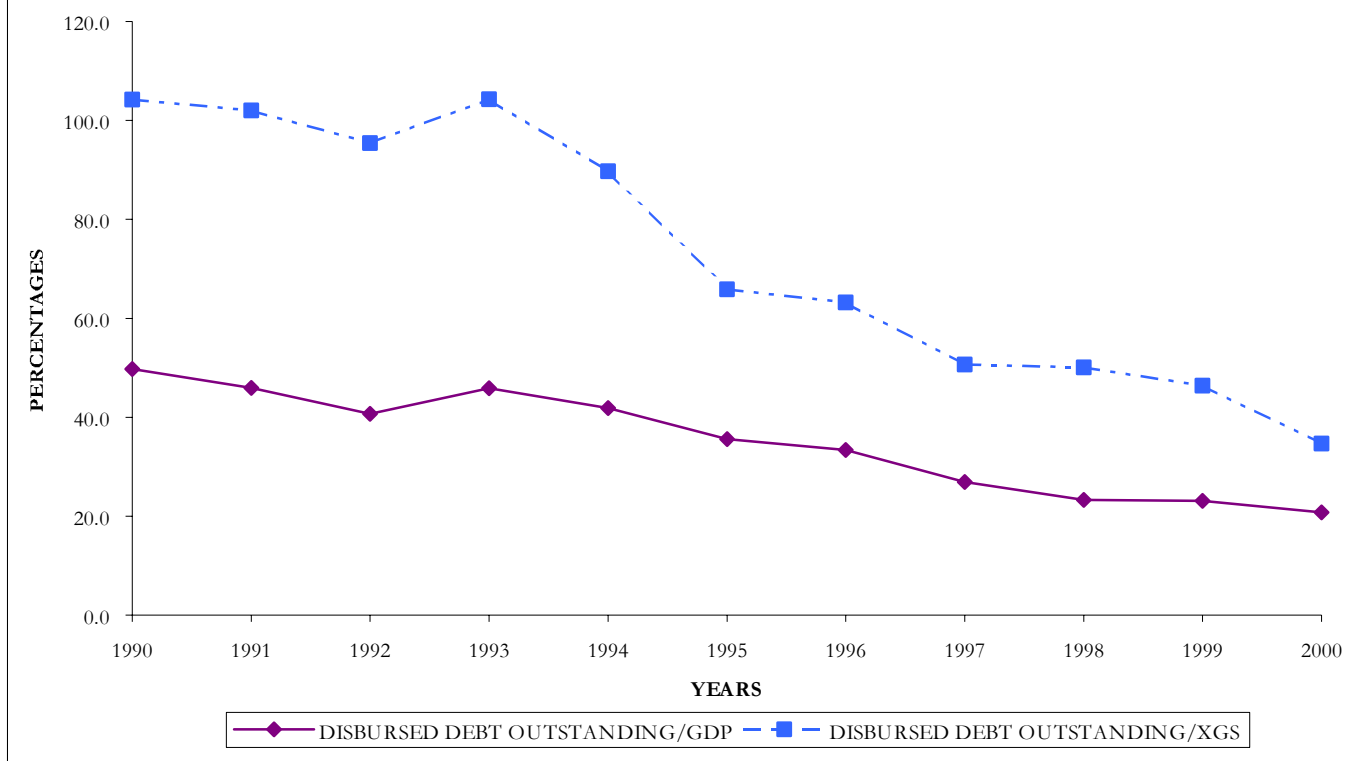


FIGURE 13.2: TRINIDAD AND TOBAGO'S DEBT SERVICE PAYMENTS AS A PERCENTAGE OF ITS XGS AND GDP: 1990-2000

